

REPUBLIC OF THE PHILIPPINES
DEPARTMENT OF PUBLIC WORKS AND HIGHWAYS
REGION III
BATAAN 1ST DISTRICT ENGINEERING OFFICE
OFFICE OF THE DISTRICT ENGINEER
ROMAN EXPRESSWAY, MULAWIN ORANI, BATAAN


C.Y 2020 PROJECT
DETAILED ENGINEERING DESIGN PLAN FOR
CONSTRUCTION OF FOUR (4) STOREY - SIXTEEN (16) CLASSROOM SCHOOL BUILDING
NAGBALAYONG NATIONAL HIGH SCHOOL
MORONG, BATAAN.

SUBMITTED:



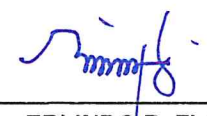
CELIA M. RAMOS
CHIEF, PLANNING AND DESIGN SECTION
DATE:

RECOMMENDED:



REGINA H. AGUSTIN
ASSISTANT DISTRICT ENGINEER
DATE:

APPROVED:



ERLINDO R. FLORES, JR.
DISTRICT ENGINEER
DATE:

CONCURRED:

ROMEO M. ALIP, PH.D., CESO V
SCHOOL DIVISION SUPERINTENDENT
DATE:

DISTRICT/CITY/MUNICIPALITY

LAND USE AND ZONING

LINE AND GRADE

ARCHITECTURAL

STRUCTURAL

PLUMBING

ELECTRICAL

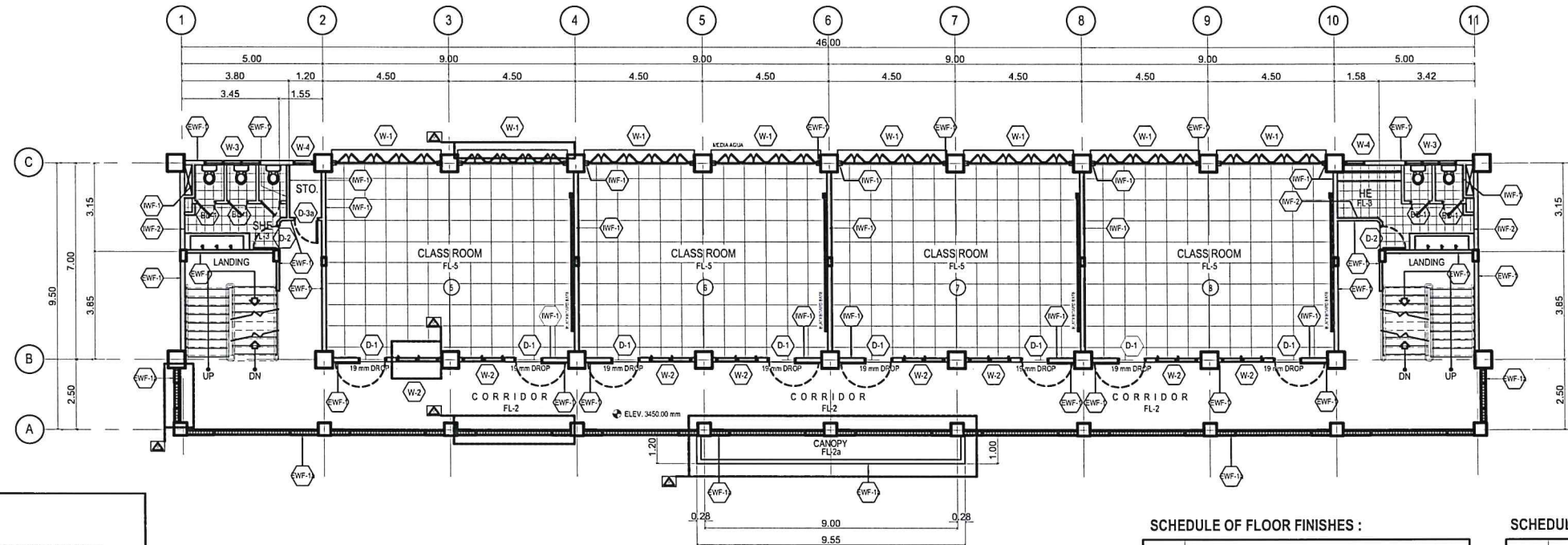
MECHANICAL



PERSPECTIVE
SCALE NTS.

ARCHITECTURAL		STRUCTURAL	PLUMBING	ELECTRICAL	MECHANICAL		LINE AND GRADE	
A-1	PERSPECTIVE, TABLE OF CONTENTS	A-13R TYPICAL DETAIL OF CORRIDOR RAILING (FRONT RAILING). TYPICAL DETAIL OF CORRIDOR RAILING (SIDE RAILING). TYPICAL DETAIL SECTION OF STAIR. TYPICAL DETAIL SECTION OF STAIR STEPS. DETAIL SECTION OF CONCRETE BENCH	S-1 GENERAL CONSTRUCTION NOTES, EC-1a DESIGN CRITERIA	OPTION - 1 (WITH REGULAR CLASSROOM LAYOUT)	E-1 GROUND FLOOR LIGHTING LAYOUT (OPTION - 1) SECOND FLOOR LIGHTING LAYOUT	OPTION - 1 (WITH REGULAR CLASSROOM LAYOUT)	OPTION - 4 (WITH SCIENCE LABORATORY ROOM)	ARCHITECTURAL
A-2	GROUND FLOOR PLAN (OPTION - 1), SECOND FLOOR PLAN, SCHEDULE OF FLOOR FINISHES, SCHEDULE OF WALL FINISHES	A-14 SCHEDULE OF DOORS AND WINDOWS	S-2 GENERAL CONSTRUCTION NOTES	P-1 GROUND FLOOR PLAN AND SECOND FLOOR PLAN (SEWER AND DRAINAGE LINE LAYOUT)	E-2 THIRD FLOOR LIGHTING LAYOUT FOURTH FLOOR LIGHTING LAYOUT	M-1 SCHEDULE OF EQUIPMENTS, GROUND FLOOR VENTILATION AND CEILING FAN LAYOUT, TYPICAL SECOND AND THIRD FLOOR VENTILATION AND CEILING FAN LAYOUT	M-7 SCHEDULE OF EQUIPMENTS GROUND FLOOR AIR CONDITIONING AND VENTILATION LAYOUT TYPICAL SECOND AND THIRD FLOOR VENTILATION AND CEILING FAN LAYOUT	
A-2a	GROUND FLOOR PLAN (OPTION - 2), GROUND FLOOR PLAN (OPTION - 3), SCHEDULE OF FLOOR FINISHES, SCHEDULE OF WALL FINISHES	A-15 DETAIL ELEVATION AND SECTION OF CORRIDOR RAILING (TYP. @ SECOND AND THIRD FLOOR)	S-3 FOUNDATION PLAN SECOND FLOOR FRAMING PLAN	P-2 THIRD FLOOR PLAN AND DECK ROOF FLOOR PLAN (SEWER AND DRAINAGE LINE LAYOUT)	E-3 ROOF DECK POWER LAYOUT GROUND FLOOR POWER LAYOUT (OPTION - 1)	M-2 GENERAL NOTES, LEGENDS, FOURTH FLOOR VENTILATION AND CEILING FAN LAYOUT, MISCELLANEOUS DETAILS	M-8 GENERAL NOTES, LEGENDS, FOURTH FLOOR VENTILATION AND CEILING FAN LAYOUT, MISCELLANEOUS DETAILS	
A-2b	GROUND FLOOR PLAN (OPTION - 4), THIRD FLOOR PLAN, SCHEDULE OF FLOOR FINISHES, SCHEDULE OF WALL FINISHES	A-16 DETAIL OF TOILETS	S-4 THIRD FLOOR FRAMING PLAN FOURTH FLOOR FRAMING PLAN	P-3 GROUND FLOOR PLAN (WATER AND FIRE LINE LAYOUT), ROOF PLAN (DRAINAGE LAYOUT)	E-4 SECOND FLOOR POWER LAYOUT THIRD FLOOR POWER LAYOUT	WP-1 SCHEDULE OF EQUIPMENTS, ISOMETRIC DIAGRAM OF WATER PUMPING SYSTEM, MISCELLANEOUS DETAILS	FP-7 FOURTH FLOOR FE AND FHC LAYOUT SCHEDULE OF EQUIPMENT MISCELLANEOUS DETAILS	
A-3	FOURTH FLOOR PLAN, DECK ROOF FLOOR PLAN, SCHEDULE OF FLOOR FINISHES, SCHEDULE OF WALL FINISHES	A-17 DETAIL OF TOILETS	S-5 DETAIL PLAN AND ELEVATION OF CF-1, F-1 (EXPOSURE - B) DETAIL PLAN AND ELEVATION OF CF-1, F-1 (EXPOSURE - D) SCHEDULE OF FOOTING TIE BEAM (EXPOSURE - B) SCHEDULE OF FOOTING TIE BEAM (EXPOSURE - D)	P-4 SECOND FLOOR PLAN, THIRD FLOOR PLAN AND ROOF DECK FLOOR PLAN (WATER AND FIRE LINE LAYOUT)	E-5 FOURTH FLOOR POWER LAYOUT ROOF DECK POWER LAYOUT	FP-1 GENERAL NOTES, LEGEND, GROUND FLOOR FE AND FHC LAYOUT, TYPICAL SECOND AND THIRD FLOOR FE AND FHC LAYOUT	FP-8 FOURTH FLOOR FE AND FHC LAYOUT SCHEDULE OF EQUIPMENT MISCELLANEOUS DETAILS	STRUCTURAL
A-4	ROOF PLAN, FRONT ELEVATION, SCHEDULE OF WALL FINISHES	A-18 DETAIL OF BLACKBOARD DETAIL OF CHALK DUST BOX DETAIL SECTION (CHALK DUST BOX)	S-6 WALL TO TIE-BEAM CONNECTION DETAILS DETAIL OF WALL FOOTING -1 DETAIL SECTION OF HAN WASHING COUNTER DETAIL LAVATORY (HAND WASH) DETAIL SECTION OF CONCRETE SEATING DETAIL SECTION OF CONCRETE CANOPY	P-5 ISOMETRIC DIAGRAM (SEWER LINE LAYOUT) PLUMBING NOTES	E-6 GENERAL NOTES ELECTRICAL SYMBOLS SCHEDULE OF LOADS SCHEDULE OF LIGHTING FIXTURES AND LAMPS ELECTRICAL RISER DIAGRAM	FP-2 FOURTH FLOOR FE AND FHC LAYOUT, SCHEDULE OF EQUIPMENT, MISCELLANEOUS DETAILS		
A-5	REAR ELEVATION, LEFT SIDE ELEVATION, RIGHT SIDE ELEVATION, SCHEDULE OF WALL FINISHES		S-7 REF. DETAIL ELEVATION OF COLUMNS SCHEDULE OF COLUMN (EXPOSURE -D & V=340) SCHEDULE OF COLUMN (EXPOSURE -B & V=270) DETAIL SECTION OF STAIR ON FILL	P-6 ISOMETRIC DIAGRAM (DRAINAGE LINE LAYOUT) PLUMBING NOTES	E-7 GROUND FLOOR POWER LAYOUT (WITH HOME ECONOMICS ROOM - OPTION - 2) GROUND FLOOR LIGHTING LAYOUT (WITH HOME ECONOMICS ROOM - OPTION - 2)	OPTION - 2 (WITH HOME ECONOMICS ROOM)		
A-6	CROSS SECTION, LONGITUDINAL SECTION, SCHEDULE OF WALL FINISHES		S-8 SCHEDULE OF BEAMS AND GIRDERS SCHEDULE OF SLABS TYPICAL GIRDER/BEAM DETAILS	P-7 ISOMETRIC DIAGRAM (WATER LINE LAYOUT), PLUMBING LEGEND	E-8 GENERAL NOTES ELECTRICAL SYMBOLS SCHEDULE OF LOADS SCHEDULE OF LIGHTING FIXTURES AND LAMPS ELECTRICAL RISER DIAGRAM	M-3 SCHEDULE OF EQUIPMENTS, GROUND FLOOR AIR-CONDITIONING AND VENTILATION LAYOUT, TYPICAL SECOND & THIRD FLOOR VENTILATION AND CEILING FAN LAYOUT		
A-7	GROUND FLOOR REFLECTED CEILING PLAN (OPTION 2, 3 & 4) SCHEDULE OF CEILING FINISHES, NOTES, LEGEND		S-9 SCHEDULE OF BEAMS AND GIRDERS (EXPOSURE - B) DETAIL SECTION OF R.C. RAMP	P-8 DETAIL OF CATCH BASIN DETAIL OF SEPTIC VAULT SCHEDULE OF SLAB REINFORCEMENT	E-9 GROUND FLOOR LIGHTING LAYOUT (WITH COMPUTER LABORATORY ROOM - OPTION - 3) GROUND FLOOR POWER LAYOUT (WITH COMPUTER LABORATORY ROOM - OPTION - 3)	M-4 GENERAL NOTES, LEGENDS, FOURTH FLOOR VENTILATION AND CEILING FAN LAYOUT, MISCELLANEOUS DETAILS		
A-8	TYPICAN 2ND AND 3RD FLR. REFLECTED CEIL. PLAN, FOURTH FLOOR REFLECTED CEILING PLAN SCHEDULE OF CEILING FINISHES, DETAIL OF CEILING AIR-VENT		S-10 END WALL DETAIL ROOF FRAMING PLAN DETAIL DETAIL OF R.C. GUTTER DETAIL OF PLANTED COLUMN (PC-1)	P-9 DETAIL OF CISTERN TANK	E-10 GENERAL NOTES ELECTRICAL SYMBOLS SCHEDULE OF LOADS SCHEDULE OF LIGHTING FIXTURES AND LAMPS ELECTRICAL RISER DIAGRAM	WP-1 SCHEDULE OF EQUIPMENTS, ISOMETRIC DIAGRAM OF WATER PUMPING SYSTEM, MISCELLANEOUS DETAILS		
A-9	DETAIL BAY SECTIONS DETAIL SECTION (R.C. GUTTER) DETAIL SECTION OF CORRIDOR RAILING (TYP. @ SECOND TO FOURTH FLOOR)		S-11 DETAIL ELEVATION OF TRUSS 1 REFERENCE WELD SCHEDULE OF TRUSS MEMBERS AND WELDS (EXPOSURE - B) SCHEDULE OF TRUSS MEMBERS AND WELDS (EXPOSURE - D)	P-1a GROUND FLOOR PLAN (SEWER AND DRAINAGE LINE LAYOUT) GROUND FLOOR PLAN (WATER LINE LAYOUT)	E-11 GROUND FLOOR LIGHTING LAYOUT (WITH COMPUTER LABORATORY ROOM - OPTION - 4) SECOND FLOOR POWER LAYOUT (WITH SCIENCE LABORATORY ROOM - OPTION - 4)	FP-3 FOURTH FLOOR FE AND FHC LAYOUT SCHEDULE OF EQUIPMENT MISCELLANEOUS DETAILS		
A-10	DETAIL OF MAIN ENTRANCE TYPICAL DETAIL OF SERVICE ENTRANCE SPOT DETAIL SECTION OF CORRIDOR RAILING (AT GROUND FLOOR) SPOT DETAIL SECTION OF STAIR STEP (MAIN/ SERVICE ENTRANCE)		S-12 DETAIL SECTIONS, CONNECTIONS & ANCHORAGES OF TRUSS MEMBERS	P-1b ISOMETRIC DIAGRAM (WATER LINE LAYOUT)	E-12 GENERAL NOTES ELECTRICAL SYMBOLS SCHEDULE OF LOADS SCHEDULE OF LIGHTING FIXTURES AND LAMPS ELECTRICAL RISER DIAGRAM	FP-4 FOURTH FLOOR FE AND FHC LAYOUT, SCHEDULE OF EQUIPMENT, MISCELLANEOUS DETAILS		
A-11	DETAIL OF RAMP DETAIL SECTIONS OF RAMP DETAIL SECTION OF RAMP RAILING TYPICAL DETAIL PLAN OF HAND WASHING COUNTER TYP. DETAIL SECTION OF HAND WASHING COUNTER		S-13 DETAIL ELEVATION OF TRUSS - 2 DETAIL CONNECTION AND SPACING OF J-BOLT ISOMETRIC VIEW OF CONNECTION OF ROOFING TO PURLINS	P-1c ISOMETRIC DIAGRAM (SEWER LINE LAYOUT) OPTION - 3 (WITH COMPUTER LABORATORY ROOM) ADAPTABLE TO OPTION - 1		FP-5 GROUND FLOOR FE AND FHC LAYOUT TYPICAL SECOND AND THIRD FLOOR FE AND FHC LAYOUT		
A-12	TYPICAL DETAIL OF STAIR, TYPICAL DETAIL OF STAIR FROM FOURTH FLOOR TO DECK ROOF FLOOR LEVEL		S-14 DETAIL ELEVATION OF STAIR DETAIL SECTION OF STAIR DETAIL PLAN OF LINTEL BEAM DETAIL PLAN OF STAIRWAY COLUMN	OPTION - 4 (WITH SCIENCE LABORATORY ROOM)		M-5 SCHEDULE OF EQUIPMENT GROUND FLOOR AIR-CONDITIONING AND VENTILATION LAYOUT TYPICAL SECOND AND THIRD FLOOR VENTILATION AND CEILING FAN LAYOUT		
A-13	TYPICAL DETAIL SECTION OF STAIR TYPICAL DETAIL SECTION OF STAIR (TO DECK ROOF) DETAIL SECTION OF STAIR LANDING DETAIL SECTION OF STAIR LANDING (TO DECK ROOF) TYPICAL DETAIL SECTION OF STAIR STEPS TYPICAL DETAIL SECTION OF STAIR STEPS (TO DECK ROOF) SPOT DETAIL (NON-SKID NOSING STRIP) SPOT DETAIL (TYPICAL HANDRAIL)		S-15 FRAMING PLAN OF SATIR @ FOURTH FLOOR LEVEL FRAMING PLAN OF STAIR @ ROOF DECK LEVEL STAIR DETAIL FROM 4TH FLOOR TO ROOF DECK DETAIL PLAN OF LINTEL BEAM (LB-1) DETAIL PLAN OF MEDIA AGUA	P-1d GROUND FLOOR PLAN (SEWER AND DRAINAGE LINE LAYOUT) GROUND FLOOR PLAN (WATER LINE LAYOUT)		M-6 GENERAL NOTES, LEGEND, FOURTH FLOOR VENTILATION AND CEILING FAN LAYOUT MISCLANEOUS DETAILS		
								ELECTRICAL
								MECHANICAL

	REPUBLIC OF THE PHILIPPINES DEPARTMENT OF PUBLIC WORKS AND HIGHWAYS REGION III BATAAN 1ST DISTRICT ENGINEERING OFFICE OFFICE OF THE DISTRICT ENGINEER ROMAN EXPRESSWAY, MULAWIN ORANI, BATAAN	PROJECT/LOCATION : CONSTRUCTION OF FOUR (4) STOREY - SIXTEEN (16) CLASSROOM SCHOOL BUILDING NAGBALAYONG NATIONAL HIGH SCHOOL MORONG, BATAAN.	SHEET CONTENTS : AS SHOWN	DRAFTED : ROLANDO P. SOLIMAN ARCHITECT II PREPARED : DENNIS L. GONZALES ENGINEER II	REVIEWED : MARY ANN B. AMIO ENGINEER II DATE:	SUBMITTED : CELIA M. RAMOS CHIEF, PLANNING AND DESIGN SECTION DATE:	RECOMMENDED : REGINA H. AGUSTIN ASSISTANT DISTRICT ENGINEER DATE:	APPROVED : ERLINDO R. FLORES, JR. DISTRICT ENGINEER DATE:	CONCURRED : ROMEO M. ALIP, PH. D., CESO V SCHOOL DIVISION SUPERINTENDENT DATE:	SET NO. A 1	SHEET NO. 65



LEGEND:

R REVISION OF DRAWING DETAILS (1/23/2018)

- REVISION OF CORRIDOR RAILING AT GROUND FLOOR (FROM 150 mm THK. CHB RAILING TO REINFORCED CONCRETE BENCH) ADAPTING THE PROPOSED DEP'D DESIGN.
- REVISION OF CORRIDOR RAILING AT SECOND TO FOURTH FLOOR ADAPTING THE PROPOSED DEP'D DESIGN.
- REVISION OF JALOUSIE WINDOW (W-2) - FROM THREE (3) PANEL WINDOWS REDUCED INTO TWO (2) PANEL WINDOWS.
- ADDITIONAL MEDIA AGUA (REINFORCED CONCRETE SUN BREAKER) ABOVE WINDOW (W-1) AT REAR.
- ADDITIONAL CANOPY (REINFORCED CONCRETE) ALONG MAIN ENTRANCE, AS RECOMMENDED ON THE PROPOSED DEP'D DESIGN.
- REVISION OF TOILET'S WALL & FLOOR FINISHES
 - (W-2) FROM 200 X 200 mm VIT. GLAZED WALL TILES FINISH TO 300 X 300 mm VIT. GLAZED TILES WALL FINISH
 - (FL-3) FROM 200 X 200 mm VITRIFIED UNGLAZED TILES FLOOR FINISH TO 300 X 300 mm VITRIFIED UNGLAZED TILES FLOOR FINISH

NOTE:

- FOR SCHOOL BUILDING SITE LOCATED NEAR SEA BOARDS OR COASTAL AREAS PRONE TO CORROSION ON G.I. ROOFING, CORRUGATED ASPHALT ROOFING SHEETS (3.0 mm THK. - BITUMINOUS - CELLULOSE FIBRES CAN BE USED AS ALTERNATE ROOFING MATERIALS).
- FOR COLUMNS AND BEAMS SIZES REFER TO STRUCTURAL SHOP DRAWINGS.

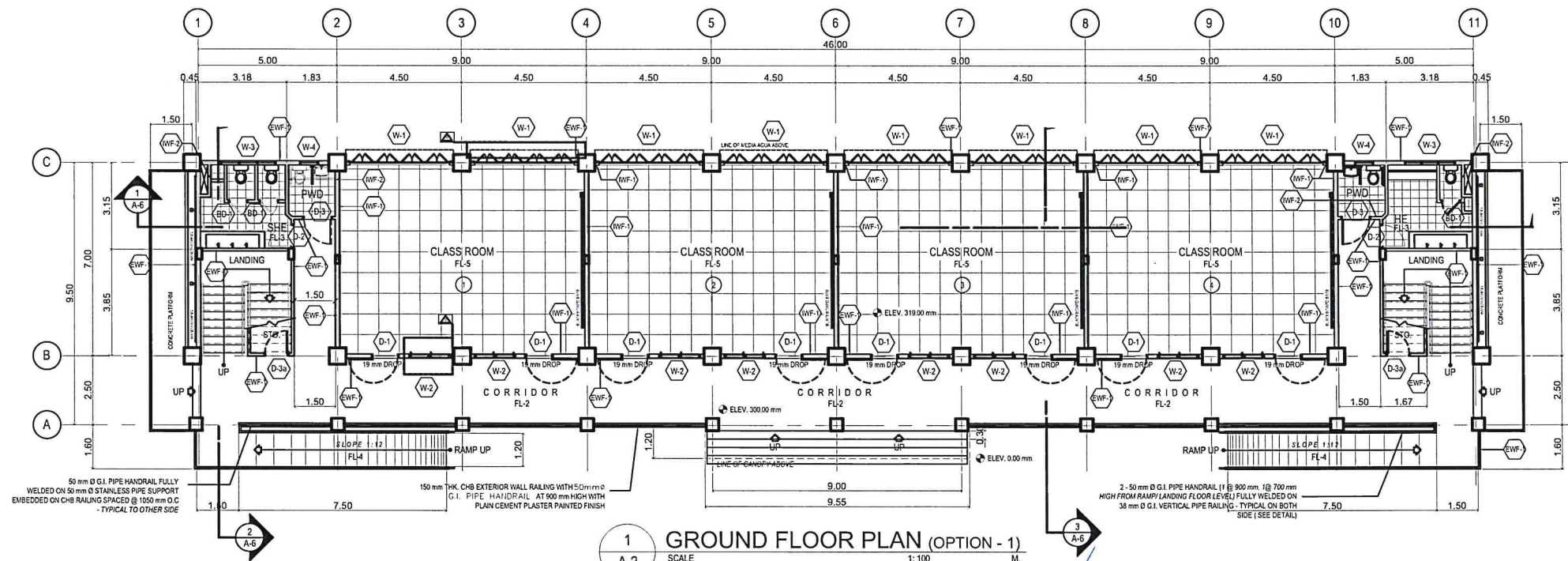
2 TYPICAL SECOND & THIRD FLOOR PLAN
SCALE 1:100 M.

SCHEDULE OF FLOOR FINISHES :

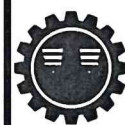
MARK	FLOOR DESCRIPTION
FL - 1	PLAIN CEMENT FLOOR FINISH WITH FLOOR HARDENER (PROVIDE 6mm GROOVES @ 1000 mm O.C. BOTH WAYS)
FL - 2	PLAIN CEMENT FLOOR FINISH WITH FLOOR HARDENER FOR FL-2a - PLAIN CEMENT FLOOR FINISH WITH INTEGRAL MEMBRANE WATER PROOFING
FL - 3	300 X 300 mm VITRIFIED UNGLAZED TILES FLOOR FINISH
FL - 4	NON - SKID CEMENT FLOOR FINISH WITH 6mm GROOVE LINES
FL - 5	600 X 600 mm VITRIFIED GLAZED TILES FLOOR FINISH

SCHEDULE OF WALL FINISHES :

MARK	WALL DESCRIPTION
EW - 1	150 mm THK. CHB EXTERIOR WALL WITH PLAIN CEMENT PLASTER PAINTED FINISH (SUBMIT COLOR SCHEMES FOR APPROVAL)
EW - 1a	150 mm THK. CHB EXTERIOR WALL RAILING WITH PLAIN CEMENT PLASTER PAINTED FINISH (SUBMIT COLOR SCHEMES FOR APPROVAL)
EW - 2	100 mm THK. R.C. PARAPET WITH PLAIN CEMENT PLASTER PAINTED FINISH (SUBMIT COLOR SCHEMES FOR APPROVAL)
IWF - 1	100 mm THK./150 mm THK. CHB INTERIOR WALL WITH PLAIN CEMENT PLASTER PAINTED FINISH (SUBMIT COLOR SCHEMES FOR APPROVAL)
IWF - 2	300 X 300 mm VITRIFIED GLAZED TILE WALL FINISH (SIZE & OR COLOR FOR APPROVAL BY THE END-USER) - TYPICAL ON ALL TOILET WALLS



1 GROUND FLOOR PLAN (OPTION - 1)
SCALE 1:100 M.



REPUBLIC OF THE PHILIPPINES
DEPARTMENT OF PUBLIC WORKS AND HIGHWAYS
REGION III
BATAAN 1ST DISTRICT ENGINEERING OFFICE
OFFICE OF THE DISTRICT ENGINEER
ROMAN EXPRESSWAY, MULAWAN ORANI, BATAAN

PROJECT/LOCATION :
CONSTRUCTION OF FOUR (4) STOREY -
SIXTEEN (16) CLASSROOM SCHOOL BUILDING
NAGBALAYONG NATIONAL HIGH SCHOOL
MORONG, BATAAN.

SHEET CONTENTS :
AS SHOWN

DRAFTED :
ROLANDO P. SOLIMAN
ARCHITECT II
PREPARED :
DENNIS L. GONZALES
ENGINEER II

REVIEWED :
MARY ANN B. AMIO
ENGINEER II
DATE:

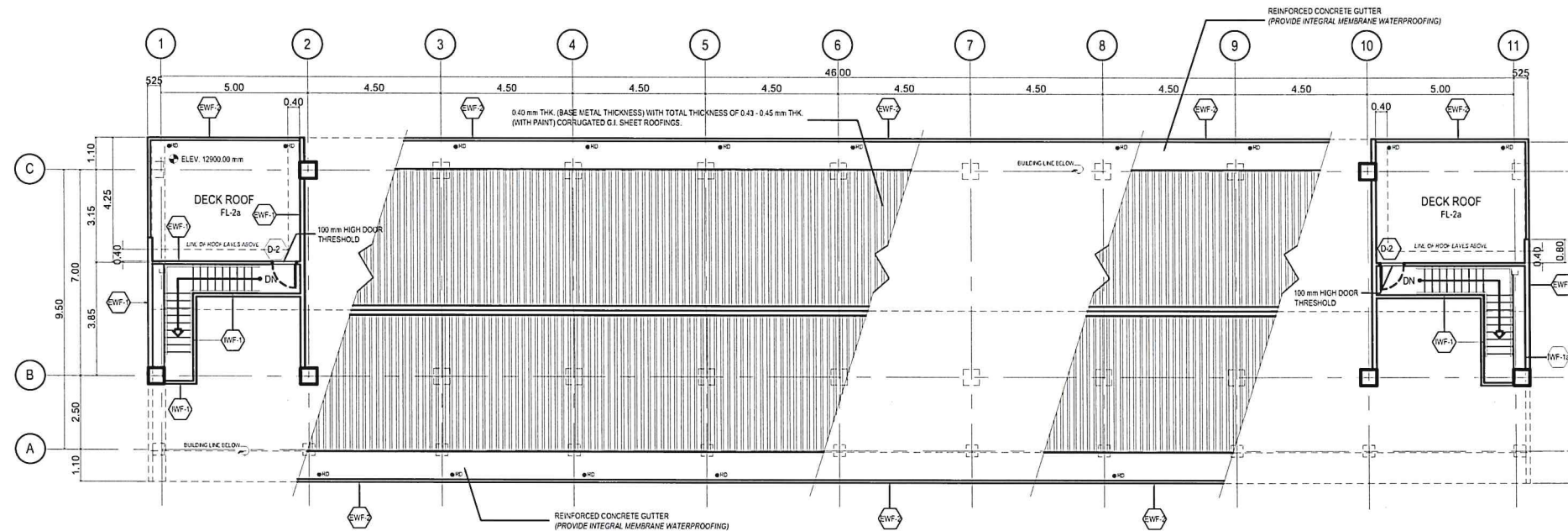
SUBMITTED :
CELIA M. RAMOS
CHIEF, PLANNING AND DESIGN SECTION
DATE:

RECOMMENDED :
REGINA H. AGUSTIN
ASSISTANT DISTRICT ENGINEER
DATE:

APPROVED :
ERLINDO R. FLORES, JR.
DISTRICT ENGINEER
DATE:

CONCURRED :
ROMEO M. ALIP, PH. D., CESO V
SCHOOL DIVISION SUPERINTENDENT
DATE:

SET NO. A
SHEET NO. 2
65



LEGEND:



REVISION OF DRAWING DETAILS (1/23/2018)

- REVISION OF CORRIDOR RAILING AT SECOND TO FOURTH FLOOR ADAPTING THE PROPOSED DEP'D DESIGN
- REVISION OF JALOUSIE WINDOW (W-2) - FROM THREE (3) PANEL WINDOWS REDUCED INTO TWO (2) PANEL WINDOWS
- REVISION ON SCHEDULE OF WALL FINISHES (EWF-2, FROM 150 mm THK. CHB TO REINFORCED CONCRETE)
- REVISION OF TOILETS WALL & FLOOR FINISHES (IWF-2) FROM 200 X 200 mm VIT. GLAZED WALL TILES FINISH TO 300 X 300 mm VIT. GLAZED TILES WALL FINISH (FL-3) FROM 200 X 200 mm VITRIFIED UNGLAZED TILES FLOOR FINISH TO 300 X 300 mm VITRIFIED UNGLAZED TILES FLOOR FINISH

NOTE:

- FOR SCHOOL BUILDING SITE LOCATED NEAR SEA BOARDS OR COASTAL AREAS PRONE TO CORROSION ON G.I. ROOFING, CORRUGATED ASPHALT ROOFING SHEETS (3.0 mm THK. - BITUMINOUS - CELLULOSE FIBRES CAN BE USED AS ALTERNATE ROOFING MATERIALS).
- FOR COLUMNS AND BEAMS SIZES REFER TO STRUCTURAL SHOP DRAWINGS.

2
A-3

ROOF DECK FLOOR PLAN (SHOWING PARTIAL PLAN OF ROOF)

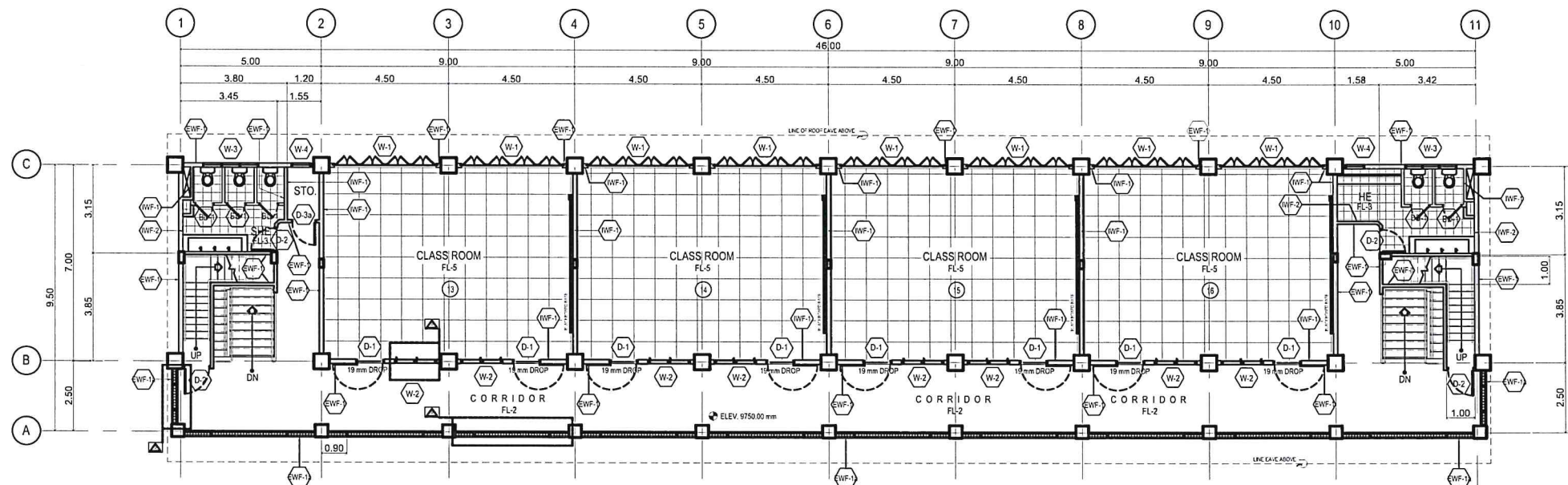
SCALE 1:100 M.

SCHEDULE OF FLOOR FINISHES :

MARK	FLOOR DESCRIPTION
FL - 1	PLAIN CEMENT FLOOR FINISH WITH FLOOR HARDENER (PROVIDE 6mm GROOVES @ 1000 mm O.C. BOTH WAYS)
FL - 2	PLAIN CEMENT FLOOR FINISH WITH FLOOR HARDENER FOR FL-2a - PLAIN CEMENT FLOOR FINISH WITH INTEGRAL MEMBRANE WATER PROOFING
FL - 3	300 X 300 mm VITRIFIED UNGLAZED TILES FLOOR FINISH
FL - 4	NON - SKID CEMENT FLOOR FINISH WITH 6mm GROOVE LINES
FL - 5	600 X 600 mm VITRIFIED GLAZED TILES FLOOR FINISH

SCHEDULE OF WALL FINISHES :

MARK	WALL DESCRIPTION
EWF - 1	150 mm THK. CHB EXTERIOR WALL WITH PLAIN CEMENT PLASTER PAINTED FINISH (SUBMIT COLOR SCHEMES FOR APPROVAL)
EWF - 1a	150 mm THK. CHB EXTERIOR WALL RAILING WITH PLAIN CEMENT PLASTER PAINTED FINISH (SUBMIT COLOR SCHEMES FOR APPROVAL)
EWF - 2	100 mm THK. R.C. PARAPET WITH PLAIN CEMENT PLASTER PAINTED FINISH (SUBMIT COLOR SCHEMES FOR APPROVAL)
IWF - 1	100 mm THK. / 150 mm THK. CHB INTERIOR WALL WITH PLAIN CEMENT PLASTER PAINTED FINISH (SUBMIT COLOR SCHEMES FOR APPROVAL)
IWF - 2	300 X 300 mm VITRIFIED GLAZED TILE WALL FINISH (SIZE & OR COLOR FOR APPROVAL BY THE END-USER) - TYPICAL ON ALL TOILET WALLS



1
A-3

FOURTH FLOOR PLAN

SCALE 1:100 M.



REPUBLIC OF THE PHILIPPINES
DEPARTMENT OF PUBLIC WORKS AND HIGHWAYS
REGION III
BATAAN 1ST DISTRICT ENGINEERING OFFICE
OFFICE OF THE DISTRICT ENGINEER
ROMAN EXPRESSWAY, MULAWIN ORANI, BATAAN

PROJECT/LOCATION :
CONSTRUCTION OF FOUR (4) STOREY -
SIXTEEN (16) CLASSROOM SCHOOL BUILDING
NAGBALAYONG NATIONAL HIGH SCHOOL
MORONG, BATAAN.

SHEET CONTENTS :
AS SHOWN

DRAFTED :
ROLANDO P. SOLIMAN
ARCHITECT II
PREPARED :
DENNIS L. GONZALES
ENGINEER II

REVIEWED :
MARY ANN B. AMIO
ENGINEER II
DATE:

SUBMITTED :
CELIA M. RAMOS
CHIEF, PLANNING AND DESIGN SECTION
DATE:

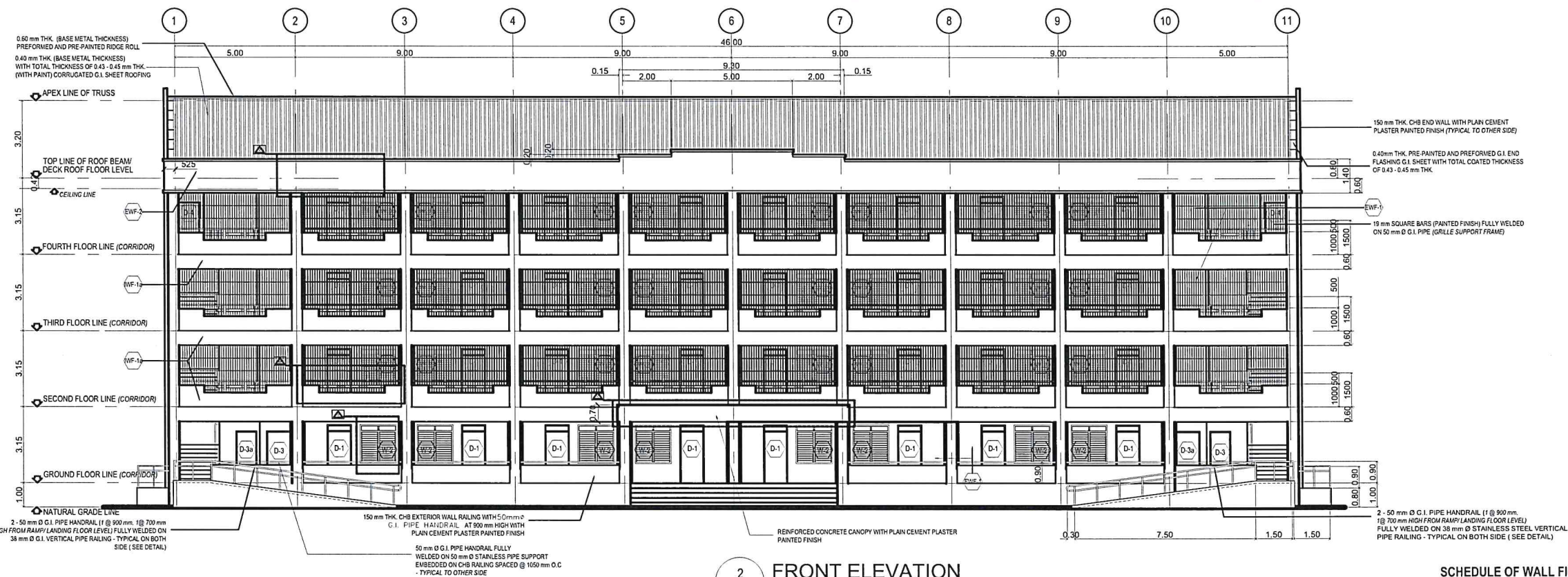
RECOMMENDED :
REGINA H. AGUSTIN
ASSISTANT DISTRICT ENGINEER
DATE:

APPROVED :
ERLINDO R. FLORES, JR.
DISTRICT ENGINEER
DATE:

CONCURRED :
ROMEO M. ALIP, PH. D., CESO V
SCHOOL DIVISION SUPERINTENDENT
DATE:

SET NO.
A
3

SHEET NO.
65



2 FRONT ELEVATION
A-4 SCALE 1:100 M.

LEGEND:



REVISION ON THE DRAWING DETAILS (1/23/2018)

- REVISION OF CORRIDOR RAILING AT GROUND FLOOR (FROM 150 mm THK. CHB RAILING TO REINFORCED CONCRETE BENCH) ADAPTING THE PROPOSED DEPED DESIGN.
- REVISION OF CORRIDOR RAILING AT SECOND TO FOURTH FLOOR ADAPTING THE PROPOSED DEPED DESIGN.
- REVISION OF JALOUSIE WINDOW (W-2) - FROM THREE (3) PANEL WINDOWS REDUCED INTO TWO (2) PANEL WINDOWS.

- REVISION OF PARAPET WALL (R.C. GUTTER) FROM 100 mm THK. CHB TO 100 mm THK. REINFORCED CONCRETE.
- ADDITIONAL CANOPY (REINFORCED CONCRETE) ALONG MAIN ENTRANCE, AS RECOMMENDED ON THE PROPOSED DEPED DESIGN.
- REVISION OF TOILET'S WALL & FLOOR FINISHES
 - (W-2) FROM 200 X 200 mm VIT. GLAZED WALL TILES FINISH TO 300 X 300 mm VIT. GLAZED TILES WALL FINISH
 - (FL-3) FROM 200 X 200 mm VITRIFIED UNGLAZED TILES FLOOR FINISH TO 300 X 300 mm VITRIFIED UNGLAZED TILES FLOOR FINISH

NOTE:

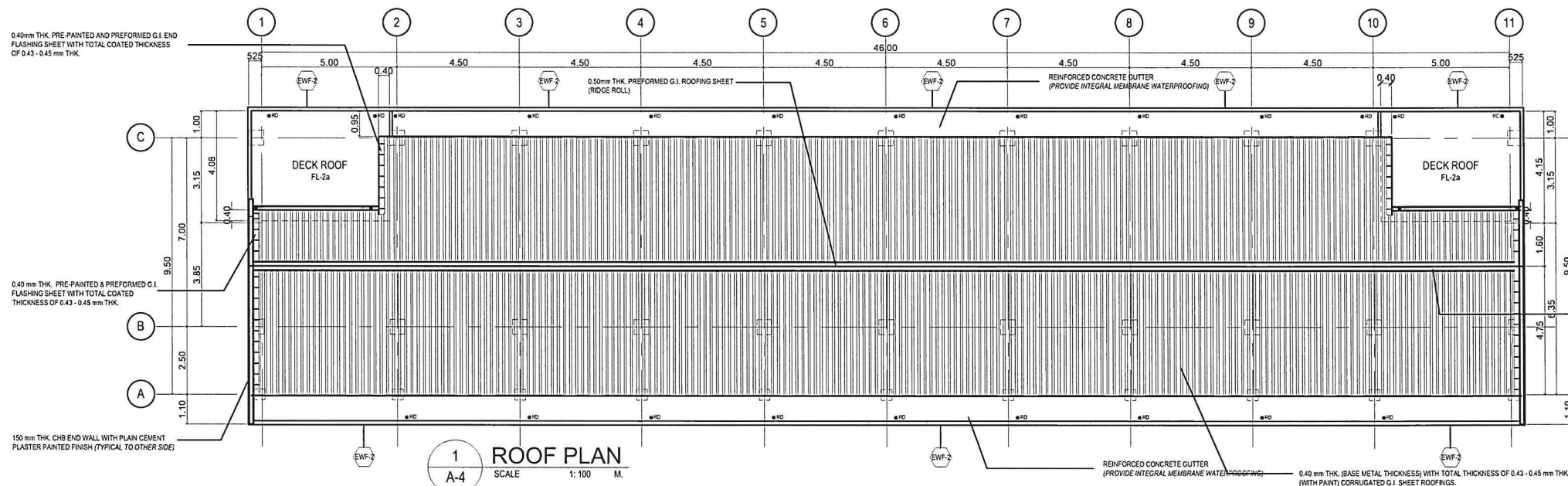
- FOR SCHOOL BUILDING SITE LOCATED NEAR SEA BOARDS OR COASTAL AREAS PRONE TO CORROSION ON G.I. ROOFING, CORRUGATED ASPHALT ROOFING SHEETS (3.0 mm THK. - BITUMINOUS - CELLULOSE FIBRES CAN BE USED AS ALTERNATE ROOFING MATERIALS).
- FOR COLUMNS AND BEAMS SIZES REFER TO STRUCTURAL SHOP DRAWINGS.

SCHEDULE OF WALL FINISHES :

MARK	WALL DESCRIPTION
EW-1	150 mm THK. CHB EXTERIOR WALL WITH PLAIN CEMENT PLASTER PAINTED FINISH (SUBMIT COLOR SCHEMES FOR APPROVAL)
EW-1a	150 mm THK. CHB EXTERIOR WALL RAILING WITH PLAIN CEMENT PLASTER PAINTED FINISH (SUBMIT COLOR SCHEMES FOR APPROVAL)
EW-2	100 mm THK. R.C. PARAPET WITH PLAIN CEMENT PLASTER PAINTED FINISH (SUBMIT COLOR SCHEMES FOR APPROVAL)
IWF-1	100 mm THK / 150 mm THK. CHB INTERIOR WALL WITH PLAIN CEMENT PLASTER PAINTED FINISH (SUBMIT COLOR SCHEMES FOR APPROVAL)
IWF-2	200 X 200 mm VITRIFIED GLAZED TILE WALL FINISH (SIZE & OR COLOR FOR APPROVAL BY THE END-USER) - TYPICAL ON ALL TOILET WALLS

SCHEDULE OF FLOOR FINISHES :

MARK	FLOOR DESCRIPTION
FL-1	PLAIN CEMENT FLOOR FINISH WITH FLOOR HARDENER (PROVIDE 6mm GROOVES @ 1000 mm O.C. BOTH WAYS)
FL-2	PLAIN CEMENT FLOOR FINISH WITH FLOOR HARDENER FOR FL-2a - PLAIN CEMENT FLOOR FINISH WITH INTEGRAL MEMBRANE WATER PROOFING
FL-3	200 X 200 mm VITRIFIED UNGLAZED TILES FLOOR FINISH
FL-4	NON - SKID CEMENT FLOOR FINISH WITH 6mm GROOVE LINES
FL-5	600 X 600 mm VITRIFIED GLAZED TILES FLOOR FINISH



1 ROOF PLAN
A-4 SCALE 1:100 M.



REPUBLIC OF THE PHILIPPINES
DEPARTMENT OF PUBLIC WORKS AND HIGHWAYS
REGION III
BATAAN 1ST DISTRICT ENGINEERING OFFICE
OFFICE OF THE DISTRICT ENGINEER
ROMAN EXPRESSWAY, MULAWIN ORANI, BATAAN

PROJECT/LOCATION :
CONSTRUCTION OF FOUR (4) STOREY -
SIXTEEN (16) CLASSROOM SCHOOL BUILDING
NAGBALAYONG NATIONAL HIGH SCHOOL
MORONG, BATAAN.

SHEET CONTENTS :
AS SHOWN

DRAFTED :
ROLANDO P. SOLIMAN
ARCHITECT II
PREPARED :
DENNIS L. GONZALES
ENGINEER II

REVIEWED :
MARY ANN B. AMIO
ENGINEER II
DATE:

SUBMITTED :
CELIA M. RAMOS
CHIEF, PLANNING AND DESIGN SECTION
DATE:

RECOMMENDED :
REGINA H. AGUSTIN
ASSISTANT DISTRICT ENGINEER
DATE:

APPROVED :
ERLINDO R. FLORES, JR.
DISTRICT ENGINEER
DATE:

CONCURRED :
ROMEO M. ALIP, PH. D., CESO V
SCHOOL DIVISION SUPERINTENDENT
DATE:

SET NO. A
SHEET NO. 4 65