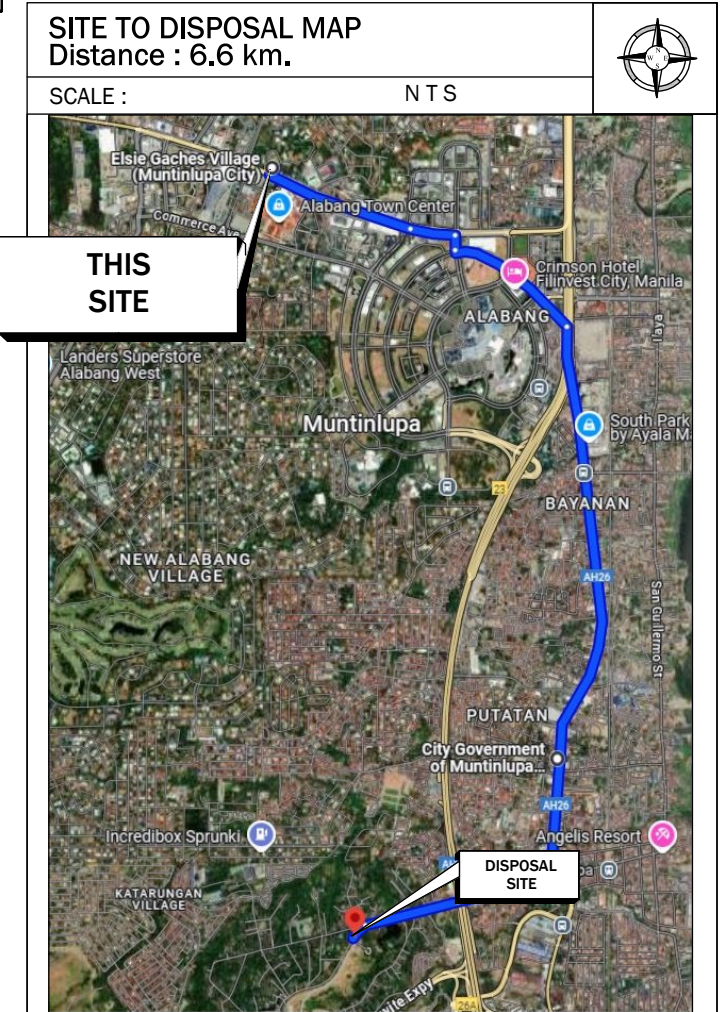
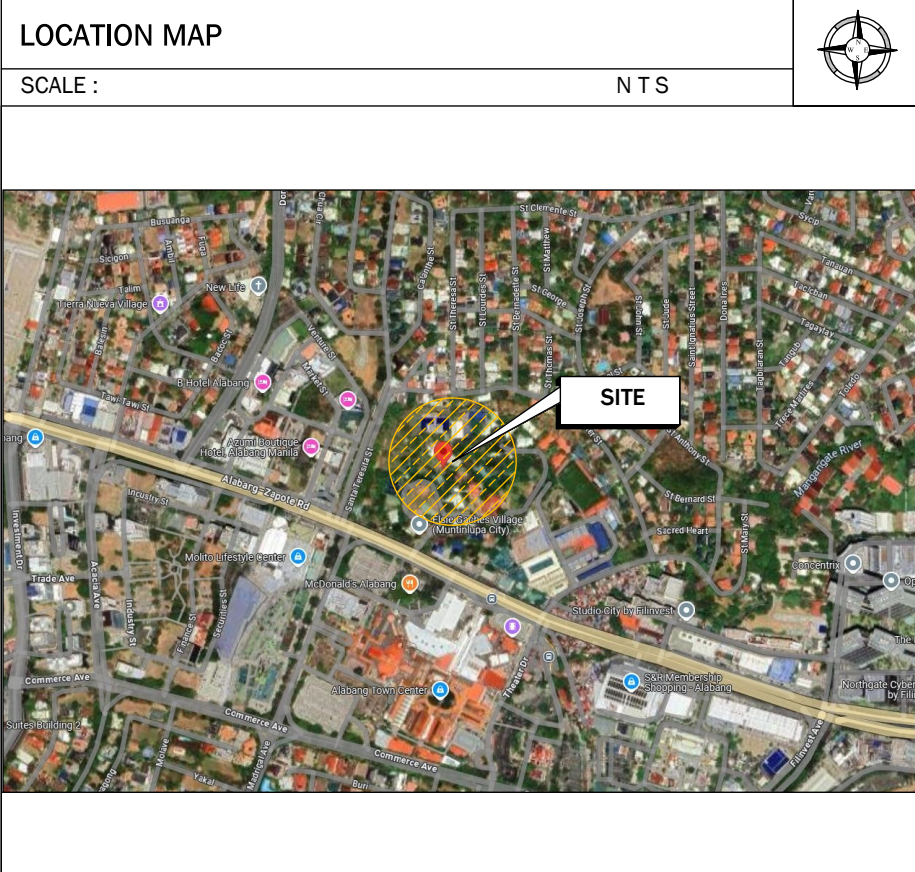
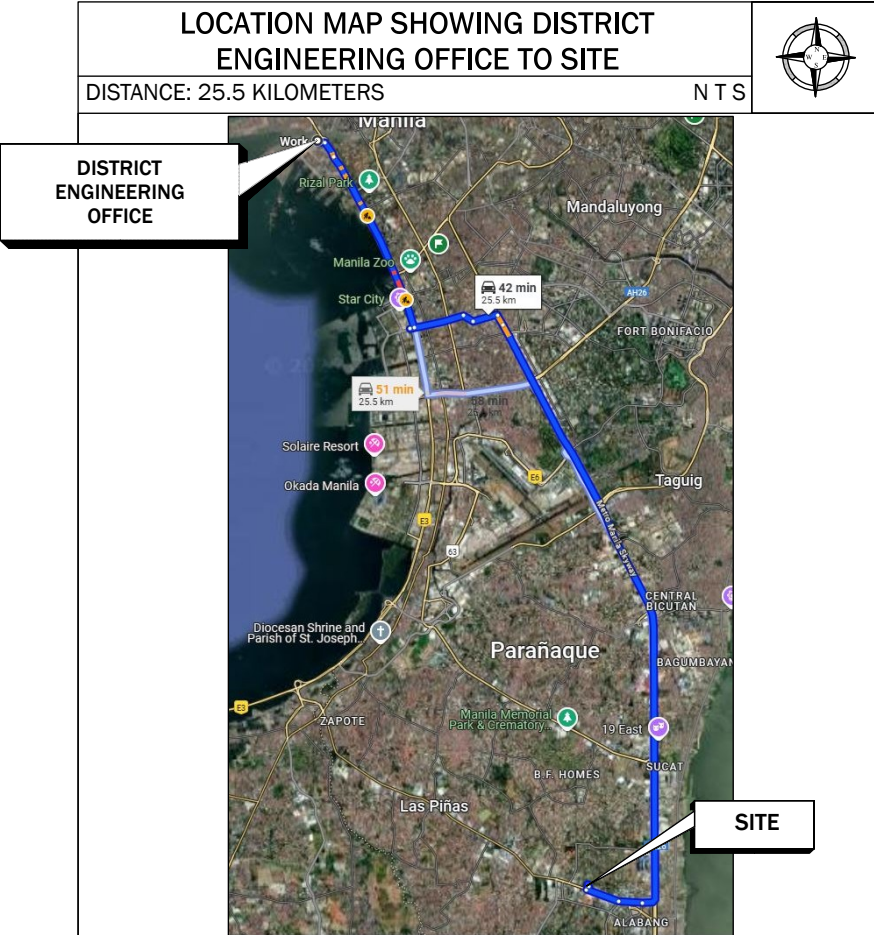




SUMMARY OF QUANTITIES				
ITEM NO.	DESCRIPTION	QTY	UNIT	REMARKS
<b>PART A Facilities for the Engineer</b>				
A.1.1 (8)	Provision of Field Office for the Engineer (Rental Basis)	1.00	month	
<b>PART B OTHER GENERAL REQUIREMENTS</b>				
B.5(1)	Project Billboard/ Signboard	2.00	each	
B.7 (1)	Occupational Safety and Health Program	1.00	I.s.	
B.9(1)	Mobilization/Demobilization	1.00	I.s.	
B.24(1)	General Scaffolding and Shoring	1.00	I.s.	
<b>PART III Civil, Mechanical, Electrical, &amp; Sanitary/Plumbing Works</b>				
<b>Division I General</b>				
<b>PART A Earthworks</b>				
801(1)	Removal of Structures and Obstruction	1.00	I.s.	
<b>PART C Finishings and Other Civil Works</b>				
1008(1)c	Aluminum Glass Window (Awning Type)	6.00	m²	
1010(2)b	Wooden Panel Door	7.56	m²	
1018(2)	Unglazed Tiles	405.22	m²	
1018(5)	Glazed Tiles	120.00	m²	
1032(1)a	Painting Works (Masonry/Concrete)	64.32	m²	
1032(1)b	Painting Works (Wood)	15.12	m²	
<b>PART D ELECTRICAL</b>				
1100(10)	Conduits, Boxes & Fittings	1.00	I.s.	
1101(33)	Wires and Wiring Devices	1.00	I.s.	
1102(1)	Panelboard with Main & Branch Breakers	1.00	I.s.	
1103(1)	Lighting Fixtures and Lamps	1.00	I.s.	

INDEX of SHEETS	
SHEET No.	SHEET CONTENT
1	COVER SHEET
2	INDEX OF SHEETS , MAP SHOWING DEO TO SITE, VICINITY MAP, LOCATION MAP, SITE TO DISPOSAL MAP, SUMMARY OF QUANTITIES
3	FRONT ELEVATION, RIGHT SIDE ELEVATION, LEFT SIDE ELEVATION, REAR ELEVATION
4	SAMPAGUITA & CAMIA COTTAGE GROUND AND SECOND FLOOR PLAN (PAINTING WORKS)
5	SAMPAGUITA & CAMIA COTTAGE GROUND FLOOR PLAN (TILE SETTING PLAN) DETAILED SECTION FOR WALL TILING SCHEDULE OF DOORS AND WINDOWS
6	ELECTRICAL LAYOUT FOR GROUND AND SECOND FLOOR
7	GENERAL NOTES AND SPECIFICATION LOAD SCHEDULE MAIN BREAKER LAYOUT
8	PROJECT BILLBOARD DETAILS COA PROJECT BILLBOARD DETAILS PROVISIONS FOR OFFICE OF FIELD ENGINEER



REPUBLIC OF THE PHILIPPINES  
NATIONAL CAPITAL REGION  
LAS PIÑAS - MUNTINLUPA  
DISTRICT ENGINEERING OFFICE  
2ND STREET, PORT AREA, MANILA

PROJECT NAME AND LOCATION:  
**Repair/Maintenance of  
DSWD Buildings Elsie Gaches Village,  
(Sampaguita Cottage & Camia Cottage)**  
Brgy. Alabang, Muntinlupa City

SHEET CONTENTS:  
INDEX OF SHEETS  
MAP SHOWING DEO TO SITE  
VICINITY MAP  
LOCATION MAP  
SITE TO DISPOSAL MAP  
SUMMARY OF QUANTITIES

DRAFTED:  
**MIKKO SHAIRO B. DE GUZMAN**  
ENGINEER II  
PREPARED:  
**MIKKO SHAIRO B. DE GUZMAN**  
ENGINEER II

REVIEWED:  
**ARVIN E. ENDRIGA**  
ENGINEER II  
DATE:

SUBMITTED:  
**LORETO C. BALEÑA, JR**  
CHIEF , MAINTENANCE SECTION  
DATE:

RECOMMENDED:  
**MARIA CRISTINA E. TACARDON**  
ASSISTANT DISTRICT ENGINEER  
DATE:

APPROVED:  
**ISABELO C. BALEROS**  
DISTRICT ENGINEER  
DATE:

SET NO.  
**A  
1 5**

SHEET NO.  
**2  
8**