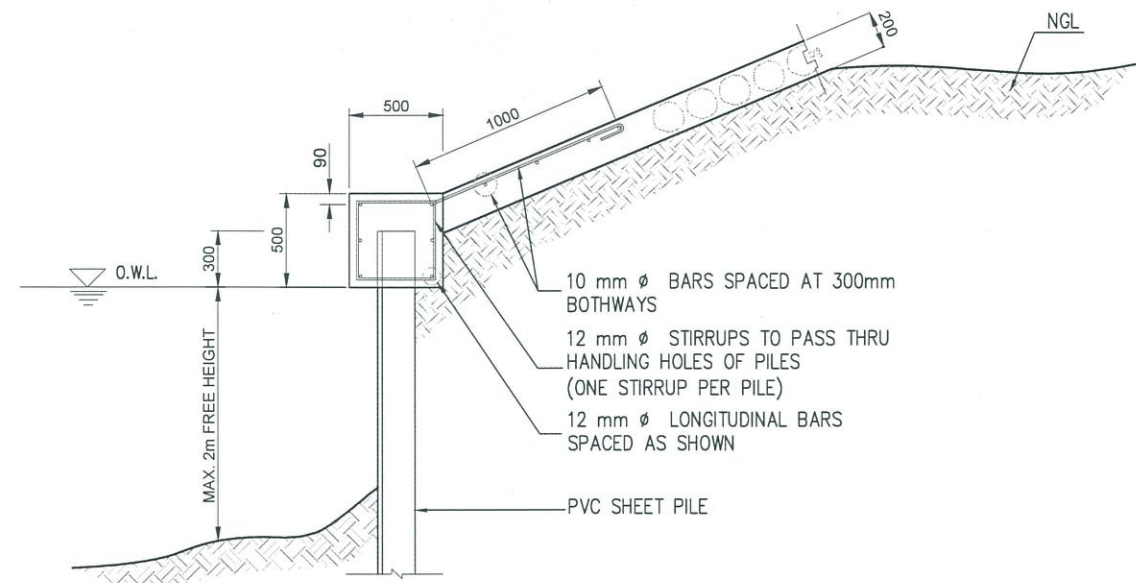




REPUBLIC OF THE PHILIPPINES
DEPARTMENT OF PUBLIC WORKS AND HIGHWAYS
BUREAU OF DESIGN, WATER PROJECTS DIVISION
BONIFACIO DRIVE, PORT AREA, MANILA

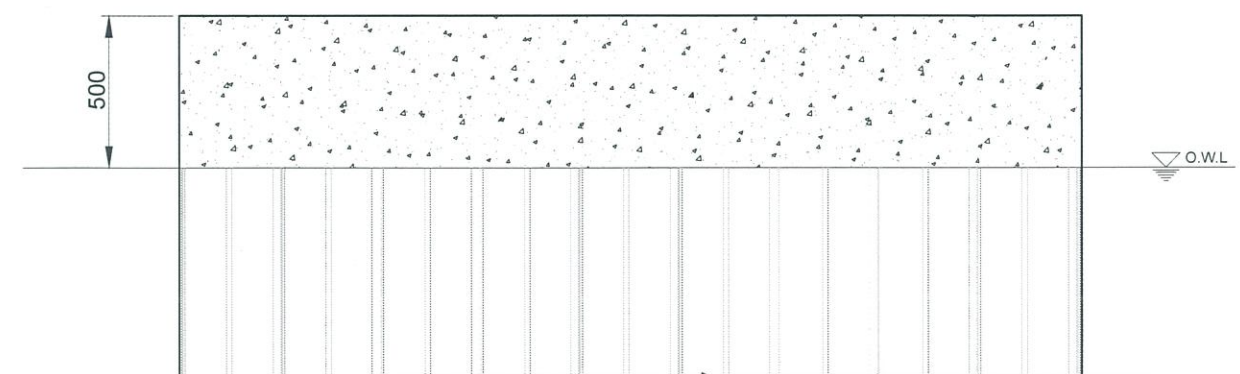
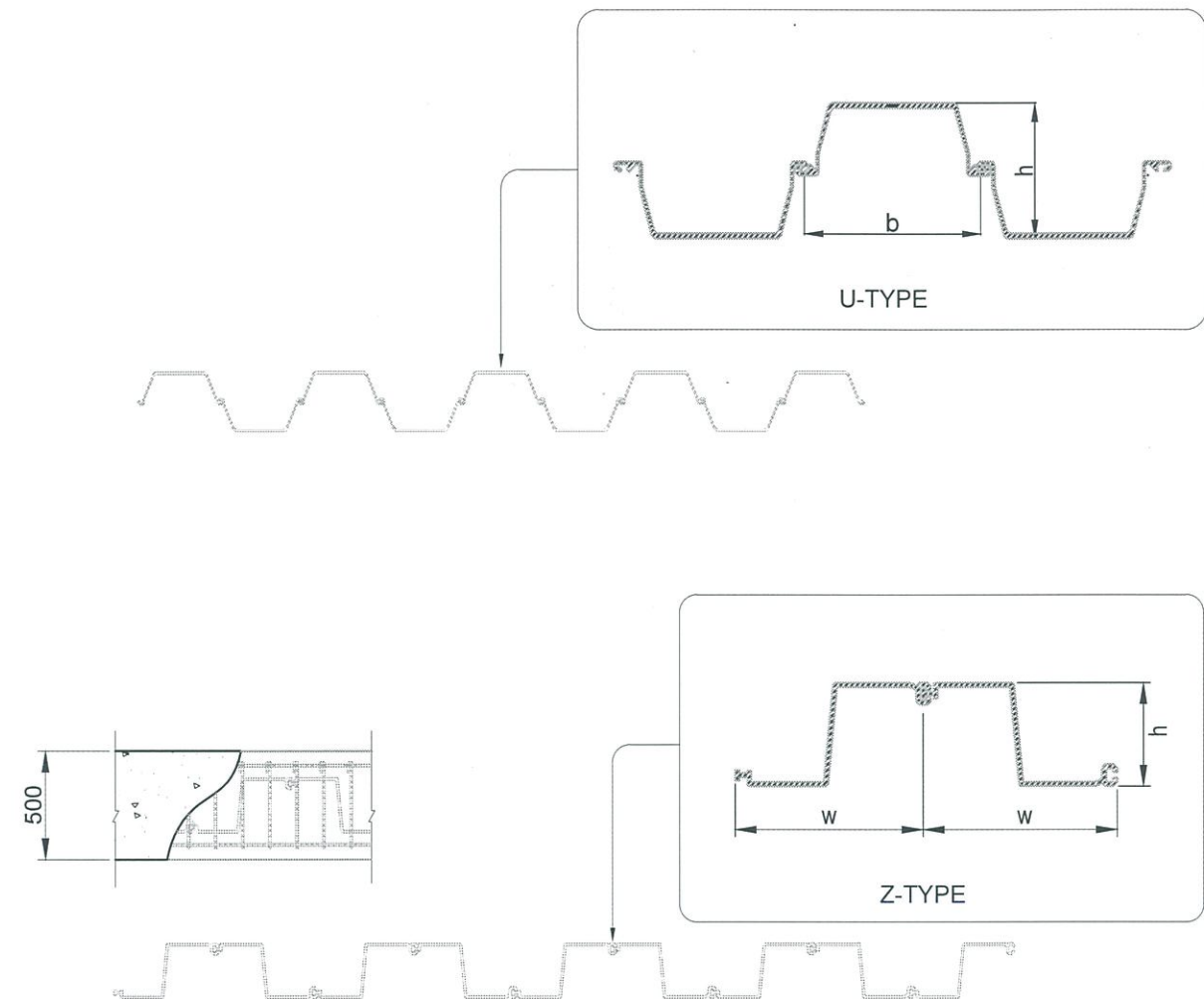
STANDARD POLYVINYL CHLORIDE (PVC) SHEET PILE FOR REVETMENTS



PILE CAP DETAIL
NOT TO SCALE

GENERAL NOTES :

1. USE OF POLYVINYL CHLORIDE (PVC) SHEET PILES SHALL BE BASED ON AN ESTIMATED COST COMPARISON WITH OTHER TYPES OF SHEET PILES, E.G. CONCRETE AND STEEL, FOR POTENTIAL COST SAVINGS AND SHALL MEET ALL THE PERFORMANCE REQUIREMENTS FOR THE SPECIFIC APPLICATION, INCLUDING STRENGTH, STIFFNESS, INSTALLATION, INTERLOCK INTEGRITY, DURABILITY AND LONGEVITY. SUCH PILE SHALL NOT BE USED WHEN LARGE IMPACTS DURING THE DESIGN LIFE ARE POSSIBLE, I.E. LARGE DEBRIS AND VESSEL.
2. THE PVC SHEET PILES AND OTHER APPURTENANT MATERIALS SHALL CONFORM TO THE REQUIREMENTS AND SPECIFICATIONS PRESCRIBED IN DEPARTMENT ORDER 244, SERIES OF 2016 RE: DPWH STANDARD SPECIFICATION FOR ITEM 523 - POLYVINYL CHLORIDE (PVC) SHEET PILES.
3. THE LENGTH AND SECTION MODULUS OF THE PVC SHEET PILE SHALL BE BASED ON THE RESULTS OF THE GEOTECHNICAL INVESTIGATION AND STABILITY ANALYSIS.
4. THE FREE HEIGHT OF THE PVC SHEET PILE SHALL NOT EXCEED TWO (2) METERS TO LIMIT POTENTIAL DEFLECTION.
5. THE CONTRACTOR SHALL FURNISH AND DRIVE TEST PILES OF THE REQUIRED DIMENSIONS AT THE LOCATIONS DESIGNATED BY THE ENGINEER. FOR EACH SHIPMENT, THE CONTRACTOR SHALL SUBMIT MILL CERTIFICATES PROVIDED BY THE PVC SHEET PILE MANUFACTURER PRIOR TO INSTALLING.
6. ALL PVC SHEET PILES SHALL BE DRIVEN AS SHOWN ON THE PLANS OR AS DIRECTED BY THE ENGINEER. EXCAVATIONS FOR THE FOUNDATION ON WHICH THE PVC SHEET PILES ARE TO BE DRIVEN SHALL BE COMPLETED BEFORE THE PILE DRIVING, UNLESS OTHERWISE SPECIFIED OR APPROVED BY THE ENGINEER.
7. SPLICING OF PVC SHEET PILES SHALL NOT BE ALLOWED.



ELEVATION
NOT TO SCALE



REPUBLIC OF THE PHILIPPINES
DEPARTMENT OF PUBLIC WORKS AND HIGHWAYS
BUREAU OF DESIGN
WATER PROJECTS DIVISION
BONIFACIO DRIVE, PORT AREA, MANILA

SHEET TITLE:	SHEET CONTENTS:	PREPARED BY:	DATE:	SIGNATURE:	REVIEWED BY:	RECOMMENDING APPROVAL:	APPROVED BY:	SET NO:	SHEET NO:
STANDARD POLYVINYL CHLORIDE (PVC) SHEET PILE FOR RETAINMENTS	GENERAL NOTES, PILE CAP DETAIL AND ELEVATION	DESIGN: MARK GERSON P. BARIL ENGINEER II CRISSA RICA V. ESPERITU ENGINEER II			LEONARDO L. LINGAN CHIEF, WATER PROJECTS DIVISION BUREAU OF DESIGN	LEA N. DELFINADO OFFICER-IN-CHARGE BUREAU OF DESIGN	GILBERTO S. REYES ASSISTANT SECRETARY FOR TECHNICAL SERVICES	EMIL K. SADAIN, CESO I UNDERSECRETARY FOR UPMO OPERATIONS AND TECHNICAL SERVICES	STD 1/1