



Republic of the Philippines  
DEPARTMENT OF PUBLIC WORKS AND HIGHWAYS  
**CENTRAL OFFICE**  
Manila

097.13 DPWH  
10-15-2020

OCT 14 2020

DEPARTMENT ORDER )  
No. 94 )  
Series of 2020 )

SUBJECT: **REVISED GUIDELINES ON THE  
ACCREDITATION OF THE  
CONTRACTORS' AND CONSULTANTS'  
PROJECT ENGINEERS**

In order to ensure that only qualified and competent project engineers will be assigned by the contractors and consultants in DPWH projects, the guidelines on the accreditation of Contractors' and Consultants' Project Engineers are hereby prescribed.

Based on the study conducted wherein applicants who passed the accreditation examinations in CY 2019 and the average number of projects implemented by the Department in CY 2016-2020, there was a need to revise the limits of assignment for Region-and District-implemented projects. Moreover, after several dialogues with and requests from the affected stakeholders, it was also provided in the amended guidelines to include examination venues in Cebu and Davao to make the accreditation examinations more accessible and economical for applicants coming from the Visayas and Mindanao regions.

This order takes effect immediately.

**MARK A. VILLAR**  
Secretary

15.1 MGM/EKS

Department of Public Works and Highways  
Office of the Secretary



WIN0U01840

## **REVISED GUIDELINES ON THE ACCREDITATION AND ASSIGNMENT OF CONTRACTORS' AND CONSULTANTS' PROJECT ENGINEERS**

### **1.0 CRITERIA FOR ACCREDITATION**

The following criteria shall be applied in the evaluation for the accreditation of Project Engineers.

a.	Education and Eligibility	Pass/Fail
b.	Accreditation Examination	35 points
c.	Training and Experience	35 points
	- Training	10 points
	- Experience	25 points
d.	Performance Evaluation	<u>30 points</u>
Total		100 points

#### **1.1 EDUCATION AND ELIGIBILITY**

The applicant must be registered and licensed Civil Engineer, including foreign applicant. A certificate of registration/license with professional identification card or a Special Temporary Permit with professional temporary identification card all issued by the Professional Regulation Commission (PRC) shall be required from foreign engineers.

#### **1.2 ACCREDITATION EXAMINATION 35 points**

The rating for this criterion shall be based on the result of the examination administered to Contractors' and Consultants' Project Engineers. The passing score shall be **60** to meet the initial criterion of the accreditation.

The raw score obtained in the examination shall be multiplied by the factor weight of 35% to obtain the earned points for this criterion.

#### **1.3 TRAINING AND EXPERIENCE 35 points**

Training and experience shall be evaluated as follows:

##### **1.3.1 Training 10 points**

The rating for this criterion shall be based on the relevant/equivalent trainings attended by the project engineer. The relevant/equivalent trainings and their corresponding points are as follows:

**a. Planning, Design, Construction Methods & Techniques** **4 points**

Credit 1 point for equivalent training on Construction methods and Techniques (or its equivalent) and another 1 point each for any three equivalent trainings related to the construction aspect of project implementation as indicated in Annex "A", to obtain the total points, which shall not exceed 4 points.

**b. Materials Quality Control** **4 points**

Credit one (1) point for completing the Materials Quality Control in Project Implementation (or its equivalent) and another 1 point each for any three (3) equivalent trainings related to the quality control in Annex "A", to get the total points, which shall not exceed 4 points.

**c. Project Management and Supervision** **2 points**

Credit 1 point each for any two trainings on Project Management (or its equivalent) as shown in Annex "A", to get the total points, which shall not exceed 2 points.

Only topic/training with at least minimum of eight (8) hours duration shall be given credit as listed in Annex "A".

**1.3.2 Experience** **25 points**

The rating for this criterion shall be based on:

- a) The number of projects handled by the applicant in a capacity as Project/Resident Engineer
- b) The number of years that the applicant has been handling projects as Project/Resident Engineer

Experience shall be rated as follows:

- a. Number of Contracts Handled Corresponding to Costs, 10 maximum points

Contract Cost	≤ 50M (1)	> 50M to 200M (2)	> 200M to 500M (3)	> 500M (4)	Points
Number of Contracts	1-5	1-3			4
	6-10	4-6	1-2		5
	11-15	7-9	3-4	1	6
	16-20	10-12	5-6	2	7
	21-25	13-15	7-8	3	8
	26-30	16-18	9-10	4	9
	More than 30	More than 18	More than 10	More than 4	10 (maximum)

Points for this criterion shall be the highest point earned based on the number of contracts using columns 1, 2, 3 and 4 of the above table.

Ex.

Column	No. of Contracts	Points
Column (1)	= 3	= 4
Column (2)	= 5	= 5
Column (3)	= 8	= 8
Column (4)	= 1	= 6

Highest point earned = 8 points

- b. Aggregate number of years handling contracts, 15 maximum points

- 1 point per year, but the total shall not exceed 15 points

For DPWH-implemented projects, submission of proofs/evidences as supporting documents for relevant experiences (indicating Name of Project, Contract Amount, Start and Completion Dates) to act as Project/Resident Engineer, certification from the head of office with job description, memorandum designation or any other documents, e.g. Statement of Work Accomplished and project billings/vouchers bearing the applicant's signature and authenticated by the head of DPWH implementing office are required as basis for evaluation of work experience.

For projects implemented outside DPWH, submission of proofs/evidences as supporting documents for relevant experiences as well as trainings/seminars attended shall be certified as true copies of the original documents by the Authorized Managing Officer of the contractor/consultant.

## **1.4 PERFORMANCE**

**30 points**

The rating for this criterion shall be based on the performance evaluation of the Contractors'/Consultants' Project Engineer in the actual implementation of on-going or completed DPWH projects.

Three (3) projects of any category which are included during the project assessments/inspections shall be nominated by the Contractors'/Consultants' Project Engineer for performance evaluation. The three (3) projects inspected shall be rated for its compliance to quality and/or workmanship of completed works whichever is available during their implementation.

The criterion rating shall be obtained by multiplying the performance rating by the weight factor of 30%. The performance rating shall be based on the average ratings of three (3) evaluated projects included in the project assessment/evaluation reports.

A Certificate of Performance Rating for the nominated three (3) projects shall be requested from the Bureau of Quality and Safety (BQS) and shall be attached to the request for application for accreditation.

### **1.4.1 Report on the Quality of the Completed Works**

The rating for this criterion shall be on a per item of work basis done completely in accordance with the approved plans and specifications reflecting quality of workmanship applied. An item of work found to have defects shall be rated commensurately with the gravity of defects such as less serious defect, serious defect and very serious defect as stipulated in Department Order No. 102, series of 2016.

The rating of each evaluated project shall be obtained from the rating of A.3-Quality of the Completed Works from the QAU reports.

### **1.4.2 Evaluation Report on the Workmanship Applied**

The rating for this criterion shall be based on the workmanship aspect of the quality of work which are verifiable in accordance to the approved plans and specifications. In rating this aspect, efficiency of methodology shall be considered as per Amended CPES Implementing Guidelines for Infrastructure Projects as Approved by NEDA pursuant to IRR of RA 9184.

The rating of each evaluated project shall be obtained from the rating of Workmanship from the CPES evaluation reports.

**Example of Performance Evaluation:**

A. Quality of Completed Works, A.3 (50 pts.)

Project		A.3 Rating
Project (1)	=	25
Project (2)	=	20
Project (3)	=	28
Total	=	73
<b>Average</b>	=	<b>24.33</b>

$$\begin{aligned}
 \text{Performance Rating} &= \text{Average} \times \text{Factor (2.0)} \times 30\% \\
 &= 24.33 \times 2.0 \times 30\% \\
 &= 14.60\%
 \end{aligned}$$

B. Workmanship (On-Going Projects, 40 pts.) (Completed Projects, 50 pts.)

b.1 On-Going Project (40 pts.)

Project		Rating
Project (1)	=	30
Project (2)	=	35
Project (3)	=	32
Total	=	97
<b>Average</b>	=	<b>32.33</b>

$$\begin{aligned}
 \text{Performance Rating} &= \text{Average} \times \text{Factor (2.5)} \times 30\% \\
 &= 32.33 \times 2.5 \times 30\% \\
 &= 24.25\%
 \end{aligned}$$

b.2 Completed Project (50 pts.)

Project		Rating
Project (1)	=	35
Project (2)	=	38
Project (3)	=	30
Total	=	103
<b>Average</b>	=	<b>34.33</b>

$$\begin{aligned}
 \text{Performance Rating} &= \text{Average} \times \text{Factor (2.0)} \times 30\% \\
 &= 34.33 \times 2.0 \times 30\% \\
 &= 20.60\%
 \end{aligned}$$

## 2.0 CLASSIFICATION OF PROJECT ENGINEERS

Project engineers shall be classified according to their total score. The total score shall be the sum of the points obtained in Sections 1.2, 1.3 and 1.4.

The classification of project engineers shall be as follows:

Total Score	Classification
80 & above	Project Engineer II
60 – 79	Project Engineer I

## 3.0 ASSIGNMENT OF CONTRACTORS'/CONSULTANTS' PROJECT ENGINEERS TO DPWH PROJECTS

Only accredited project engineers may be assigned to DPWH projects, subject to the following limits of assignment:

For Regional/District Offices

Classification	Limits of Assignment
PE II	Ten (10) contracts located within the same province for simultaneous assignments, each costing more than 100M
PE I	Eleven (11) contracts located within the same province for simultaneous assignments, each costing 50M to 100M

Non-accredited Project Engineer may be assigned to contract costing less than 50M.

For Unified Project Management Offices (UPMOs)

Classification	Limits of Assignment	
	Maximum Number of Contracts	Maximum Cost of Project
PE II	1	>500M
PE I	2	500M

## 4.0 PROCEDURE FOR ACCREDITATION

Process flow in Accreditation of Contractors' and Consultants' Engineers is shown in Annex "B".

### 4.1 Who may be Accredited

All registered and licensed civil engineers of the contractors and consultants, including foreigners, who are assigned as project engineers to DPWH-

implemented projects, may apply for accreditation and must pass the given accreditation examination.

All government engineers are prohibited from applying for the accreditation while still employed by the government including those under the NGAs, SUCs, GOCCs, LGUs, GFIs, and other governmental organizations.

#### **4.2 Accreditation Requirements**

All applications for the scheduled accreditation examination must be submitted to the Bureau of Quality and Safety (BQS) thru the Chief of the Construction Division of any DPWH Regional Office, for validation and evaluation together with the following documents:

- a. Duly accomplished application form for Examination (Annex "C") that can be downloaded at the DPWH website ([www.dpwh.gov.ph/dpwh/business/index](http://www.dpwh.gov.ph/dpwh/business/index)) entitled Application Form for Examination for Accreditation of Contractors' and Consultants' Project Engineers or can be secured from any DPWH Regional Office thru the Construction Division.
- b. One (1) passport size photograph on a white background with nametag pasted in the application form.
- c. Certified true copy of PRC ID as registered and licensed Civil Engineer for local engineers and certificate of registration/license with professional identification card or a Special Temporary Permit with professional temporary identification card all issued by PRC for foreign engineers.

For passers of the given examination, application for accreditation should be submitted to the Bureau of Quality and Safety (BQS):

- a. Duly accomplished application form for Accreditation (Annex "D") that can be downloaded at the DPWH website ([www.dpwh.gov.ph/dpwh/business/index](http://www.dpwh.gov.ph/dpwh/business/index)) entitled Application Form for Accreditation of Contractors' and Consultants' Project Engineers.
- b. All attachments required under Section 1.3 for Training and Experience, of this guidelines.
- c. Certificate of Performance Rating for nominated three (3) projects issued by BQS.

#### **4.3 Accreditation Examination**

An accreditation examination shall be administered to all qualified applicants. At least two (2) examinations per year to be held every first Saturday of February and July will be given simultaneously in Manila, Cebu and Davao.

Applicants who failed the given examination may apply again and take the examination until he/she passes. However, applicants who applied but failed to take the examination three (3) times shall be perpetually barred from taking the examination.

#### **4.4 Issuance of Certificate of Accreditation and Accreditation ID**

- a) A Certificate of Accreditation and Identification Card will be issued to all applicants who will meet the accreditation criteria.
- b) The Certificate of Accreditation, unless revoked or suspended for cause, shall be valid for three (3) years from the date it was issued, and shall be renewed thereafter.

The accredited Contractors'/Consultants' Project Engineer should file his application for renewal of accreditation certificate personally by presenting valid PRC ID and other government issued ID cards for authentication for local engineers and certificate of registration/license with professional identification card or a Special Temporary Permit with professional temporary identification card all issued by PRC for foreign engineers.

All requests for renewal of accreditation certificate must be addressed to the Chairman, Accreditation Committee for Contractors' and Consultants' Project Engineers, thru the Bureau of Quality and Safety (BQS) together with the following requirements:

- b.1) Request letter of the concerned Project Engineer signifying intention to renew his certificate of accreditation.
- b.2) Original/Renewed Certificate of Accreditation with expired validity date.
- b.3) Certification of Employment from the current employer, if there is any, indicating the date of employment and/or affidavit attesting that the applicant is not connected or employed with any government office.
- b.4) Photocopy of valid PRC ID and accreditation card as accredited Contractor's/Consultant's Project Engineer.
- b.5) Duly accomplished application form for the Renewal of Certificate (Annex "E") that can be downloaded at the DPWH website ([www.dpwh.gov.ph/dpwh/business/index](http://www.dpwh.gov.ph/dpwh/business/index)) entitled Application

Form for the Renewal Certificate for Accreditation of Contractors'  
and Consultants' Project Engineers.

**4.5 Change in Accreditation Status**

- a) An accredited DPWH Project Engineer who retired or resigned from Office may be considered as an accredited Contractor's/Consultant's Project Engineer upon his request, subject to the approval of the Secretary thru the recommendation of the Accreditation Committee, corresponding to the following rank:

<b>DPWH Accreditation Classification</b>	<b>Proposed Contractors'/Consultants' Accreditation Classification</b>
Project Engineer III	Project Engineer II
Project Engineer II	Project Engineer I
Project Engineer I	Project Engineer I
Junior Project Engineer	Project Engineer I

However, newly retired or resigned DPWH engineer should observe the one (1) year prohibition to practice his profession in private companies that conduct business with DPWH as provided under Section 7 (Prohibited Acts and Transactions) of Republic Act No. 6713.

- b) Requests for change in classification status from accredited DPWH Project Engineer to Contractor's/Consultant's Project Engineer must be submitted to the Bureau of Quality and Safety (BQS) together with the following requirements:
- b.1) Request letter from the concerned Project Engineer.
  - b.2) For resigned Project Engineer:
    - Acceptance of Resignation from the appointing authority (certified true copy)
  - b.3) For retired Project Engineer, certified true copies of any of the following:
    - approved clearance from the Implementing Office
    - GSIS clearance
    - Ombudsman clearance (if applicable)

## **5.0 TESTIMONIAL ACCREDITATION**

Non-accredited DPWH personnel who retired or resigned from Office and held second level positions (Salary Grade 24 and below) may be entitled for testimonial accreditation as Contractors'/Consultants' Project Engineer upon submission of application and documents required for testimonial accreditation as follows:

- a) The applicant must be a BSCE graduate and a registered Civil Engineer (RA 1080).
- b) The applicant should be at least 50 years of age.
- c) The applicant should meet any of the following:
  - c.1 Minimum 15 years experience in handling projects as Contractor's/Consultant's Project Engineer with relevant trainings attended
  - c.2 Served as contributor/examiner in the qualifying examination for accreditation of Contractors'/Consultants' Project Engineers
  - c.3 Acted as resource person in trainings and seminars relative to construction methodology and quality control.
- d) The applicant must have obtained Very Satisfactory in his last rating from the Head of DPWH Implementing Office indicated in the Acceptance of Resignation if the applicant resigned from office or the applicant must have obtained Very Satisfactory rating for the last two (2) consecutive rating periods in service prior to separation/retirement from office. However, applicants who failed to obtain a Very Satisfactory Rating on at least one (1) rating period shall be disqualified outright.

Upon compliance with all of the above conditions, the BQS shall then evaluate the applicant's qualifications based on:

**(1) Education and Eligibility, 15 points**

Relevant Masteral Degree – 10 pts.  
Relevant Doctorate Degree – 5 pts.

**(2) Training, 25 points**

Planning, Design, Construction Methods and Techniques – max. 12 pts.  
Materials Quality Control – max. 8 pts.  
Project Management and Supervision – max. 5 pts.

One (1) point each shall be credited for any completed equivalent trainings/seminars as listed in Annex "A" of this guidelines.

**(3) Experience, 60 points**

**a) For Project Supervision Experience, 20 points**

Experience shall be evaluated based on Section 1.3.2 – Experience of this guidelines.

b) For Managerial/Supervisory Experience, 20 points

Additional point/s for each year of managerial/supervisory experience shall be credited for applicants with previous managerial and supervisory positions:

Division Chief, Regional Office	2 pts.
Engineer V, Central Office	2 pts.
Assistant District Engineer	2 pts.
Engineer IV, Central/Regional Office	2 pts.
Section Chief, District Engineering Office	1 pt.

c) Other Experience as Examiner/Resource Speaker, 20 points

Additional points shall be credited for applicants who have served/acted as:

Contributor/Examiner in the qualifying examination for accreditation of DPWH Field Engineers and/or Contractors'/Consultants' Project Engineers	10 points
---	-----------

Resource Person for technical trainings/seminars on construction methodology, materials quality control and project management and other relevant trainings crediting one (1) point for every training/seminar not to exceed ten (10) points	10 points
--	-----------

The total score shall be the sum of the ratings obtained in education and eligibility, training and experience. Classification shall be according to their total score.

The classification of testimonial accreditation of project engineers shall be as follows:

<b>Total Score</b>	<b>Classification</b>
80 and above	Project Engineer II
60 - 79	Project Engineer I

The BQS shall recommend testimonial accreditation for all successful applicants to the Secretary.

Requests for Testimonial Accreditation must be submitted to the Bureau of Quality and Safety (BQS) together with the certified copies of latest government service record, diploma or transcript of records for completed doctorate and/or masteral course/s and relevant documents required under Sections 1.3 and 4.5b of this guidelines.

The BQS shall evaluate the applicant's qualification and if found acceptable, recommend testimonial accreditation to the Secretary.

Testimonial accreditation for personnel who held third level positions shall be prescribed under a separate issuance.

## **6.0 EFFECTIVITY**

Effective January 04, 2022 only accredited project engineers of the contractors and consultants may be assigned to supervise DPWH projects.

## Annex A

### RELEVANT/EQUIVALENT TRAININGS WITH THEIR CORRESPONDING POINTS

	Weight
<b>A. Planning, Design, Construction Methods &amp; Techniques</b>	<b>4 points</b>
1. One (1) point for completing equivalent training on any one (1) of the following Construction Methods and Techniques:	
1.1 Construction Methods and Techniques for Bridges/Bridge Construction	
1.2 Construction Methods and Techniques for Buildings	
1.3 Construction Methods and Techniques for Flood Control and Drainage Structures	
1.4 Construction Methods and Techniques for Highways/Road Construction Methods and Techniques	
2. One (1) point each for completing any three (3) of the following equivalent trainings/seminars:	
<u>Planning</u>	
2.1 Computer Aided Preparation of Plans	
2.2 Flood Prevention and Mitigation	
2.3 Planning and Design of Flood Control Structures	
2.4 Safety in Construction	
2.5 Subsurface Exploration	
2.6 Traffic Engineering	
2.7 Training in Various Courses in Road Safety	
2.8 Transportation Engineering	
2.9 Workshop on Hydraulics and River Hydraulics Model using GIS, HEC-HMS and HEC-RAS	
<u>Design</u>	
2.10 Applications of Gabions and Mattresses	
2.11 Bridge Design with Computer Application using STAAD-Pro	
2.12 Computer Aided Design (Civil 3D)	
2.13 Earthquake Engineering and Infrastructure Rehabilitation	
2.14 Flood Control and Urban Drainage Design with Computer Application	
2.15 Geotechnical Engineering	
2.16 Highway Design with Computer Application using STAAD-Pro	
2.17 Highway Foundation Investigation and Analysis	
2.18 Hydrology Seminar	
2.19 Principles of Bridge Design	
2.20 Principles of Highway Design	
2.21 Principles of Highway Location, Survey and Design	
2.22 River and SABO Engineering	
2.23 Slope Stability	
2.24 Structural Analysis and Design Software (STAAD Pro)	
2.25 Structural Design	
2.26 Surveys and Site Investigation	

Construction

- 2.27 Bridge and Flood Control Project Implementation and Assessment
- 2.28 Bridge Assessment, Maintenance and Repair/Rehabilitation
- 2.29 Bridge Engineers Accreditation Course
- 2.30 Bridge Management System
- 2.31 Construction of Ports and Harbors
- 2.32 Construction of Water Supply Project
- 2.33 Labor-Based Technology
- 2.34 Pothole Patching Technology
- 2.35 Quality Assurance Seminar
- 2.36 Road and Bridge Information Application
- 2.37 Road Maintenance and Rehabilitation

**B. Materials Quality Control 4 points**

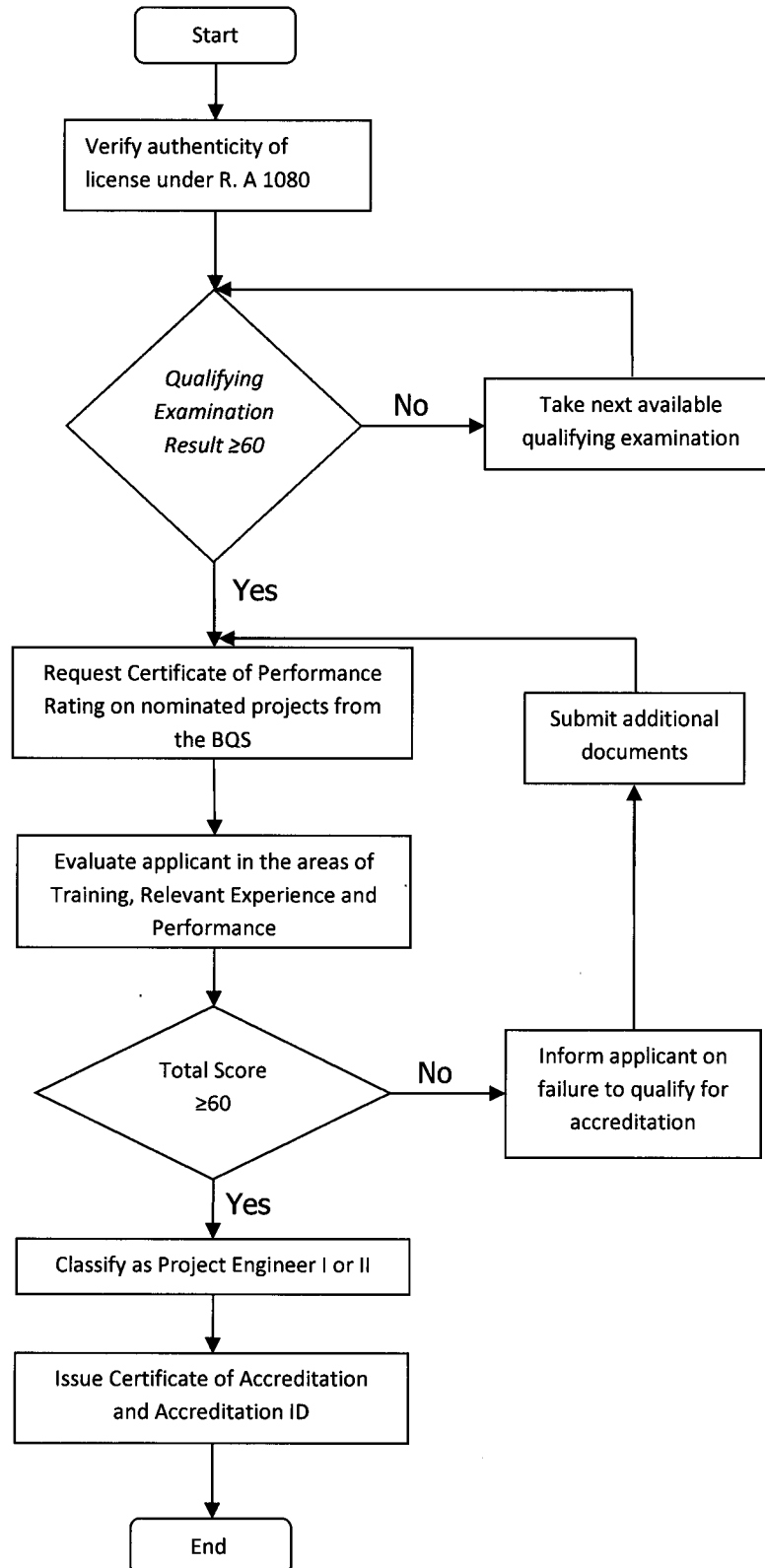
1. One (1) point for completing equivalent training on any one (1) of the following:
  - 1.1 On-the-Job Training on Materials Testing (with duration of 176 hours).
  - 1.2 Materials Quality Control in Project Implementation (with duration of 176 hours).
2. One (1) point each for completing equivalent training on any three (3) of the following trainings/seminars:
  - 2.1 Materials Quality Control in Project Implementation (with duration of less than 176 hours)
  - 2.2 Materials Testing Procedures
  - 2.3 Materials Engineering and Quality Control
  - 2.4 Soil Engineering
  - 2.5 Asphalt Technology
  - 2.6 Concrete Technology
  - 2.7 Project Quality Assurance

**C. Project Management and Supervision 2 points**

1. One (1) point for completing equivalent training on Project Management by PERT/CPM or Precedence Diagram Method (PDM).
2. One (1) point for completing equivalent training on any of the following trainings/seminars:
  - 2.1 Implementing Rules and Regulation on RA 9184 (Government Procurement Reform Act)
  - 2.2 Project Assessment and Documentation
  - 2.3 Infrastructure Planning and Programming Procedures
  - 2.4 Construction Supervision and Management
  - 2.5 Project Management
  - 2.6 Construction Planning & Scheduling w/ Computer-Aided Engineering/Computer Aided Design and Drafting
  - 2.7 Supervision Management for Field Engineers
  - 2.8 DPWH Project Development and Implementation
  - 2.9 Networking/Scheduling (PERT/CPM or PDM)

## ANNEX B

### PROCESS FLOW IN ACCREDITATION OF PROJECT ENGINEER





**ANNEX C**

**Department of Public Works and Highways** DPWH-BQS-QSAD-14-F001-Rev.001

**ACCREDITATION OF CONTRACTORS' AND CONSULTANTS' PROJECT ENGINEERS  
APPLICATION FORM FOR EXAMINATION**

**Date of Examination** \_\_\_\_\_

**APPLICATION NUMBER**

--	--	--	--	--	--

Paste here your recent  
passport size colored  
picture in white  
background with  
complete name tag

**NAME:** \_\_\_\_\_  
(Last Name) (First Name) (Middle Name)

**MAIDEN NAME (if applicable):** \_\_\_\_\_

**PRC LICENSE NO.:** \_\_\_\_\_ **VALIDITY PERIOD:** \_\_\_\_\_

**HOME ADDRESS:** \_\_\_\_\_

**CURRENT POSITION TITLE:** \_\_\_\_\_

**CONTRACTORS'/CONSULTANTS' BUSINESS NAME:** \_\_\_\_\_

**CONTRACTORS'/CONSULTANTS' BUSINESS ADDRESS:** \_\_\_\_\_

**OFFICE TEL. NO.:** \_\_\_\_\_ **HOME/MOBILE NO.:** \_\_\_\_\_

**NATIONALITY:** \_\_\_\_\_ **SEX:** \_\_\_\_\_ **CIVIL STATUS:** \_\_\_\_\_

**BIRTHDATE (MM/DD/YYYY):** \_\_\_\_\_ **E-MAIL ADDRESS:** \_\_\_\_\_

**PREFERRED EXAMINATION VENUE:** ☐ **MANILA** ☐ **CEBU** ☐ **DAVAO**

I certify that the information supplied in this application is accurate to the best of my knowledge. I understand that if any information is determined to be inaccurate, my application will be denied.

\_\_\_\_\_  
Date

\_\_\_\_\_  
Signature over printed Name



**ANNEX D**

**Department of Public Works and Highways** DPWH-BQS-QSAD-14-F003-Rev.000

**ACCREDITATION OF CONTRACTORS' AND CONSULTANTS' PROJECT ENGINEERS  
APPLICATION FORM FOR ACCREDITATION**

**LAST NAME:** \_\_\_\_\_

**FIRST NAME:** \_\_\_\_\_

**MIDDLE NAME:** \_\_\_\_\_

**MAIDEN NAME (if applicable):** \_\_\_\_\_

Paste here your recent  
passport size colored  
picture in white  
background with  
complete name tag

**PRC LICENSE NO.:** \_\_\_\_\_ **VALIDITY PERIOD:** \_\_\_\_\_

**HOME ADDRESS:** \_\_\_\_\_  
\_\_\_\_\_

**CURRENT POSITION TITLE:** \_\_\_\_\_

**CONTRACTORS'/CONSULTANTS' BUSINESS NAME:**  
\_\_\_\_\_

**CONTRACTORS'/CONSULTANTS' BUSINESS ADDRESS:**  
\_\_\_\_\_  
\_\_\_\_\_

**OFFICE TEL. NO.:** \_\_\_\_\_ **HOME/MOBILE NO.:** \_\_\_\_\_

**NATIONALITY:** \_\_\_\_\_ **SEX:** \_\_\_\_\_ **CIVIL STATUS:** \_\_\_\_\_

**BIRTHDATE (MM/DD/YYYY):** \_\_\_\_\_ **E-MAIL ADDRESS:** \_\_\_\_\_

I certify that the information supplied in this application is accurate to the best of my knowledge. I understand that if any information is determined to be inaccurate, my application will be denied.

\_\_\_\_\_  
Date

\_\_\_\_\_  
Signature over printed Name

**ANNEX E**



**Department of Public Works and Highways** DPWH-BQS-QSAD-14-F002-Rev.001

**ACCREDITATION OF CONTRACTORS' AND CONSULTANTS'  
PROJECT ENGINEERS  
APPLICATION FORM FOR THE RENEWAL OF CERTIFICATE**

**CONTRACTOR'S/ CONSULTANT'S  
ACCREDITATION NUMBER**

--	--	--	--

☐

**Project Engineer II**

☐

**Project Engineer I**

Paste here your recent  
passport size colored  
picture in white  
background with  
complete name tag

**NAME:** \_\_\_\_\_  
(Last Name) (First Name) (Middle Name)

**MAIDEN NAME (if applicable):** \_\_\_\_\_

**PRC LICENSE NO.:** \_\_\_\_\_ **VALIDITY PERIOD:** \_\_\_\_\_

**HOME ADDRESS:** \_\_\_\_\_

**CURRENT POSITION TITLE:** \_\_\_\_\_

**CONTRACTORS'/CONSULTANTS' BUSINESS NAME:** \_\_\_\_\_

**CONTRACTORS'/CONSULTANTS' BUSINESS ADDRESS:** \_\_\_\_\_

**OFFICE TEL. NO.:** \_\_\_\_\_ **HOME/MOBILE NO.:** \_\_\_\_\_

**NATIONALITY:** \_\_\_\_\_ **SEX:** \_\_\_\_\_ **CIVIL STATUS:** \_\_\_\_\_

**BIRTHDATE (MM/DD/YYYY):** \_\_\_\_\_ **E-MAIL ADDRESS:** \_\_\_\_\_

I certify that the information supplied in this application is accurate to the best of my knowledge. I understand that if any information is determined to be inaccurate, my application will be denied.

\_\_\_\_\_  
Date

\_\_\_\_\_  
Signature over printed Name