



Republic of the Philippines
DEPARTMENT OF PUBLIC WORKS AND HIGHWAYS
OFFICE OF THE SECRETARY
Manila

0917.13 DPWH
02-05-2016

25 JAN 2016

DEPARTMENT ORDER)
NO. **39**)
Series of 2016)

SUBJECT: GUIDELINES ON LOAD POSTING OF BRIDGES

For the purpose of preventing premature deterioration and damage or preclude any danger of collapse of bridges along national roads due to truck overloading and as a means of preserving bridges, the following guidelines are hereby issued for the implementation and compliance of all concerned:

1. The Regional Office concerned shall conduct condition inspection of all bridges in their area of responsibility and shall be responsible in the determination of the live load capacity as well as its posting.
2. Load Rating (load capacity determination) shall be required for all bridges exhibiting progressive or advanced stage of deterioration, bridges damaged by calamities and bridges that have been rated as being in *poor* or *bad* condition based on data from the Bridge Management System as per result of the recent actual inspection conducted by the Regional or District Office as deemed necessary.
3. All derated permanent bridges along national roads shall be provided with the informative sign on live load limit for two (2), three (3) and five (5) axle vehicles to be posted on conspicuous place within 5.0m before the abutment at both approaches.
4. As a guide and to have uniform procedure and parameters in the determination of the live load limits, the Manual for Load Rating of Bridges (MLRB), 3rd Edition issued per D.O. 94 Series of 2014 shall be used.
5. For other types of bridges not included in the MLRB User's Manual, the determination of the live load capacity shall be done by any appropriate method for reinforced concrete or steel structures as the case may be but should also conform to the current DPWH and AASHTO Standard Specifications.
6. The live load limit signs shall be in accordance with the attached standard plan (*Annex "A"*) as adopted from the MLRB.

7. The Planning Service, this Department shall provide the necessary program and appropriate funds needed for this purpose.

This Order shall supersede Memorandum Order No. 1 dated January 11, 1991, Department Order No. 66 Series of 2009 and other issuances inconsistent herewith and shall take effect immediately.



ROGELIO L. SINGSON

Secretary

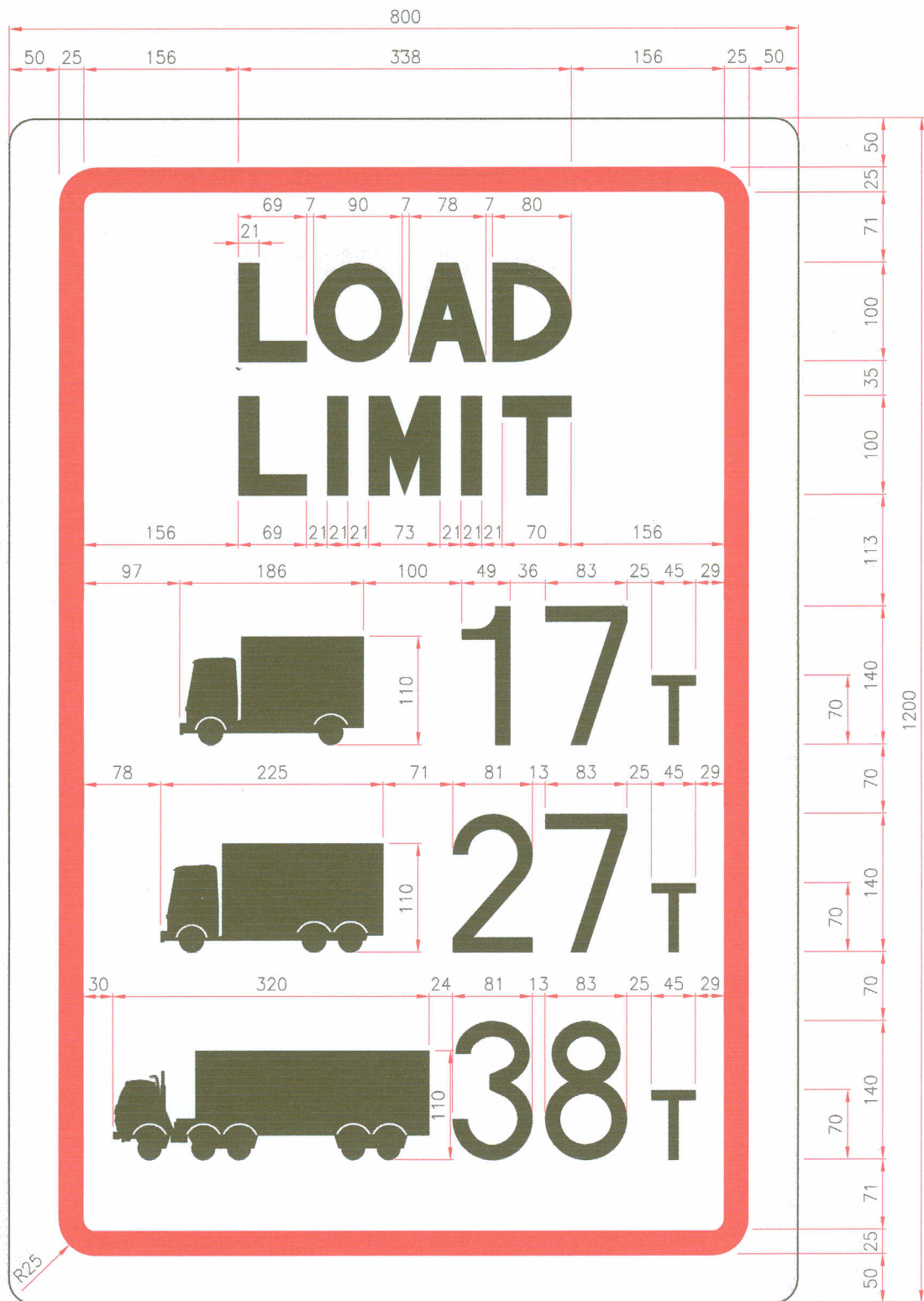
Department of Public Works and Highways
Office of the Secretary



WIN6R01226

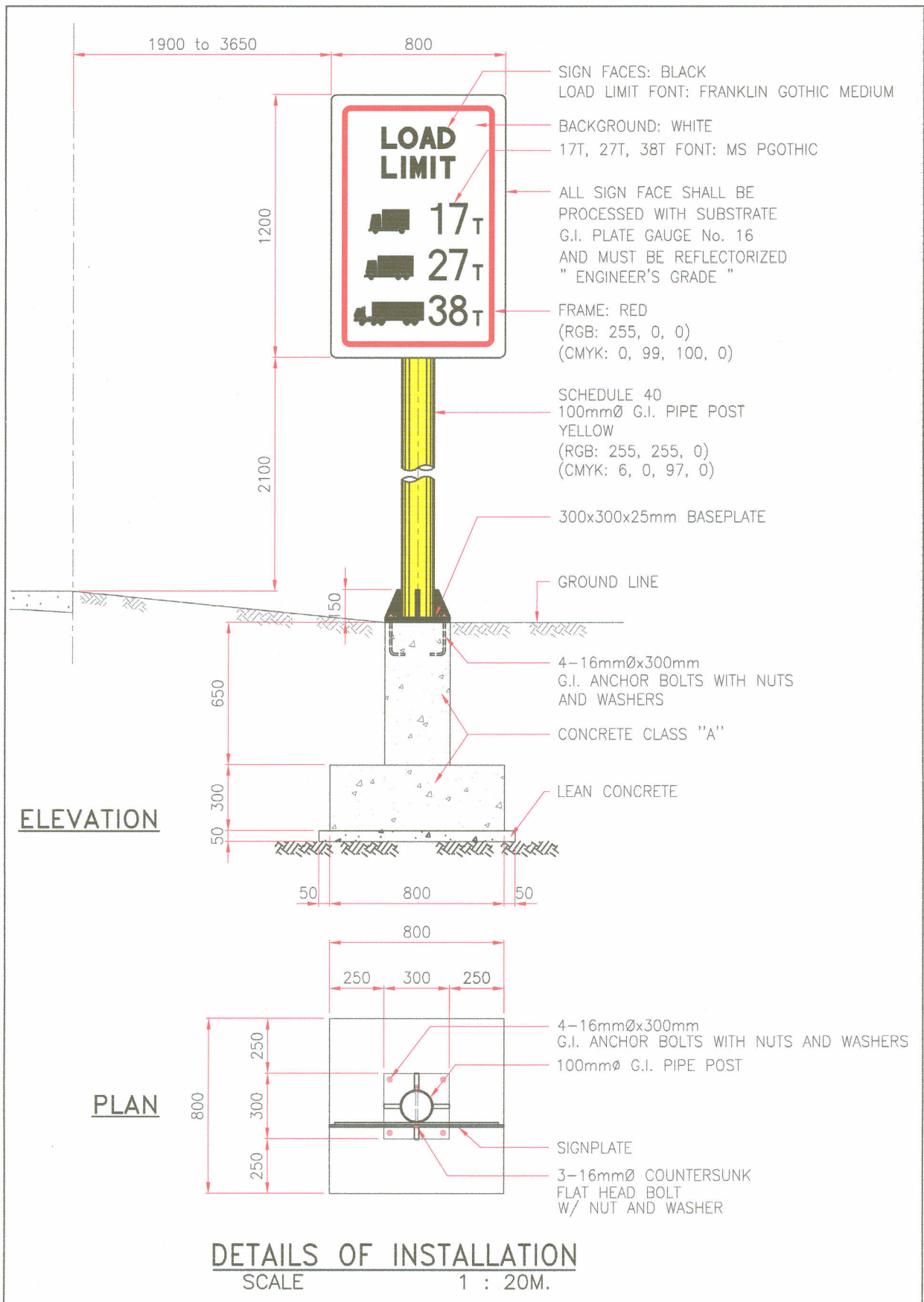
5.1.4 WLA/ECM

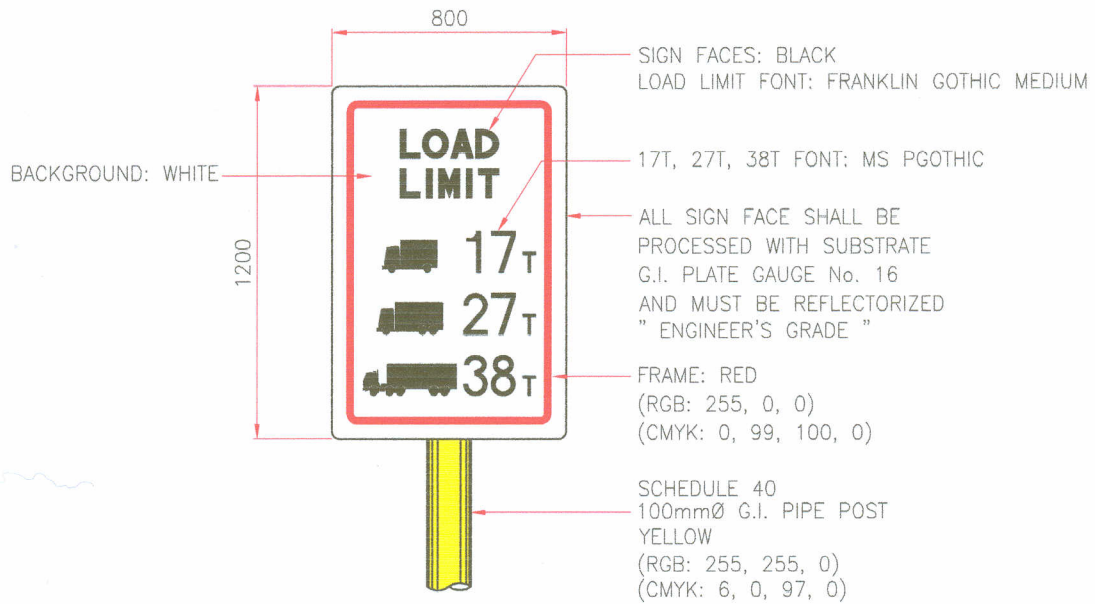
ANNEX "A"



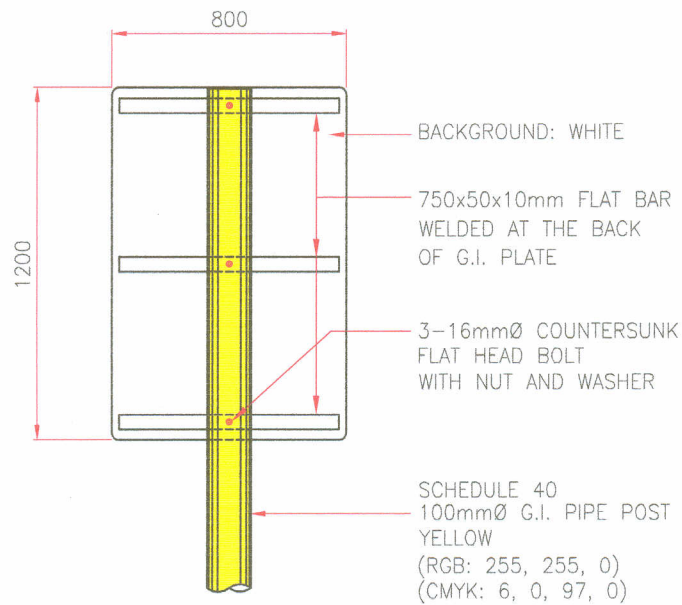
DETAIL OF SERIES 120DN LETTERS & NUMERICAL DIMENSIONS
SCALE 1 : 5M.

NOTE: THE ACTUAL LOAD RATING SHALL BE BASED FROM THE RESULT OF THE ANALYSIS



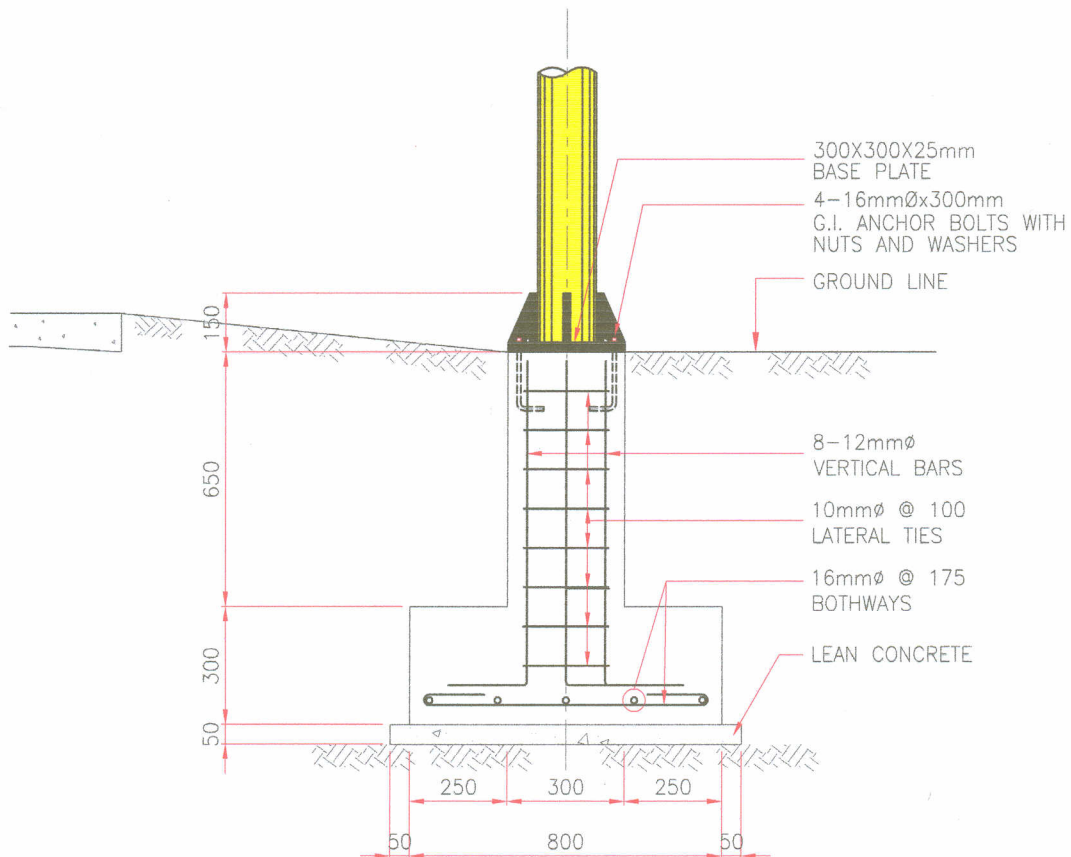


FRONT VIEW

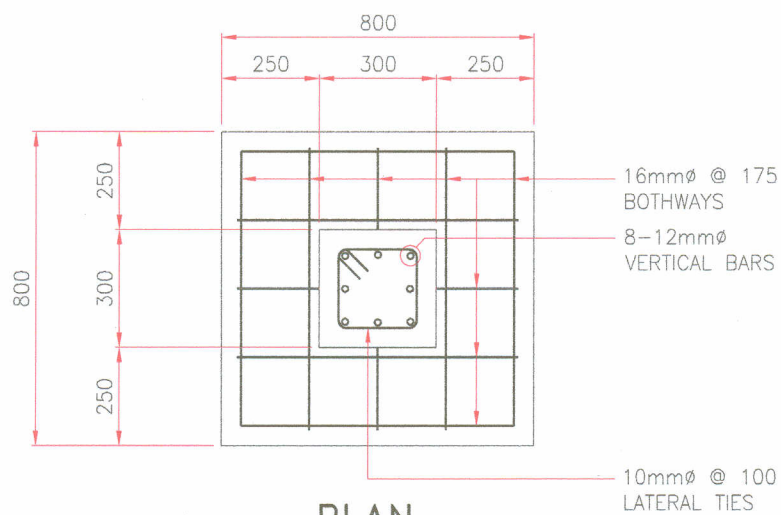


REAR VIEW

DETAILS OF INSTALLATION
SCALE 1 : 20M.



ELEVATION



PLAN

DETAILS OF PEDESTAL
SCALE 1 : 15M.