

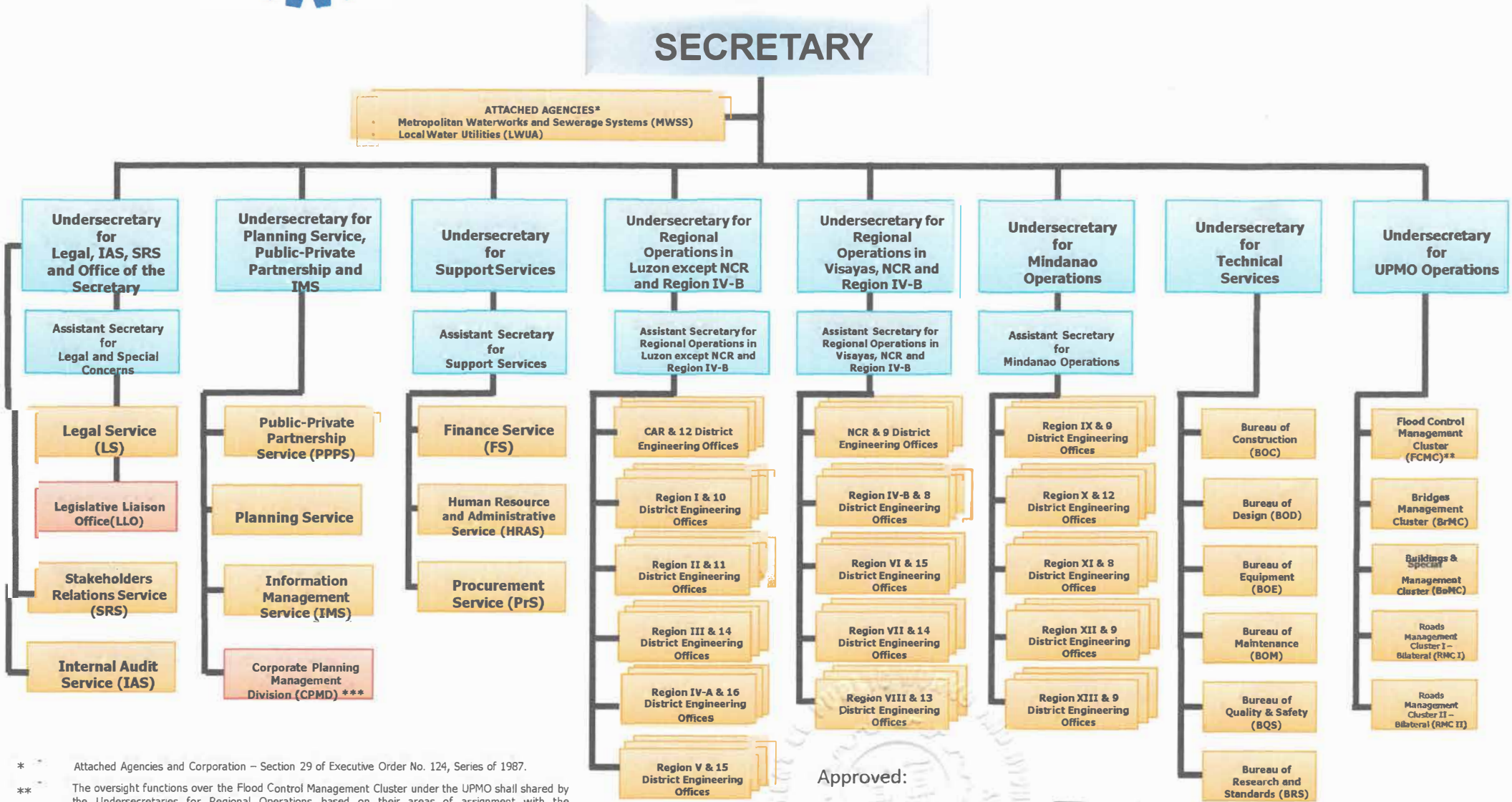


670

Department of Public Works and Highways

Organizational Chart

Per Department Order No. 108, s. 2020, dated November 11, 2020



* Attached Agencies and Corporation – Section 29 of Executive Order No. 124, Series of 1987.

** The oversight functions over the Flood Control Management Cluster under the UPMO shall be shared by the Undersecretaries for Regional Operations based on their areas of assignment with the Undersecretary for UPMO Operations as defined in D.O. 87, S. 2016.

*** Department Order No. 141, S. 2017 Reconstitution of the Performance Governance System Committee. "The Corporate Planning and Management Division (CPMD), under the Office of the Secretary shall be responsible for corporate/strategic planning is hereby placed under the direct supervision and control of the Chairperson of the PGS Committee."

Approved:

MARK A. VILLAR
 Secretary