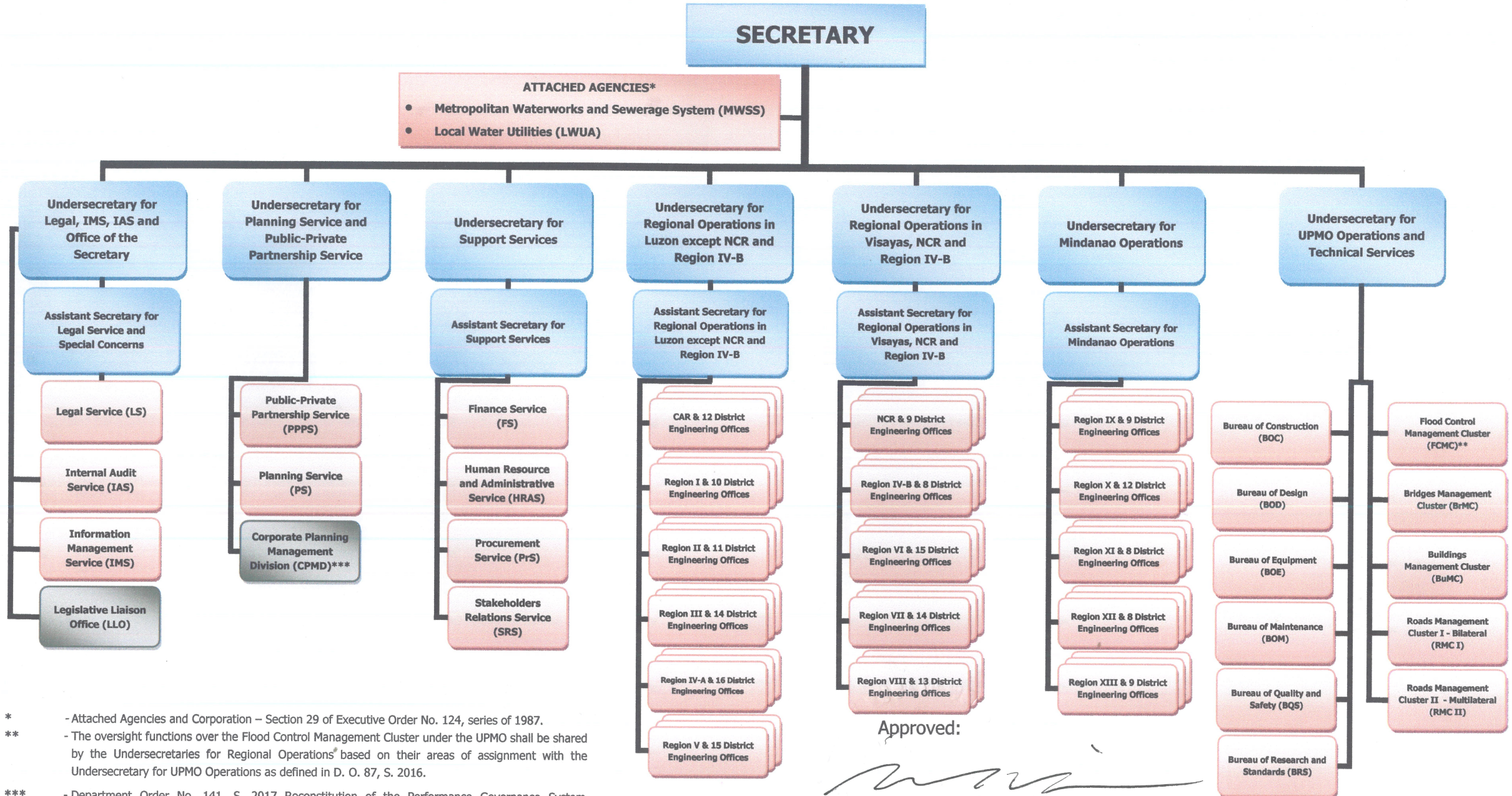




Department of Public Works and Highways

Organizational Chart

Per Department Order No. 17, s. 2020, dated January 21, 2020



Approved:

MARK A. VILLAR
Secretary

Department of Public Works and Highways
Office of the Secretary



WIN0A04224

- * - Attached Agencies and Corporation – Section 29 of Executive Order No. 124, series of 1987.
- ** - The oversight functions over the Flood Control Management Cluster under the UPMO shall be shared by the Undersecretaries for Regional Operations* based on their areas of assignment with the Undersecretary for UPMO Operations as defined in D. O. 87, S. 2016.
- *** - Department Order No. 141, S. 2017 Reconstitution of the Performance Governance System Committee. "The Corporate Planning and Management Division (CPMD), under the Office of the Secretary and responsible for corporate/strategic planning, is hereby placed under the direct supervision and control of the Chairperson of the PGS Committee."