

REPUBLIC OF THE PHILIPPINES
DEPARTMENT OF PUBLIC WORKS AND HIGHWAYS
CAPIZ 2ND DISTRICT ENGINEERING OFFICE
OFFICE OF THE DISTRICT ENGINEER
REGION VI
WESTERN VISAYAS
BRGY. CONSOLACION, DUMALAG, CAPIZ

PLANS FOR THE PROJECT OF
REPAIR / MAINTENANCE OF OLD PANAY RIVER REVETMENT 1 (F040010PN)
BRGY. BITOON, ILAWOD, CUARTERO, CAPIZ
STA. 0+000 - STA. 0+192



DPWH

Republic of the Philippines
DEPARTMENT OF PUBLIC WORKS AND HIGHWAYS
Capiz 2nd District Engineering Office
Dumalag, Capiz

PREPARED BY:

JONNIE A. TUBLON
CONST. & MAINT. FOREMAN

SUBMITTED BY:

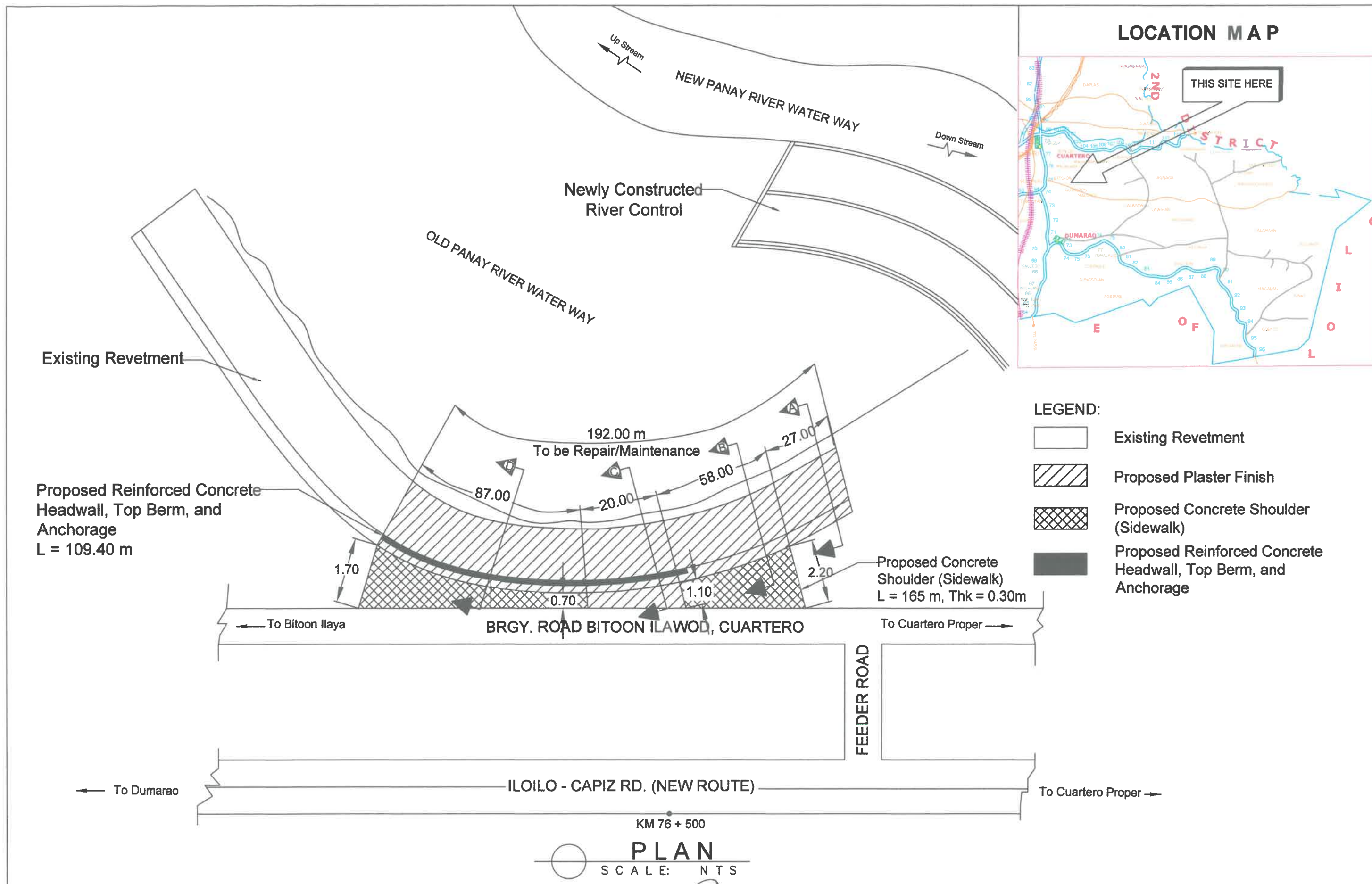
MYLENE D. VILLABETO
CHIEF MAINTENANCE SECTION

RECOMMENDING APPROVAL:

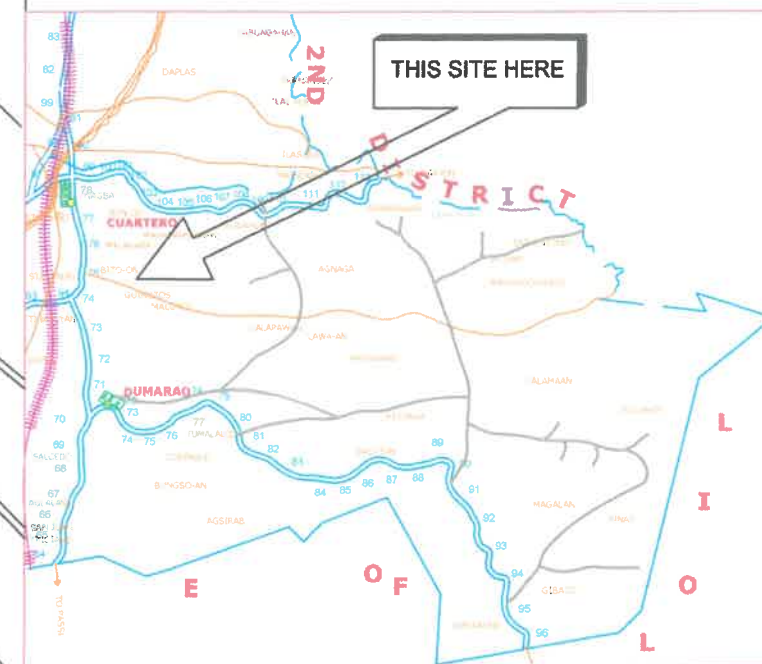
SALVADOR J. BIPALDA
AEC - ASSISTANT DISTRICT ENGINEER

APPROVED BY:

GERARDO G. PARRA, JR.
OIC - DISTRICT ENGINEER



LOCATION MAP



LEGEND:

- Existing Revetment
- Proposed Plaster Finish
- Proposed Concrete Shoulder (Sidewalk)
- Proposed Reinforced Concrete Headwall, Top Berm, and Anchorage



DPWH
Republic of the Philippines
DEPARTMENT OF PUBLIC WORKS AND HIGHWAYS
Capiz 2nd District Engineering Office
Dumalag, Capiz

PROJECT & LOCATION
PLANS FOR THE PROJECT OF
REPAIR/MAINTENANCE OF OLD PANAY RIVER REVETMENT 1 (F040010PN)
BRGY. BITOON, ILAWOD, CUARTERO, CAPIZ
STA. 0+000 - STA. 0+192

SHEET CONTENTS :
- PLAN
- LOCATION MAP

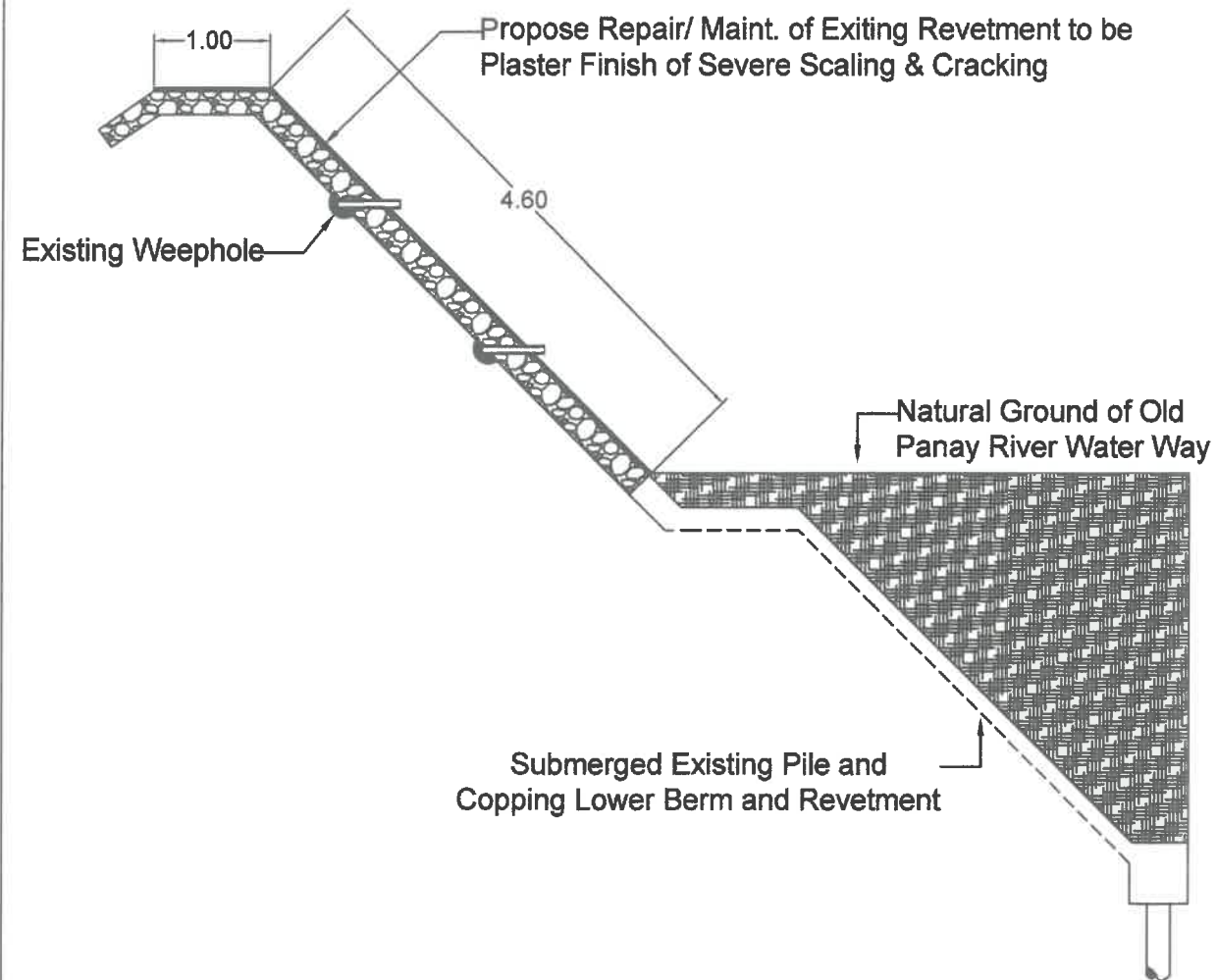
PREPARED BY:
JONNIE A. DUBLON
CONST. & MAINT. FOREMAN

CHECKED BY:
MYLENE D. VILLABETO
CHIEF MAINTENANCE SECTION

RECOMMENDING APPROVAL:
SALVADOR T. RIPALDA
DIST. ASSISTANT DISTRICT ENGINEER

APPROVED BY:
GERARDO G. PARRA, JR.
DIST. ENGINEER

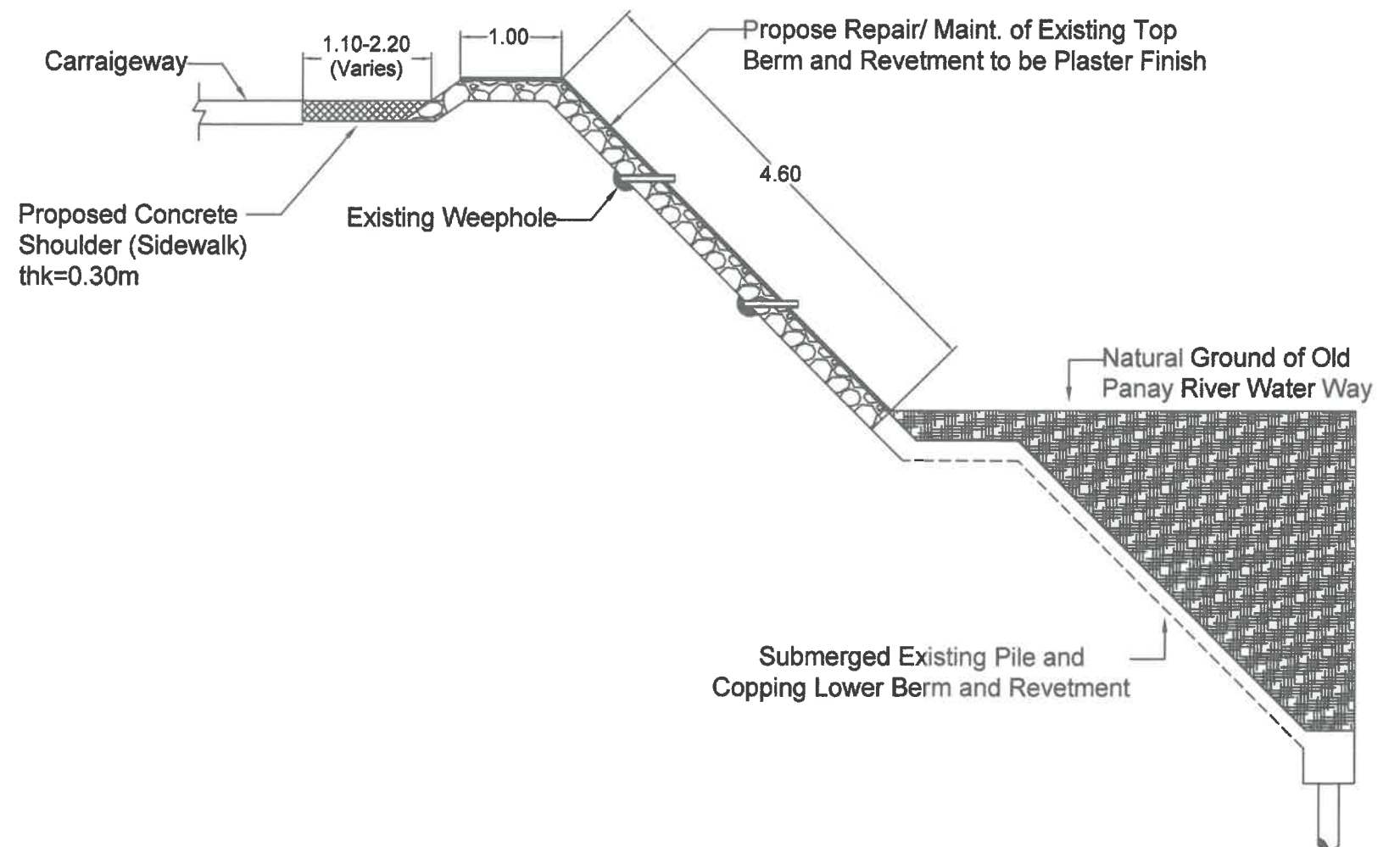
SET NO. : SHT NO. :
1
4



TYPICAL CROSS SECTION DETAIL AT SECTION "A"

SCALE

1 : 30 m.



TYPICAL CROSS SECTION DETAIL AT SECTION "B"

SCALE

1 : 30 m.



DPWH

Republic of the Philippines
DEPARTMENT OF PUBLIC WORKS AND HIGHWAYS
Capiz 2nd District Engineering Office
Dumalag, Capiz

PROJECT & LOCATION

PLANS FOR THE PROJECT OF
REPAIR/MAINTENANCE OF OLD PANAY RIVER REVETMENT 1 (F040010PH)
BRGY. BITOON, ILAWOD, CUARTERO, CAPIZ
STA. 0+000 - STA. 0+192

SHEET CONTENTS :

- TYPICAL CROSS SECTION DETAIL AT SECTION "A"
- TYPICAL CROSS SECTION DETAIL AT SECTION "B"

SUPPLIED BY :

JONNIE A. DUBLON
CONST. & MAINT. FOREMAN

AUTO CADD
JAMES JOSEPH & EL YRA
Page 1

PREPARED BY:

JONNIE A. DUBLON
CONST. & MAINT. FOREMAN

CHECKED BY:

MYLENE D. VILLABETO
CHIEF MAINTENANCE SECTION

RECOMMENDING APPROVAL:

SALVADOR T. RIPALDA
DIC - ASSISTANT DISTRICT ENGINEER

APPROVED BY:

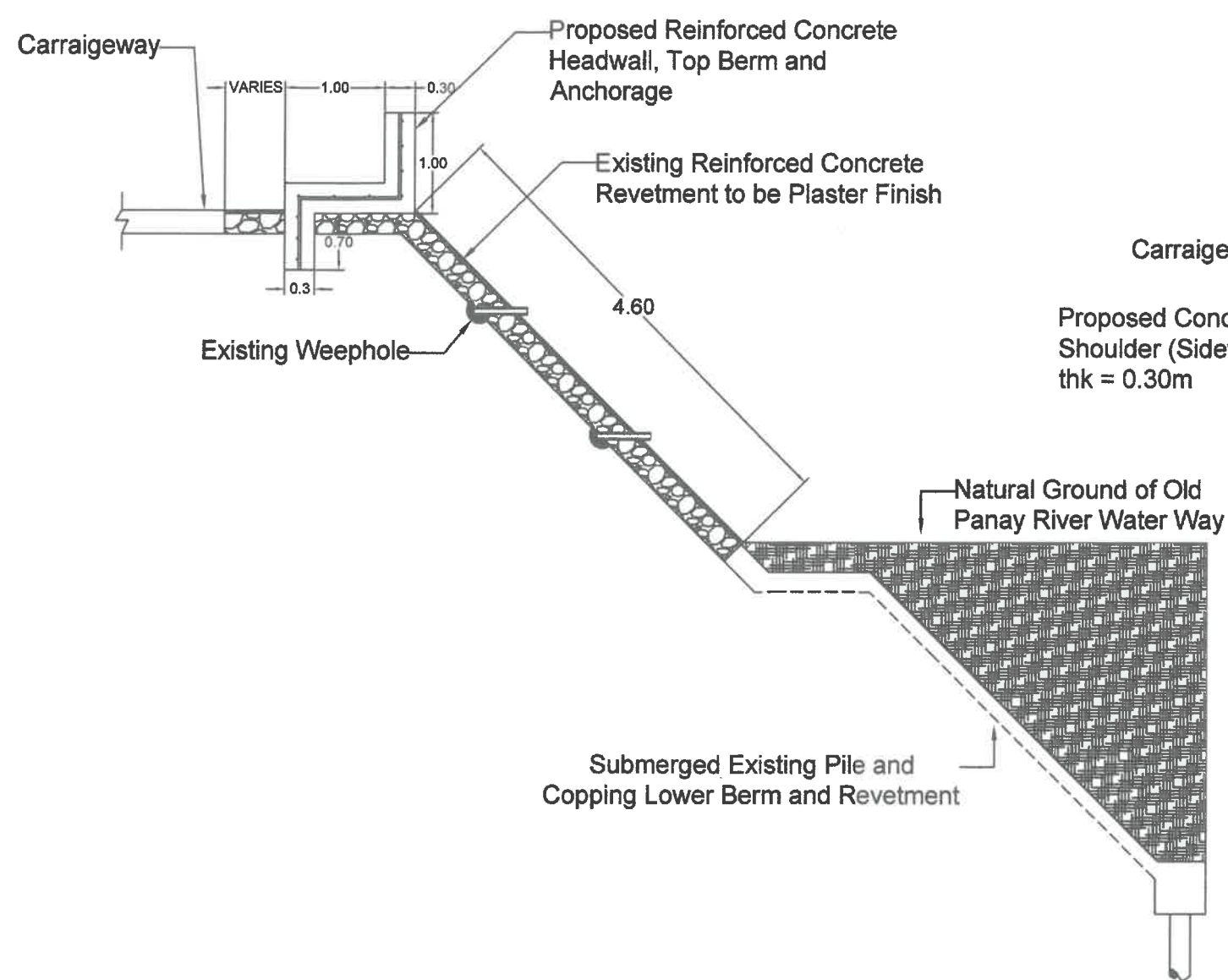
GERARDO G. PARRA, JR.
DIC - DISTRICT ENGINEER

SET NO. :

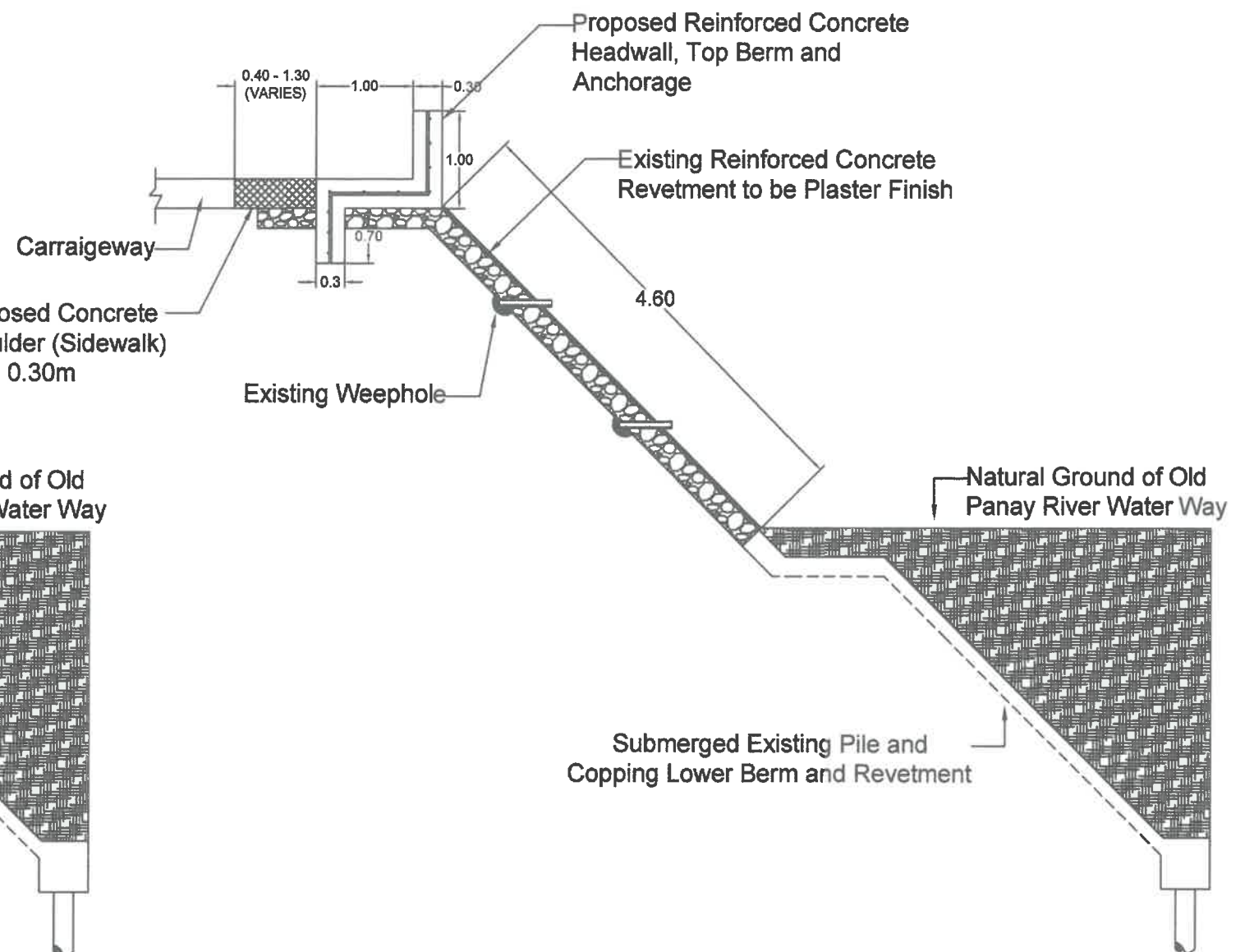
2

SHT NO. :

4



TYPICAL CROSS SECTION DETAIL AT SECTION "C"
SCALE 1 : 30 m.



TYPICAL CROSS SECTION DETAIL AT SECTION "D"
SCALE 1 : 30 m.



DPWH

Republic of the Philippines
DEPARTMENT OF PUBLIC WORKS AND HIGHWAYS
Capiz 2nd District Engineering Office
Dumalag, Capiz

PROJECT & LOCATION

PLANS FOR THE PROJECT OF
REPAIR/MAINTENANCE OF OLD PANAY RIVER REVETMENT 1 (F040010PN)
BRGY. BITOON, ILAWOD, CUARTERO, CAPIZ
STA. 0+000 - STA. 0+192

SHEET CONTENTS :

- TYPICAL CROSS SECTION DETAIL AT SECTION "C"
- TYPICAL CROSS SECTION DETAIL AT SECTION "D"

DESIGNED BY:
JONNIE A. DUBLON
CONST. & MAINT. FOREMAN
CHECKED BY:
FABIAN JOSEPH A. ELVIRA
ENGINEER

PREPARED BY:

JONNIE A. DUBLON
CONST. & MAINT. FOREMAN

CHECKED BY:

MYLENE D. VILLABETO
CHIEF MAINTENANCE SECTION

RECOMMENDING APPROVAL:

SALVADOR T. RIPALDA
OIC - ASSISTANT DISTRICT ENGINEER

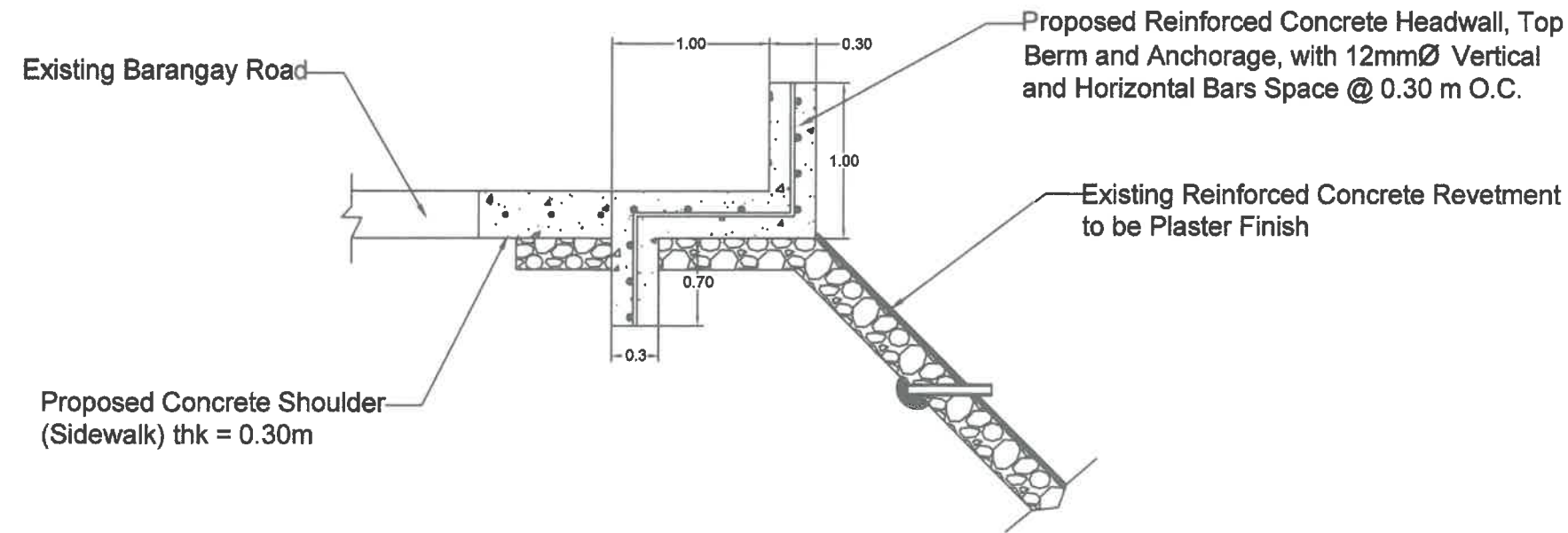
APPROVED BY:

GERARDO G. PARRA, JR.
OIC - DISTRICT ENGINEER

SET NO. : SHT NO. :



3
4

SUMMARY OF QUANTITIES			
ITEM NO.	DESCRIPTION	UNIT	QUANTITY
PART A.	OTHER GENERAL REQUIRMENTS		
B.5 (1)	Project Billboard	ea.	2.00
B.7(1)	Occupational Safety and Health	l.s.	1.00
B.9 (1)	Mobilization / Demobilization	l.s.	1.00
PART L - A.	EARTHWORKS		
801(1)	Removal of Structure and Obstruction (Concrete)	l.s	1.00
1700(1)	Clearing and Grubbing	m ²	1,968.00
1701(1)	Unsuitable Excavation	m ³	366.00
1702(1)a	Structure Excavation	m ³	90.42
PART L - B.	BANK AND SLOPE PROTECTION WORKS		
601(1)	Sidewalk	m ²	192.00
1027(1)	Cement Plaster Finish	m ²	883.20
1712(1)	Concrete, Slope Protection	m ³	78.76



TYPICAL CROSS SECTION DETAIL OF REINFORCED
CONCRETE HEADWALL, TOP BERM, AND ANCHORAGE

SCALE NTS

 DPWH Republic of the Philippines DEPARTMENT OF PUBLIC WORKS AND HIGHWAYS Capiz 2nd District Engineering Office Dumalag, Capiz	PROJECT & LOCATION PLANS FOR THE PROJECT OF REPAIR/MAINTENANCE OF OLD PANAY RIVER REVETMENT 1 (F040010PN) BRGY. BITOON, ILAWOD, CUARTERO, CAPIZ STA. 0+000 - STA. 0+102	SHEET CONTENTS : - SUMMARY OF QUANTITIES - TYPICAL CROSS SECTION DETAIL OF REINFORCED CONCRETE HEADWALL, TOP BERM, AND ANCHORAGE	SUPERSEDED BY: JONNIE A. DUBLON CONST. & MAINT. FOREMAN AUTO-CHECKED BY: MARION JOSEPH A. ELYRA Engineer I	PREPARED BY: JONNIE A. DUBLON CONST. & MAINT. FOREMAN	CHECKED BY: MYLENE D. VILLABETO CHIEF MAINTENANCE SECTION	RECOMMENDING APPROVAL: SALVADOR T. RIPALDA OIC - ASSISTANT DISTRICT ENGINEER	APPROVED BY: GERARDO G. PARRA, JR. OIC - DISTRICT ENGINEER	SET NO. : 	SHT NO. : 