



REPUBLIC OF THE PHILIPPINES
DEPARTMENT OF PUBLIC WORKS AND HIGHWAYS
REGION XI
DAVAO DEL NORTE
2ND DISTRICT ENGINEERING OFFICE
TAGUM CITY


FY 2025 BIP
DETAILED ENGINEERING DESIGN PLAN FOR
CONSTRUCTION of MULTI-PURPOSE BUILDING
in BARANGAY SAN VICENTE, PANABO CITY, DAVAO DEL NORTE
PROJECT NAME
BARANGAY SAN VICENTE, PANABO CITY, DAVAO DEL NORTE
LOCATION

SUBMITTED:



JEZABEL E. TULING, MPA
CHIEF, PLANNING AND DESIGN SECTION

DATE:

RECOMMENDED:


GARRY E. VERANO
OFFICER - IN - CHARGE
OFFICE OF THE ASSISTANT DISTRICT ENGINEER
DATE:

APPROVED:


ARTURO P. LONGYAPON
DISTRICT ENGINEER

DATE:

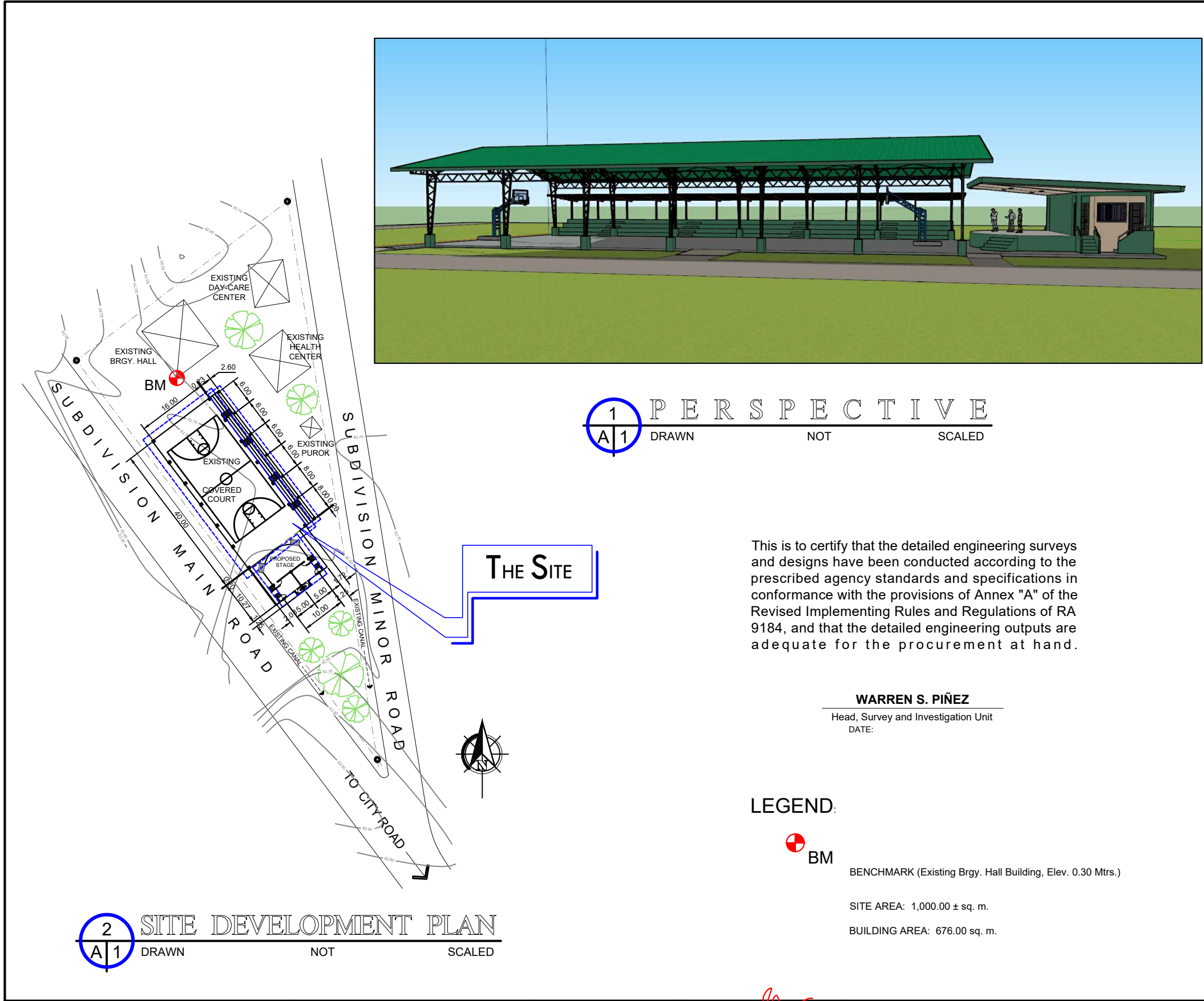
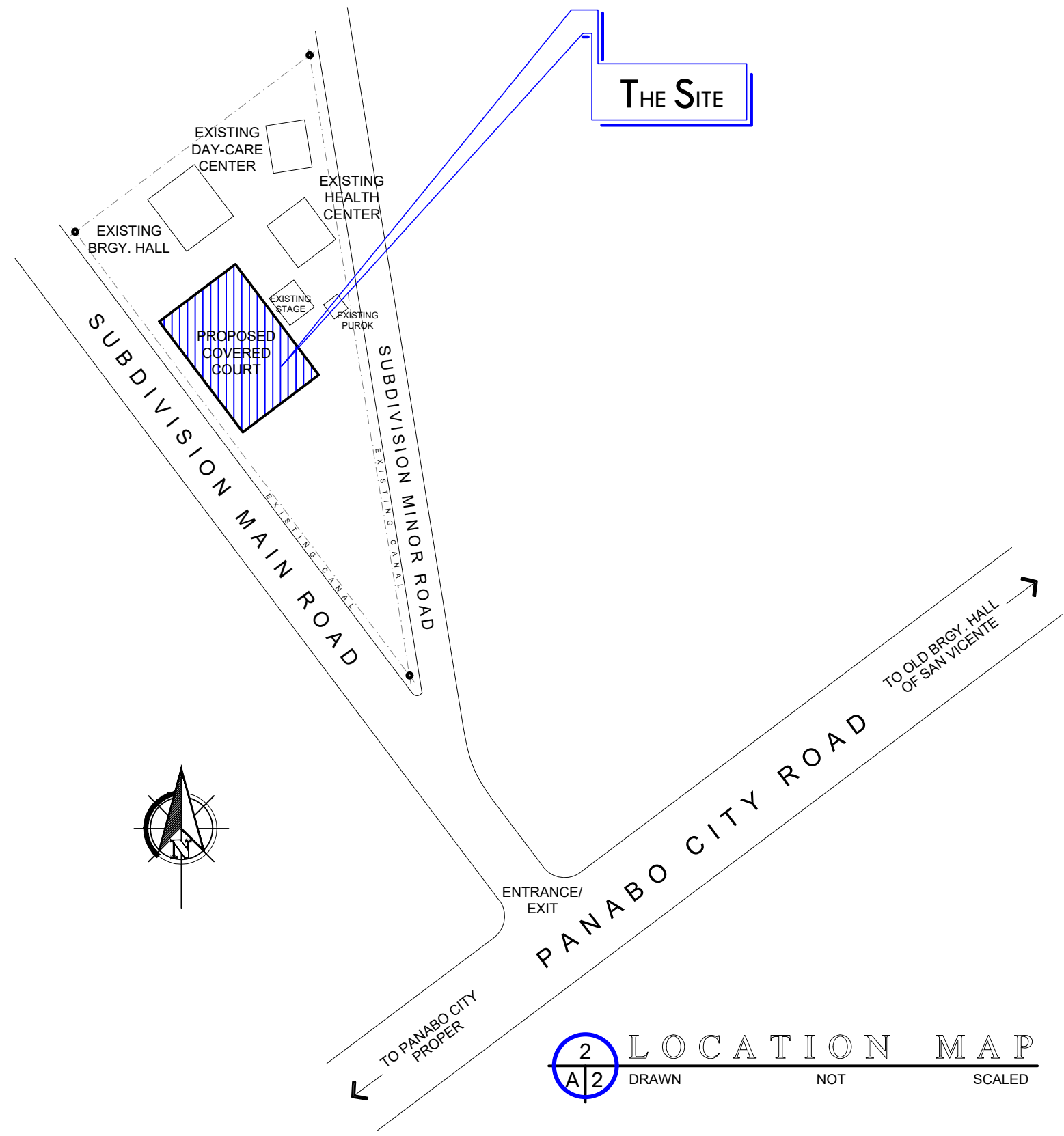
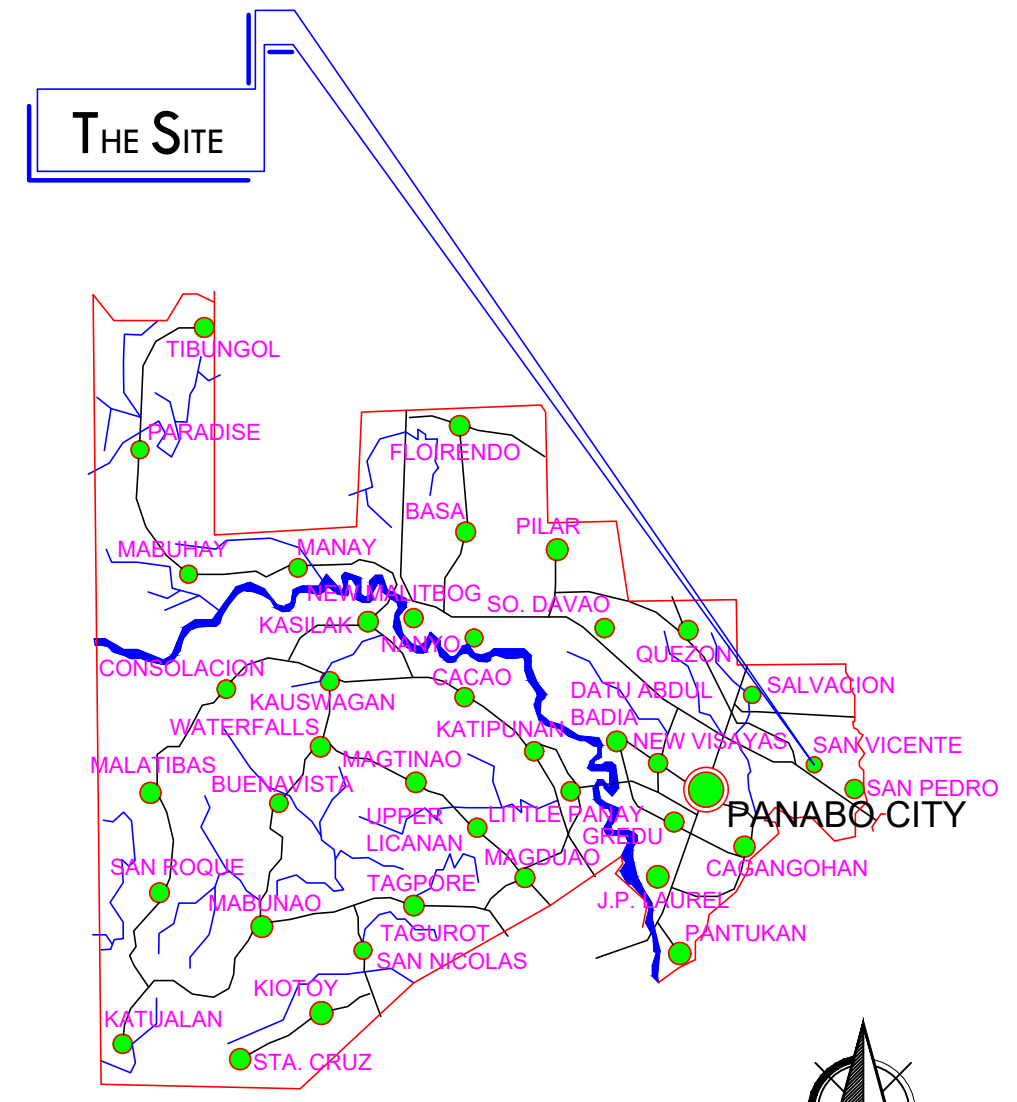



TABLE OF CONTENTS		REPUBLIC OF THE PHILIPPINES OFFICE OF THE BUILDING OFFICIAL PANABO CITY DISTRICT / CITY / MUNICIPALITY
ARCHITECTURAL		LAND USE & ZONING
A1	PERSPECTIVE, SITE DEVELOPMENT PLAN, TABLE OF CONTENTS	
A2	LOCATION PLAN, VICINITY MAP	
A3	SUMMARY OF QUANTITIES	
A4	FLOOR PLAN, SCHEDULE OF FINISH	LINE AND GRADE
A5	TYPICAL FRONT & REAR ELEVATION, SPOT DETAIL, TYPICAL SIDE ELEVATION, SCHEDULE OF FINISH, ROOF SCHEDULE	
A6	ROOF PLAN, ROOF SCHEDULE	
A7	LONGITUDINAL SECTION, FLASHING DETAIL, SCHEDULE OF FINISH, ROOF SCHEDULE	ARCHITECTURAL
STRUCTURAL		
S1	GENERAL CONSTRUCTION NOTES	
S2	GENERAL CONSTRUCTION NOTES	
S3	GENERAL CONSTRUCTION NOTES & SPECIFICATIONS	CIVIL / STRUCTURAL
S4	FOUNDATION PLAN, SCHEDULE OF FINISH	
S5	F1P1 DETAIL, WELDING SCHEDULE FOR 3-HINGED ARCH, SECTION DETAIL, ISOMETRIC DETAIL, ANCHOR BOLT DETAIL, WELDING NOTES & SPECIFICATIONS	
S6	ROOF FRAMING PLAN	SANITARY
S7	FASCIA DETAIL, SPOT DETAIL, SPOT DETAIL, STEEL STRUT DETAIL, PURLING CONNECTION DETAIL	
S8	3-HINGED ARCH SECTION DETAIL, SPOT DETAIL, SPOT DETAIL, ANGULAR SPICE PLATE DETAIL, STIFFENER & RIDGE ROLL DETAIL, RIDGE PLATE DETAIL	
S9	TYPICAL PAVEMENT SECTION, DETAIL A-B, DOWEL BAR DETAIL, PAVEMENT PLAN, SECTION Y-Y, SECTION X-X	PLUMBING
S10	ROOF PANEL SIDE LAP DETAIL, TKSOREW SPACING, ISOMETRIC VIEW OF CONNECTION OF ROOFING TO PURLING, ROOFING CONNECTION DETAIL, SPOT DETAIL, SPOT DETAIL	
S11	TYPICAL SIDE ELEVATION, FRONT ELEVATION, PLAN, SECTION, FOOTING/PEDESTAL DETAIL, SECTION, DETAIL PLAN, SECTION, SPOT DETAILS, BASKETBALL BOARD ELEVATION	ELECTRICAL
S12	SAFETY AND HEALTH FOR BUILDING	
S13	CONSTRUCTION SAFETY SIGNAGE FOR BUILDING CONSTRUCTION	
S14	DPWH STANDARD PROJECT BILLBOARD COA BILLBOARD	
S15	DPWH STANDARD PROJECT BILLBOARD COA BILLBOARD FRAMING DETAIL	ELECTRONICS
ELECTRICAL		
E1	ELECTRICAL LAY-OUT PLAN, CONVENIENCE OUTLET & SWITCH MOUNTING DETAIL, LIGHT FIXTURE MOUNTING DETAIL	
E2	RISER DIAGRAM, GENERAL NOTES, SCHEDULE OF LOADS, LEGEND, ELECTRICAL SITE DEVELOPMENT PLAN	MECHANICAL
PLUMBING		
P1	PLUMBING NOTES, PLUMBING LEGEND, PLUMBING VICINITY MAP, PLUMBING SITE DEVELOPMENT PLAN	
P2	STORM DRAIN LAYOUT PLAN, GUTTER DETAIL	
P3	ISOMETRIC PLAN (STORM DRAIN LAYOUT), CATCH BASIN DETAIL	GEODETIC

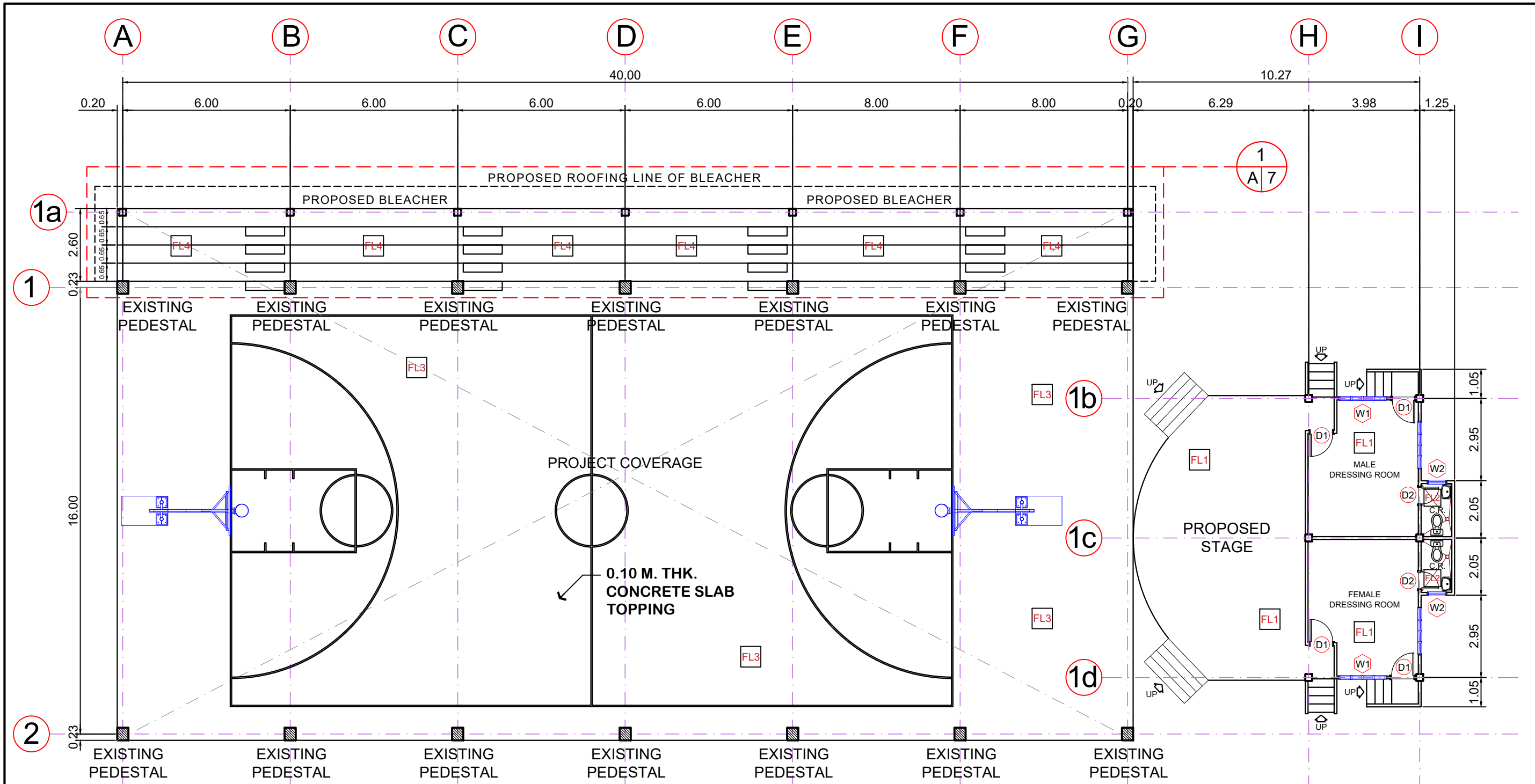


2 LOCATION MAP
 DRAWN NOT SCALED



1 VICINITY MAP
 DRAWN NOT SCALED

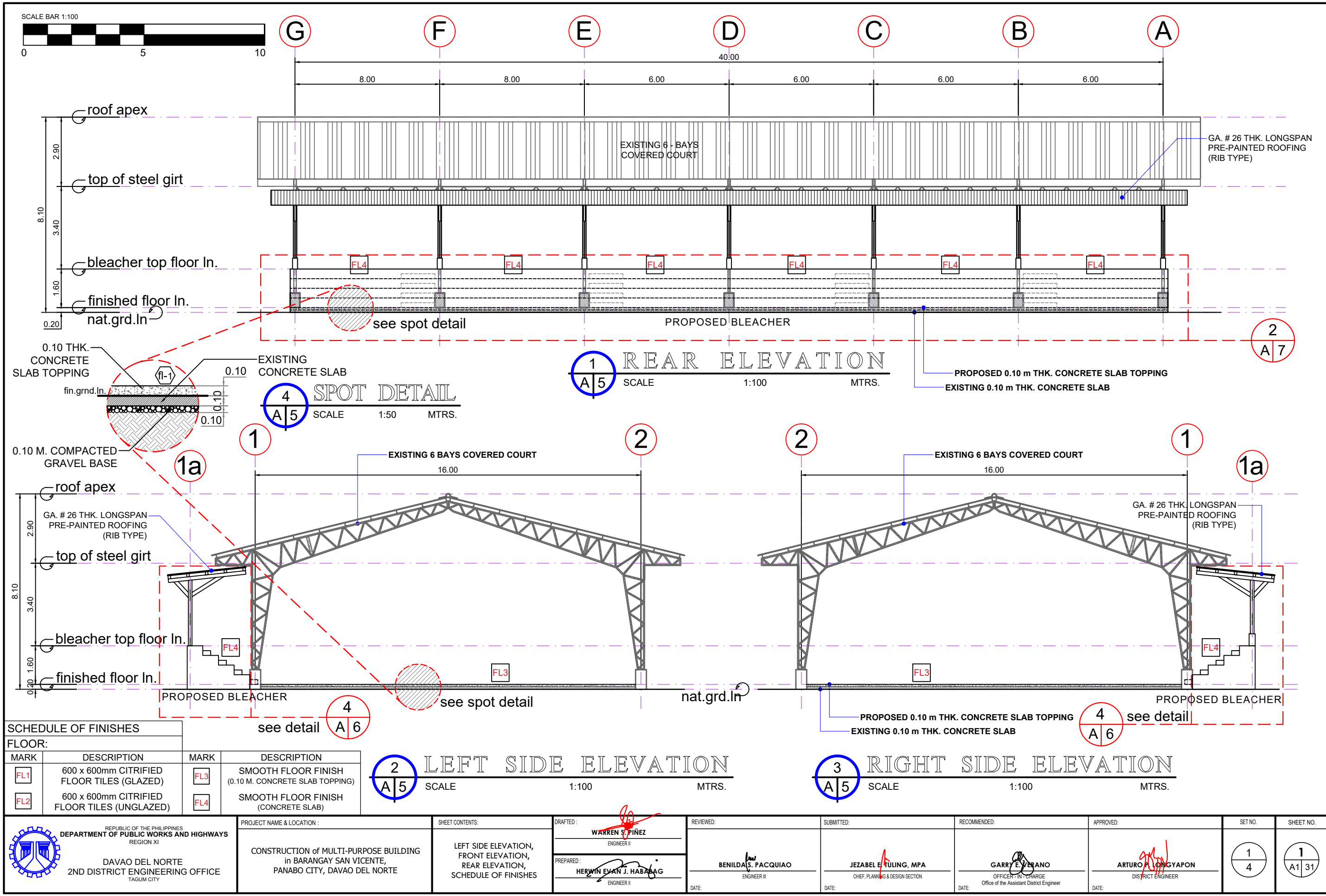
 <p>REPUBLIC OF THE PHILIPPINES DEPARTMENT OF PUBLIC WORKS AND HIGHWAYS REGION XI DAVAO DEL NORTE 2ND DISTRICT ENGINEERING OFFICE TAGUM CITY</p>	<p>PROJECT NAME & LOCATION :</p> <p>CONSTRUCTION of MULTI-PURPOSE BUILDING in BARANGAY SAN VICENTE, PANABO CITY, DAVAO DEL NORTE</p>	<p>SHEET CONTENTS:</p> <p>VICINITY MAP LOCATION MAP</p>	<p>DRAFTED :</p> <p>WARREN S. PIÑEZ ENGINEER II</p> <p>PREPARED :</p> <p>HERWIN EVAN J. HABAG ENGINEER II</p>	<p>REVIEWED:</p> <p>BENILDA S. PACQUIAO ENGINEER III</p> <p>DATE:</p>	<p>SUBMITTED:</p> <p>JEZABEL TULING, MPA CHIEF, PLANNING & DESIGN SECTION</p> <p>DATE:</p>	<p>RECOMMENDED:</p> <p>GARRY E. VERANO OFFICER-IN-CHARGE Office of the Assistant District Engineer</p> <p>DATE:</p>	<p>APPROVED:</p> <p>ARTURO P. LONGYAPON DISTRICT ENGINEER</p> <p>DATE:</p>	<p>SET NO.</p> <p>1 4</p>	<p>SHEET NO.</p> <p>1 A1 31</p>
--	--	--	---	---	--	--	--	--	--

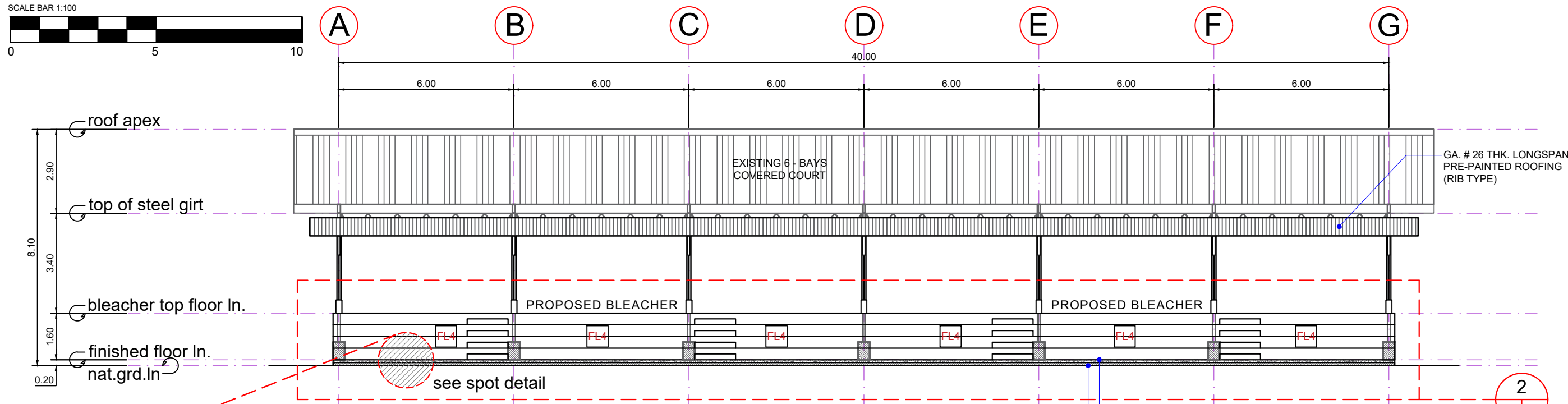
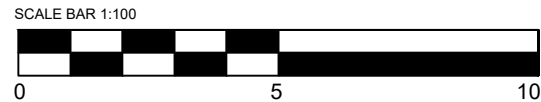


1 FLOOR PLAN
A 4
SCALE 1:100 MTRS.

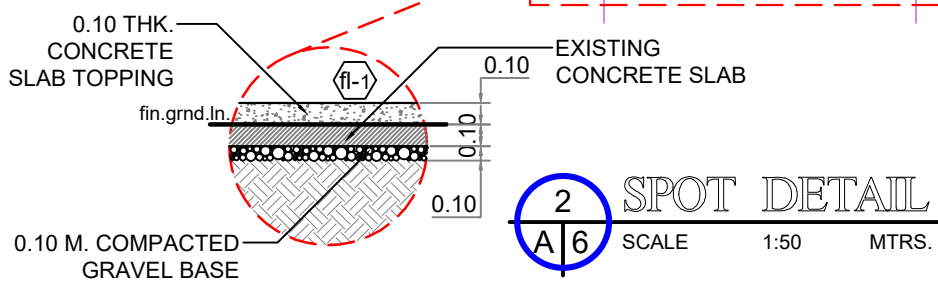
SCHEDULE OF FINISHES

FLOOR:			
MARK	DESCRIPTION	MARK	DESCRIPTION
FL1	600 x 600mm CITRIFIED FLOOR TILES (GLAZED)	FL3	SMOOTH FLOOR FINISH (0.10 M. CONCRETE SLAB TOPPING)
FL2	600 x 600mm CITRIFIED FLOOR TILES (UNGLAZED)	FL4	SMOOTH FLOOR FINISH (CONCRETE SLAB)

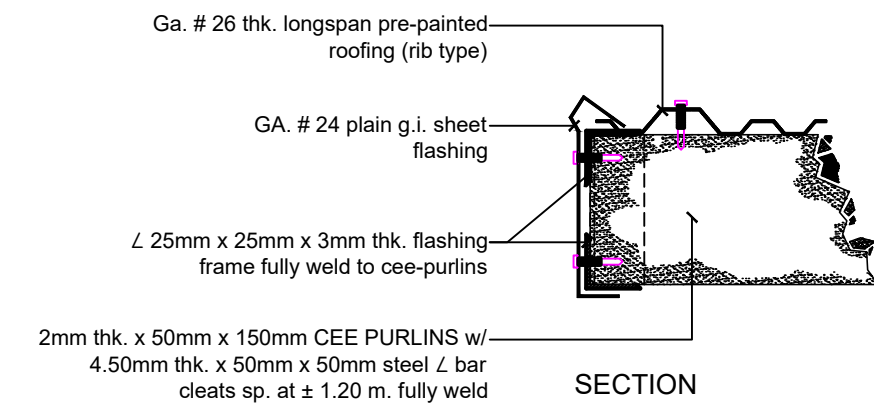




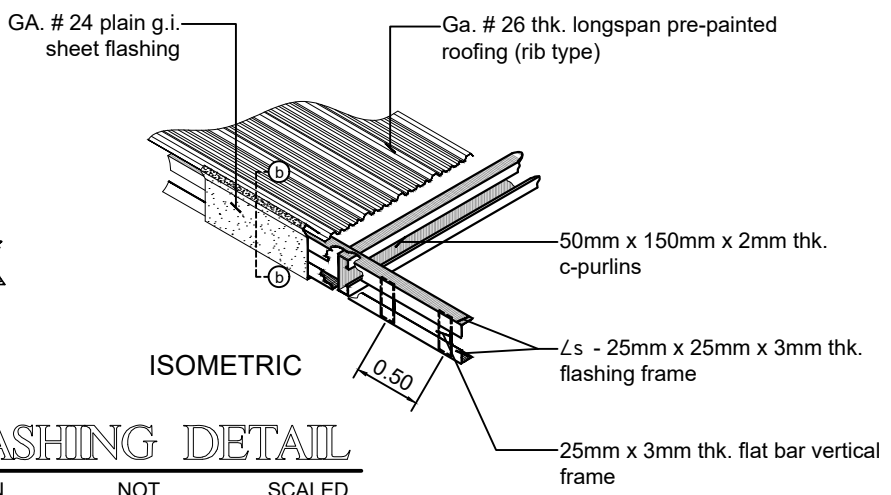
1 FRONT ELEVATION
SCALE 1:100 MTRS.



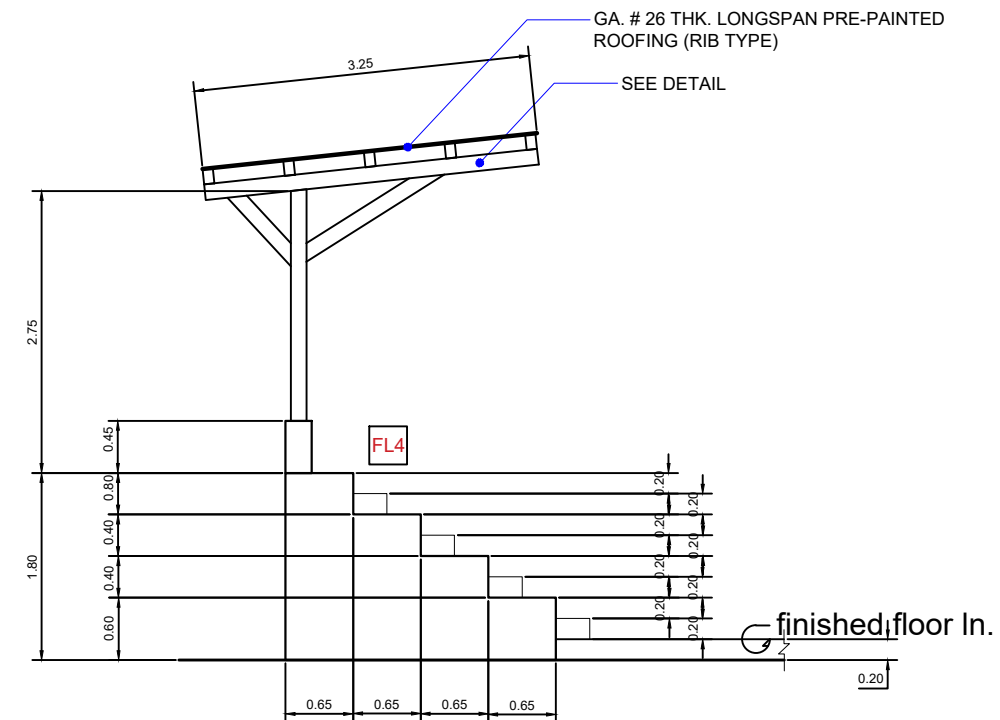
2 SPOT DETAIL
SCALE 1:50 MTRS.



SECTION



ISOMETRIC



4 4-STEPS BLEACHER TYPICAL ELEVATION
SCALE 1:50 MTRS.

SCHEDULE OF FINISHES			
FLOOR:			
MARK	DESCRIPTION	MARK	DESCRIPTION
FL1	600 x 600mm CITRIFIED FLOOR TILES (GLAZED)	FL3	SMOOTH FLOOR FINISH (0.10 M. CONCRETE SLAB TOPPING)
FL2	600 x 600mm CITRIFIED FLOOR TILES (UNGLAZED)	FL4	SMOOTH FLOOR FINISH (CONCRETE SLAB)

 REPUBLIC OF THE PHILIPPINES DEPARTMENT OF PUBLIC WORKS AND HIGHWAYS REGION XI DAVAO DEL NORTE 2ND DISTRICT ENGINEERING OFFICE TAGUM CITY	PROJECT NAME & LOCATION : CONSTRUCTION of MULTI-PURPOSE BUILDING in BARANGAY SAN VICENTE, PANABO CITY, DAVAO DEL NORTE	SHEET CONTENTS: FRONT ELEVATION, SPOT DETAIL, FLASHING DETAIL, 4-STEPS BLEACHER ELEVATION, SCHEDULE OF FINISHES	DRAFTED : WARREN S. PIÑEZ ENGINEER II	REVIEWED : BENILDA S. PACQUIAO ENGINEER III	SUBMITTED : JEZABEL E. TULING, MPA CHIEF, PLANNING & DESIGN SECTION	RECOMMENDED : GARRY E. VERANO OFFICER-IN-CHARGE Office of the Assistant District Engineer	APPROVED : ARTURO P. LONGYAPON DISTRICT ENGINEER	SET NO. 1 4	SHEET NO. 1 A1 31
			PREPARED : HERWIN EVAN J. HABAGAG ENGINEER II	DATE:	DATE:	DATE:	DATE:	DATE:	