

REPUBLIC OF THE PHILIPPINES  
**DEPARTMENT OF PUBLIC WORKS AND HIGHWAYS**  
NATIONAL CAPITAL REGION  
METRO MANILA 1<sup>ST</sup> DISTRICT ENGINEERING OFFICE  
WEST BANK ROAD, MANGGAHAN FLOODWAY  
ROSARIO, PASIG CITY

C.Y. 2025 PROJECT  
DETAILED ENGINEERING DESIGN PLAN FOR

## **Rehabilitation of MM1DEO Office Facilities, Pasig City**

LOCATION: PASIG CITY  
TOTAL FLOOR AREA: 390.00 SM.

SUBMITTED:

**ELINO V. CASTRO**  
CHIEF, PLANNING AND DESIGN SECTION

DATE:

RECOMMENDED:

**EDUARDO B. DEL ROSARIO**  
ASSISTANT DISTRICT ENGINEER

DATE:

APPROVED:

**ARISTOTLE B. RAMOS**  
DISTRICT ENGINEER

DATE:

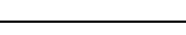






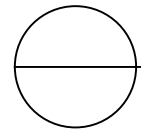


P E R S P E C T I V E S

 <div>REPUBLIC OF THE PHILIPPINES <b>DEPARTMENT OF PUBLIC WORKS AND HIGHWAYS</b> NATIONAL CAPITAL REGION <b>METRO MANILA FIRST DISTRICT ENGINEERING OFFICE</b> WEST BANK ROAD, MANGGAHAN FLOODWAY ROSARIO, PASIG CITY</div>	PROJECT TITLE	SHEET CONTENTS	DRAWN BY:	CHECKED BY	SUBMITTED BY	RECOMMENDING APPROVAL	APPROVED BY	SET	SHEET
	Rehabilitation of MM1DEO Office Facilities, Pasig City	PERSPECTIVES	ANGELICA SAMANTHA B. CARLOS ARCHITECT II						
			PREPARED BY:						
			CRISTINA L. JOSE ARCHITECT II	MARY JESSICA P. HONRADE ENGINEER II	ELINO V. CASTRO CHIEF, PLANNING AND DESIGN SECTION	EDUARDO B. DEL ROSARIO ASSISTANT DISTRICT ENGINEER	ARISTOTLE B. RAMOS DISTRICT ENGINEER	<div>A-02</div>	<div>2 14</div>
			DATE:	DATE:	DATE:	DATE:	DATE:		



ITEM NO.	DESCRIPTION	QUANTITY		UNIT
		AS SUBMITTED	AS EVALUATED	
<b>PART I</b>	<b>FACILITIES FOR THE ENGINEER</b>			
A.1.1 (8)	Provision of Office for the Engineer (Rental Basis)	4.00		months
	<b>TOTAL OF PART I</b>			
<b>PART II</b>	<b>OTHER GENERAL REQUIREMENTS</b>			
B.5 (1)	Project Billboard / Signboard	1.00		each
B.7 (1)	Occupational Safety and Health	1.00		I.s.
B.9 (1)	Mobilization/Demobilization	1.00		I.s.
	<b>TOTAL OF PART II</b>			
<b>PART III</b>	<b>CIVIL, MECHANICAL, ELECTRICAL AND SANITARY / PLUMBING WORKS</b>			
<b>PART A</b>	<b>EARTHWORKS</b>			
801 (1)	Removal of Structures & Obstruction	1.00		I.s.
804 (2) a	Embankment from Borrow (Common Soil)	79.50		cu.m.
804 (7)	Gravel Fill	9.00		cu.m.
	<b>TOTAL OF PART A</b>			
<b>PART B</b>	<b>PLAIN AND REINFORCED CONCRETE WORK</b>			
B.24 (1)	General Scaffolding and Shoring	1.00		I.s.
900 (1) h	Structural Concrete (4,000 psi, Class A, 14days)	74.93		cu.m.
902 (1) a1	Reinforcing Steel (Deformed, Grade 40)	12,750.32		kgs
902 (1) a2	Reinforcing Steel (Deformed, Grade 60)	2,044.98		kgs
903 (1)	Formworks and Falseworks.	1.00		I.s.
903 (2)	Formworks and Falseworks	198.00		m2
1033 (1)	Metal Deck Panel	109.00		m2
	<b>TOTAL OF PART B</b>			
<b>PART C</b>	<b>FINISHINGS AND OTHER CIVIL WORKS</b>			
<b>PART C.1</b>	<b>Plumbing Works</b>			
1001 (8)	Sewer Line Works	1.00		I.s.
1002 (4)	Plumbing Fixtures	1.00		I.s.
1002 (24)	Cold Water Lines	1.00		I.s.
<b>PART C.2</b>	<b>Carpentry Works</b>			
1003 (23)	Modular Partition	1.00		I.s.
1003 (1) f	Ceiling (Metal Frame/ Aluminum Metal Cladding)	275.00		sq.m.
1003 (2) a3	Wall (Fiber Cement Board, 6mm thick on Metal Frame)	95.00		sq.m.
1003 (2) d	Wall (Aluminum Metal Cladding)	85.00		m2
1003 (17)	Carpentry and Joinery Works	1.00		I.s.
<b>PART C.3</b>	<b>Fabricated Materials</b>			
1007 (1) b	Aluminum Framed Glass Door (Swing Type)	18.90		sq.m.
1007 (1) a	Aluminum Framed Glass Door, Sliding Type	5.00		sq.m.
1008 (1) c	Aluminum Glass Window, Awning Type	28.67		sq.m.
1008 (1) d	Aluminum Glass Window, Fixed Type	86.00		sq.m.
1010 (2) b	Doors (Wood Panels)	8.60		sq.m.
<b>PART C.4</b>	<b>Architectural Finishing Works</b>			
1014 (1) a2	Pre-painted Metal Sheets (Corrugated Type, Long Span, above 0.427 mm thick)	281.00		m2
1013 (2) b	Fabricated Metal Roofing Accessory (Flashings), Gauge 26	315.00		l.m.
1013 (2) c	Fabricated Metal Roofing Accessory (Gutter), Gauge 24	126.00		l.m.
1038 (1)	Reflective Insulation	281.00		sq.m.
1016 (2)	Built-Up and Performed Membrane	50.00		m2
1018 (1)	Glazed Tiles & Trims	380.00		m2
1018 (3)	Granite Tiles	40.00		m2
1018 (2)	Unglazed Tiles	148.00		m2
1027 (1)	Cement Plaster Finish	516.40		m2
1032 (1) a	Painting Works, Masonry/Concrete	516.40		m2
1032 (1) b	Painting Works, Wood	88.60		m2
1003 (2) e	Wall	1.00		I.s.
<b>PART C.5</b>	<b>Masonry Works</b>			
1046 (2) a1	100 mm CHB Non Load Bearing (Including Reinforcing Steel)	60.20		sq.m.
1046 (2) a2	150 mm CHB Non Load Bearing (Including Reinforcing Steel)	198.00		sq.m.
<b>PART C.6</b>	<b>Steel Works</b>			
1047 (7)	Structural Steel	1.00		I.s.
	<b>TOTAL OF PART C</b>			
<b>PART D</b>	<b>ELECTRICAL</b>			
1100 (10)	Conduit, Boxes and Fittings (Conduit works / Conduit Roughing-in)	1.00		I.s.
1101 (33)	Wires and Wiring Devices	1.00		I.s.
1102 (1)	Panel Board with Main & Branch Breakers	1.00		I.s.
1103 (1)	Lighting Fixtures	1.00		I.s.
	<b>TOTAL OF PART D</b>			
<b>PART E</b>	<b>MECHANICAL</b>			
1200 (1)	Ventilating Equipment	1.00		I.s.
	<b>TOTAL OF PART E</b>			
	<b>TOTAL OF PART III</b>			
	<b>GRAND TOTAL (PART I, II &amp; III)</b>			

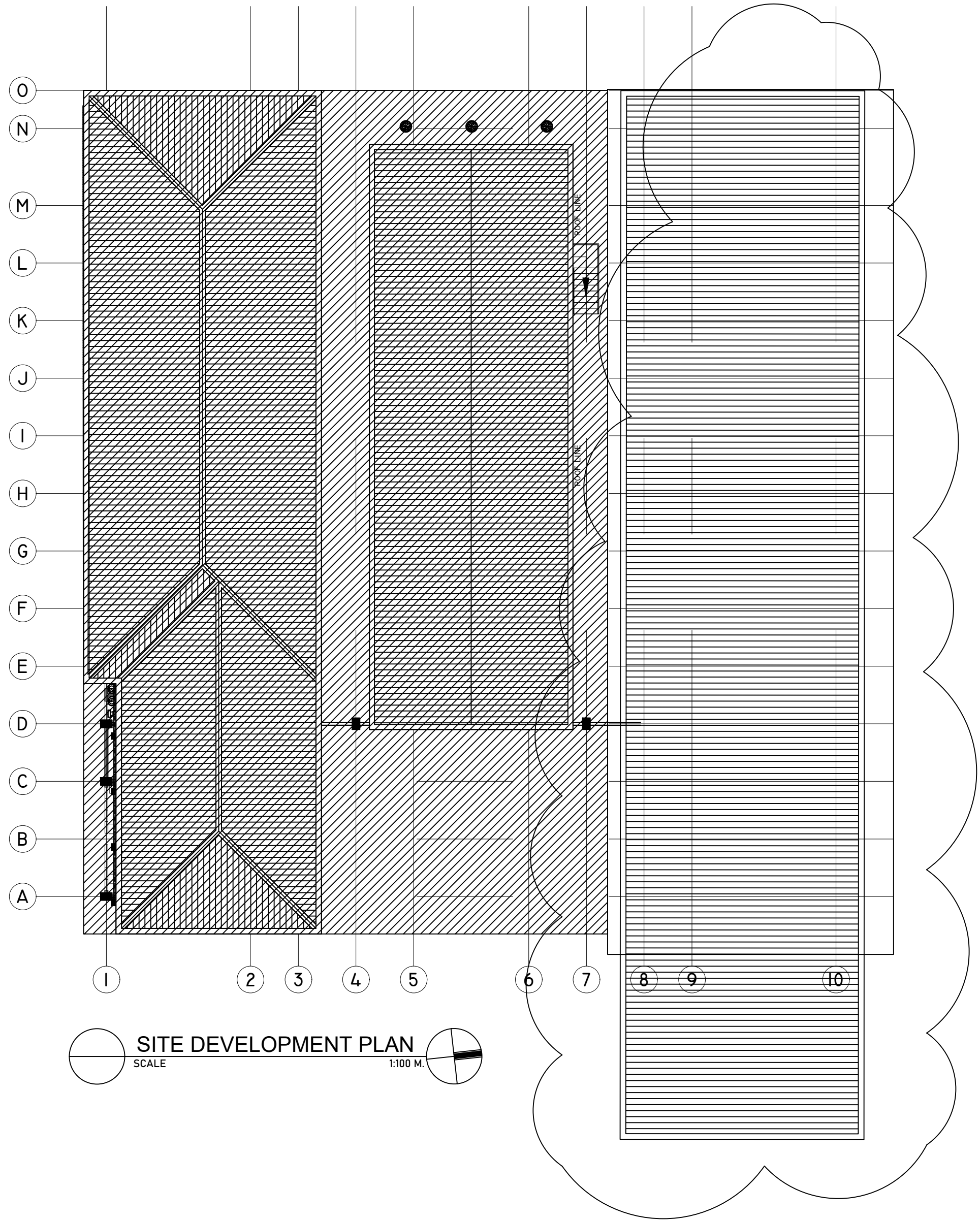
 **BILL OF QUANTITIES**  
SCALE NTS

THIS IS TO CERTIFY THAT THE DETAILED ENGINEERING DESIGNS HAVE BEEN CONDUCTED ACCORDING TO THE PRESCRIBED DPWH STANDARDS SPECIFICATIONS FOR PUBLIC WORKS STRUCTURES BUILDINGS, PORTS, AND HARBORS, FLOOD CONTROL AND DRAINAGE STRUCTURES AND WATER SUPPLY SYSTEMS, VOLUME III 1995 EDITION IN THE CONFORMANCE WITH THE PROVISION OF THE 2016 REVISED IRR NO. 9184.

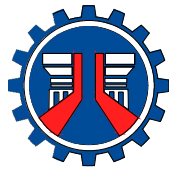
ELINO V. CASTRO  
CHIEF, PLANNING & DESIGN SECTION  
ENGINEER III



 **VICINITY MAP**  
SCALE NTS



 **SITE DEVELOPMENT PLAN**  
SCALE 1:100 M.



REPUBLIC OF THE PHILIPPINES  
**DEPARTMENT OF PUBLIC WORKS AND HIGHWAYS**  
NATIONAL CAPITAL REGION  
**METRO MANILA FIRST DISTRICT ENGINEERING OFFICE**  
WEST BANK ROAD, MANGGAHAN FLOODWAY  
ROSARIO, PASIG CITY

**PROJECT TITLE**  
**Rehabilitation of MM1DEO Office Facilities, Pasig City**

**SHEET CONTENTS**  
-VICINITY MAP  
-LOCATION MAP  
-SITE DEVELOPMENT PLAN  
-EXISTING SITE CONDITION

**DRAWN BY:**  
ANGELICA SAMANTHA B. CARLOS  
ARCHITECT II  
**PREPARED BY:**  
CRISTINA L. JOSE  
ARCHITECT II

**CHECKED BY**  
MARY JESSICA P. HONRADE  
ENGINEER II  
DATE:

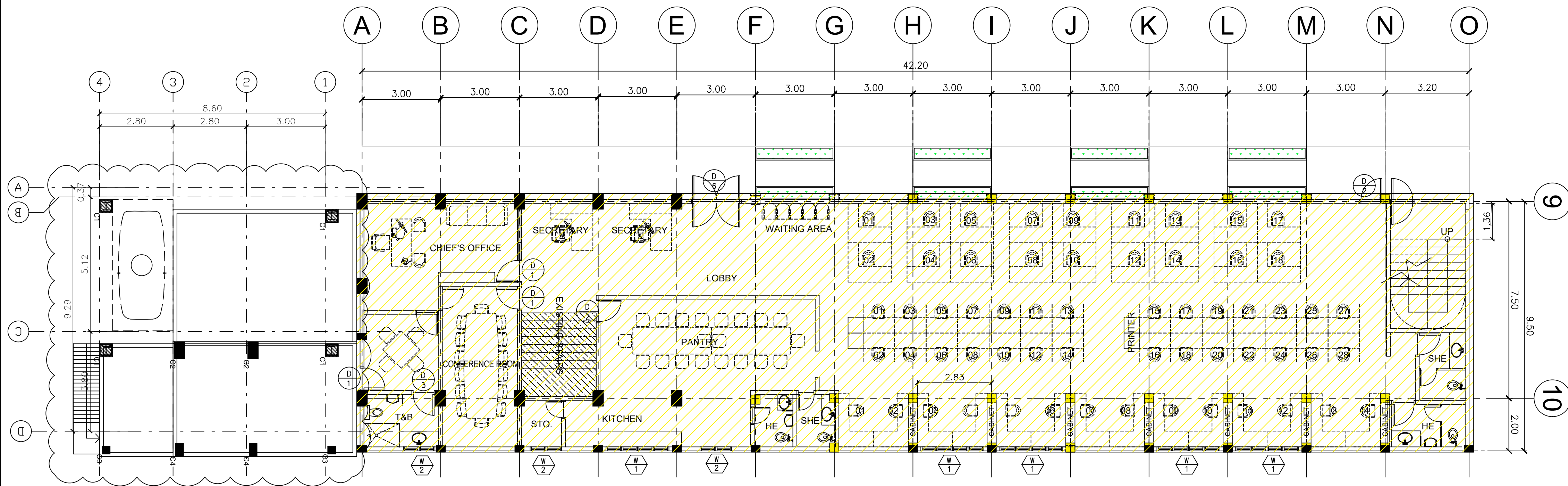
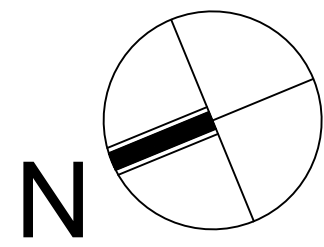
**SUBMITTED BY**  
ELINO V. CASTRO  
CHIEF, PLANNING AND DESIGN SECTION  
DATE:

**RECOMMENDING APPROVAL**  
EDUARDO B. DEL ROSARIO  
ASSISTANT DISTRICT ENGINEER  
DATE:

**APPROVED BY**  
ARISTOTLE B. RAMOS  
DISTRICT ENGINEER  
DATE:

**SET**  
A-03

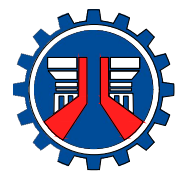
**SHEET**  
3  
14



GROUND FLOOR PLAN  
SCALE 1:100

## SCOPE OF WORKS

- FOLLOW ACTUAL DIMENSIONS OF BUILDING MEMBER FOR ANY DISCREPANCIES.
- FLOOR  
SLAB-HEIGHT: 0.40M
- REMOVE ALL EXISTING TILES AND PREPARE FLOORING FOR NEW INSTALLATION OF TILES AS INDICATED IN THE PLAN.
- REMOVE ALL EXISTING CEILING AND ITS FRAME FOR NEW INSTALLATION OF CEILING AS INDICATED IN THE PLAN.
- MODULAR OFFICE TABLES
- ADDITIONAL VENTILATING EQUIPMENTS
- REPLACEMENT OF PLUMBING FIXTURES
- REVISION OF INTERIOR WALL PARTITIONS
- REPAINTING OF INTERIOR WALLS
- ANY ADJUSTMENT PRIOR TO IMPLEMENTATION MUST BE VERIFIED WITH THE ARCHITECT OR ENGINEER.



REPUBLIC OF THE PHILIPPINES  
**DEPARTMENT OF PUBLIC WORKS AND HIGHWAYS**  
NATIONAL CAPITAL REGION  
**METRO MANILA FIRST DISTRICT ENGINEERING OFFICE**  
WEST BANK ROAD, MANGGAHAN FLOODWAY  
ROSARIO, PASIG CITY

### PROJECT TITLE

Rehabilitation of MM1DEO Office Facilities, Pasig City

### SHEET CONTENTS

GROUND FLOOR PLAN,  
ROOF PLAN

### DRAWN BY:

ANGELICA SAMANTHA B. CARLOS  
ARCHITECT II

### PREPARED BY:

CRISTINA L. JOSE  
ARCHITECT II

### CHECKED BY

MARY JESSICA P. HONRADE  
ENGINEER II

DATE:

### SUBMITTED BY

ELINO V. CASTRO  
CHIEF, PLANNING AND DESIGN SECTION

DATE:

### RECOMMENDING APPROVAL

EDUARDO B. DEL ROSARIO  
ASSISTANT DISTRICT ENGINEER

DATE:

### APPROVED BY

ARISTOTLE B. RAMOS  
DISTRICT ENGINEER

DATE:

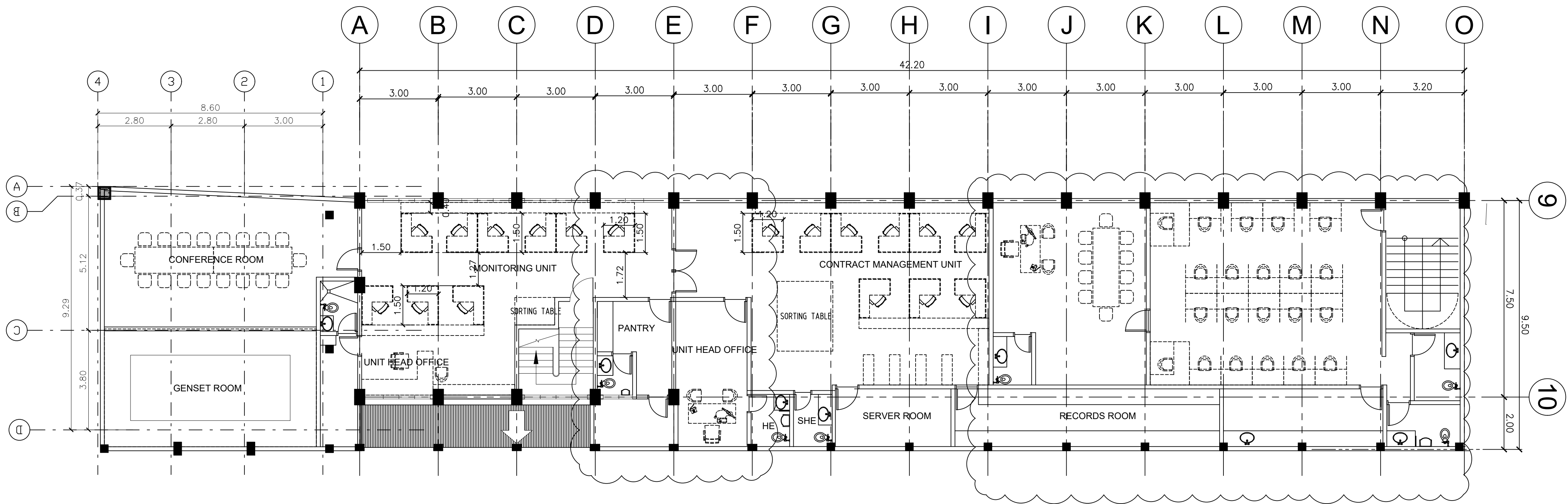
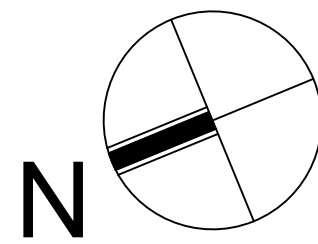
### SET

A-04

### SHEET

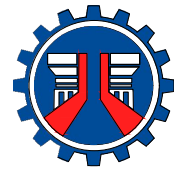
4  
14





SCOPE OF WORKS

- FOLLOW ACTUAL DIMENSIONS OF BUILDING MEMBER FOR ANY DISCREPANCIES.
- CONSTRUCTION OF GENERATOR ROOM
- REMOVE ALL EXISTING TILES AND PREPARE FLOORING FOR NEW INSTALLATION OF TILES AS INDICATED IN THE PLAN.
- REMOVE ALL EXISTING CEILING AND ITS FRAME FOR NEW INSTALLATION OF CEILING AS INDICATED IN THE PLAN.
- MODULAR OFFICE TABLES FOR MONITORING UNIT, CONTRACT MANAGEMENT UNIT & FINANCE SECTION
- ADDITIONAL VENTILATING EQUIPMENTS
- REPLACEMENT OF PLUMBING FIXTURES
- REPLACEMENT OF ROOF TRUSSINS AND ROOFING SHEET
- REVISION OF INTERIOR WALL PARTITIONS
- REPAINTING OF INTERIOR WALLS
- ANY ADJUSTMENT PRIOR TO IMPLEMENTATION MUST BE VERIFIED WITH THE ARCHITECT OR ENGINEER.



REPUBLIC OF THE PHILIPPINES  
**DEPARTMENT OF PUBLIC WORKS AND HIGHWAYS**  
NATIONAL CAPITAL REGION  
**METRO MANILA FIRST DISTRICT ENGINEERING OFFICE**  
WEST BANK ROAD, MANGGAHAN FLOODWAY  
ROSARIO, PASIG CITY

**PROJECT TITLE**  
**Rehabilitation of MM1DEO Office Facilities, Pasig City**

**SHEET CONTENTS**  
2nd FLOOR PLAN,

**DRAWN BY:**  
ANGELICA SAMANTHA B. CARLOS  
ARCHITECT II  
**PREPARED BY:**  
**CRISTINA L. JOSE**  
ARCHITECT II

**CHECKED BY**  
**MARY JESSICA P. HONRADE**  
ENGINEER II  
DATE:

**SUBMITTED BY**  
**ELINO V. CASTRO**  
CHIEF, PLANNING AND DESIGN SECTION  
DATE:

**RECOMMENDING APPROVAL**  
**EDUARDO B. DEL ROSARIO**  
ASSISTANT DISTRICT ENGINEER  
DATE:

**APPROVED BY**  
**ARISTOTLE B. RAMOS**  
DISTRICT ENGINEER  
DATE:

**SET**  
**A-05**

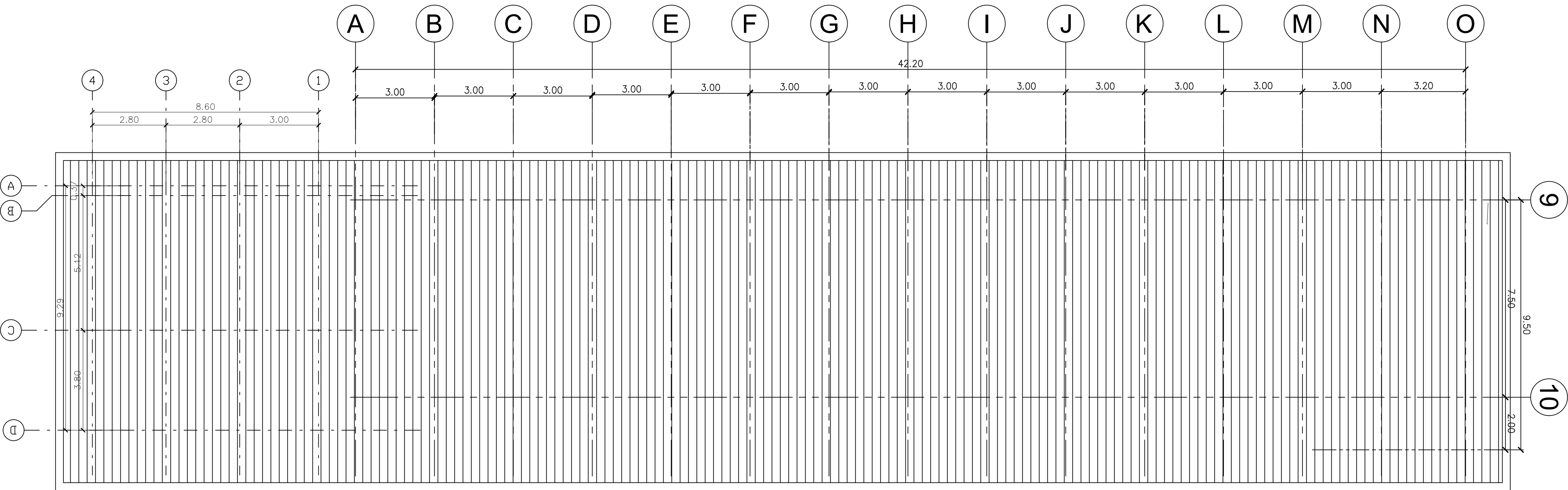
**SHEET**  
**5**  
14

SCOPE OF WORKS

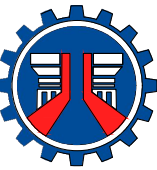
- 1. EXPANSION OF CONSTRUCTION SECTION OFFICE AREA
- 2. PROVISION FOR ADDITIONAL ELECTRICAL, LIGHTING & DATA LINES
- 3. FINISHING WORKS (TILING & PAINTING)
- 4. CARPENTRY WORKS (CEILING INSTALLATION)
- 5. INSTALLATION OF FABRICATED MATERIALS

SCOPE OF WORKS

- FOLLOW ACTUAL DIMENSIONS OF BUILDING MEMBER FOR ANY DISCREPANCIES.
- CONSTRUCTION OF GENERATOR ROOM
- REMOVE ALL EXISTING TILES AND PREPARE FLOORING FOR NEW INSTALLATION OF TILES AS INDICATED IN THE PLAN.
- REMOVE ALL EXISTING CEILING AND ITS FRAME FOR NEW INSTALLATION OF CEILING AS INDICATED IN THE PLAN.
- MODULAR OFFICE TABLES FOR MONITORING UNIT, CONTRACT MANAGEMENT UNIT & FINANCE SECTION
- ADDITIONAL VENTILATING EQUIPMENTS
- REPLACEMENT OF PLUMBING FIXTURES
- REPLACEMENT OF ROOF TRUSSINS AND ROOFING SHEET
- REVISION OF INTERIOR WALL PARTITIONS
- REPAINTING OF INTERIOR WALLS
- ANY ADJUSTMENT PRIOR TO IMPLEMENTATION MUST BE VERIFIED WITH THE ARCHITECT OR ENGINEER.



ROOF PLAN  
SCALE 1:100 M.



REPUBLIC OF THE PHILIPPINES  
**DEPARTMENT OF PUBLIC WORKS AND HIGHWAYS**  
NATIONAL CAPITAL REGION  
**METRO MANILA FIRST DISTRICT ENGINEERING OFFICE**  
WEST BANK ROAD, MANGGAHAN FLOODWAY  
ROSARIO, PASIG CITY

**PROJECT TITLE**  
**Rehabilitation of MM1DEO Office Facilities, Pasig City**

**SHEET CONTENTS**  
ROOF PLAN

**DRAWN BY:**  
ANGELICA SAMANTHA B. CARLOS  
ARCHITECT II  
**PREPARED BY:**  
CRISTINA L. JOSE  
ARCHITECT II

**CHECKED BY**  
**MARY JESSICA P. HONRADE**  
ENGINEER II  
DATE:

**SUBMITTED BY**  
**ELINO V. CASTRO**  
CHIEF, PLANNING AND DESIGN SECTION  
DATE:

**RECOMMENDING APPROVAL**  
**EDUARDO B. DEL ROSARIO**  
ASSISTANT DISTRICT ENGINEER  
DATE:

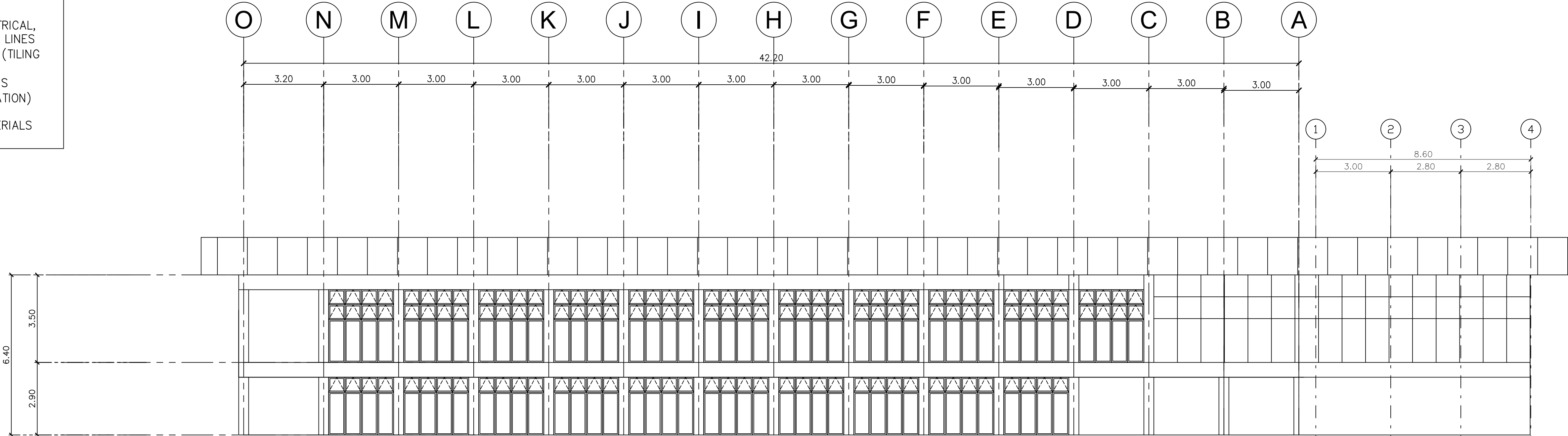
**APPROVED BY**  
**ARISTOTLE B. RAMOS**  
DISTRICT ENGINEER  
DATE:

**SET**  
**A-06**

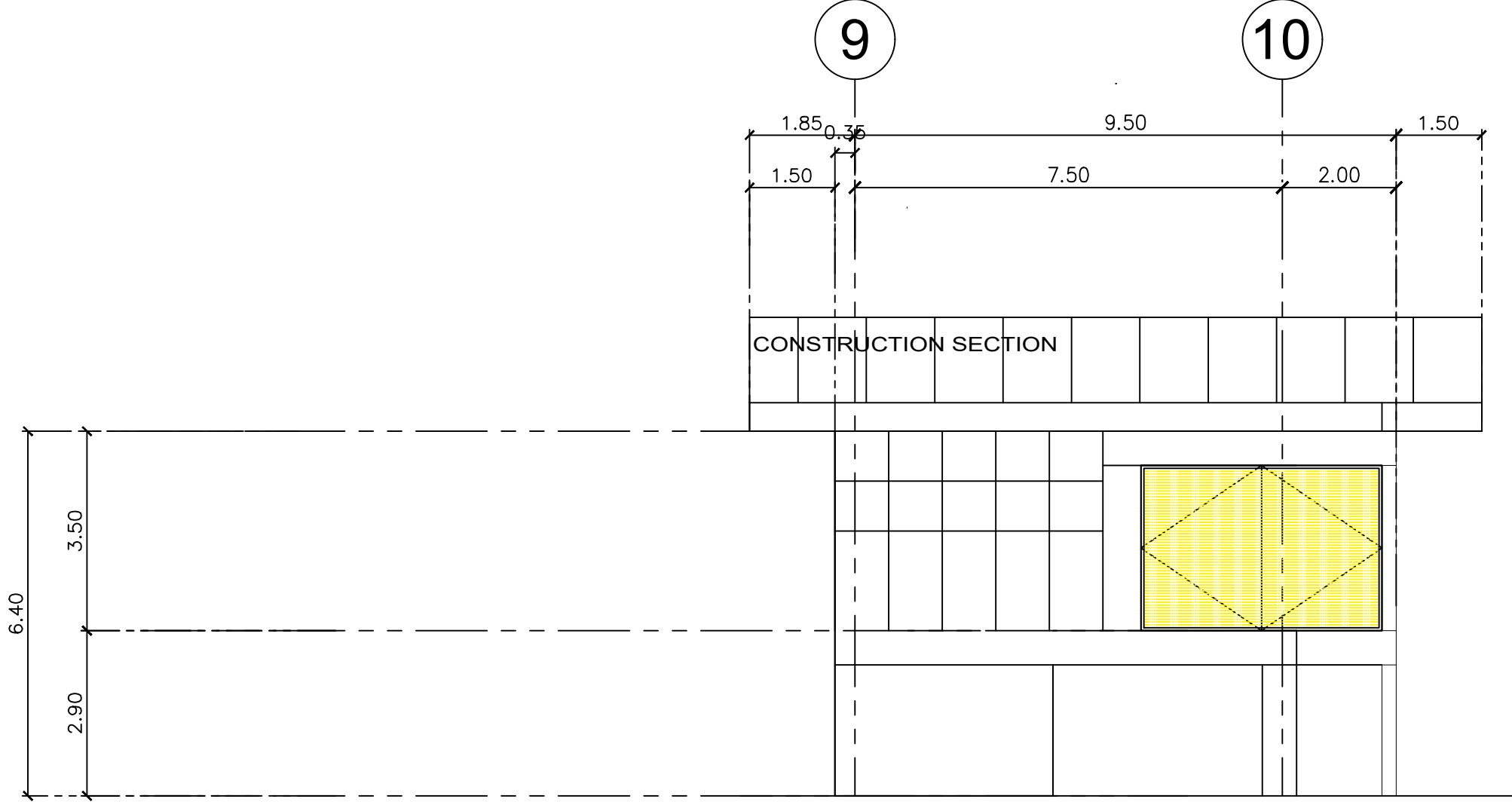
**SHEET**  
**6**  
**14**

SCOPE OF WORKS

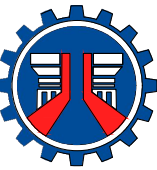
1. EXPANSION OF  
CONSTRUCTION SECTION  
OFFICE AREA
2. PROVISION FOR  
ADDITIONAL ELECTRICAL,  
LIGHTING & DATA LINES
3. FINISHING WORKS (TILING  
& PAINTING)
4. CARPENTRY WORKS  
(CEILING INSTALLATION)
5. INSTALLATION OF  
FABRICATED MATERIALS



LEFT-SIDE ELEVATION  
SCALE 1:100 M.



FRONT ELEVATION  
SCALE 1:100 M.



REPUBLIC OF THE PHILIPPINES  
**DEPARTMENT OF PUBLIC WORKS AND HIGHWAYS**  
NATIONAL CAPITAL REGION  
**METRO MANILA FIRST DISTRICT ENGINEERING OFFICE**  
WEST BANK ROAD, MANGGAHAN FLOODWAY  
ROSARIO, PASIG CITY

**PROJECT TITLE**  
**Rehabilitation of MM1DEO Office Facilities, Pasig City**

**SHEET CONTENTS**

ELEVATIONS

**DRAWN BY:**

ANGELICA SAMANTHA B. CARLOS  
ARCHITECT II

**PREPARED BY:**

**CRISTINA L. JOSE**  
ARCHITECT II

**CHECKED BY**

**MARY JESSICA P. HONRADE**  
ENGINEER II

DATE:

**SUBMITTED BY**

**ELINO V. CASTRO**  
CHIEF, PLANNING AND DESIGN SECTION

DATE:

**RECOMMENDING APPROVAL**

**EDUARDO B. DEL ROSARIO**  
ASSISTANT DISTRICT ENGINEER

DATE:

**APPROVED BY**

**ARISTOTLE B. RAMOS**  
DISTRICT ENGINEER

DATE:

**SET**

**A-07**

**SHEET**

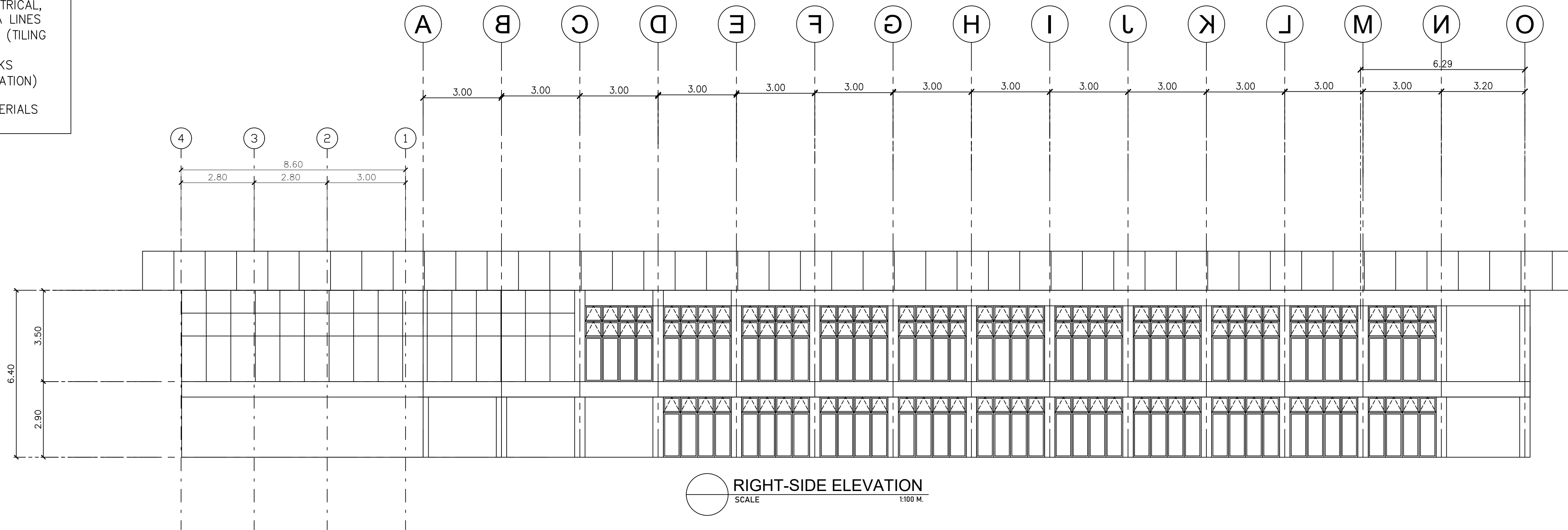
**7**

**14**

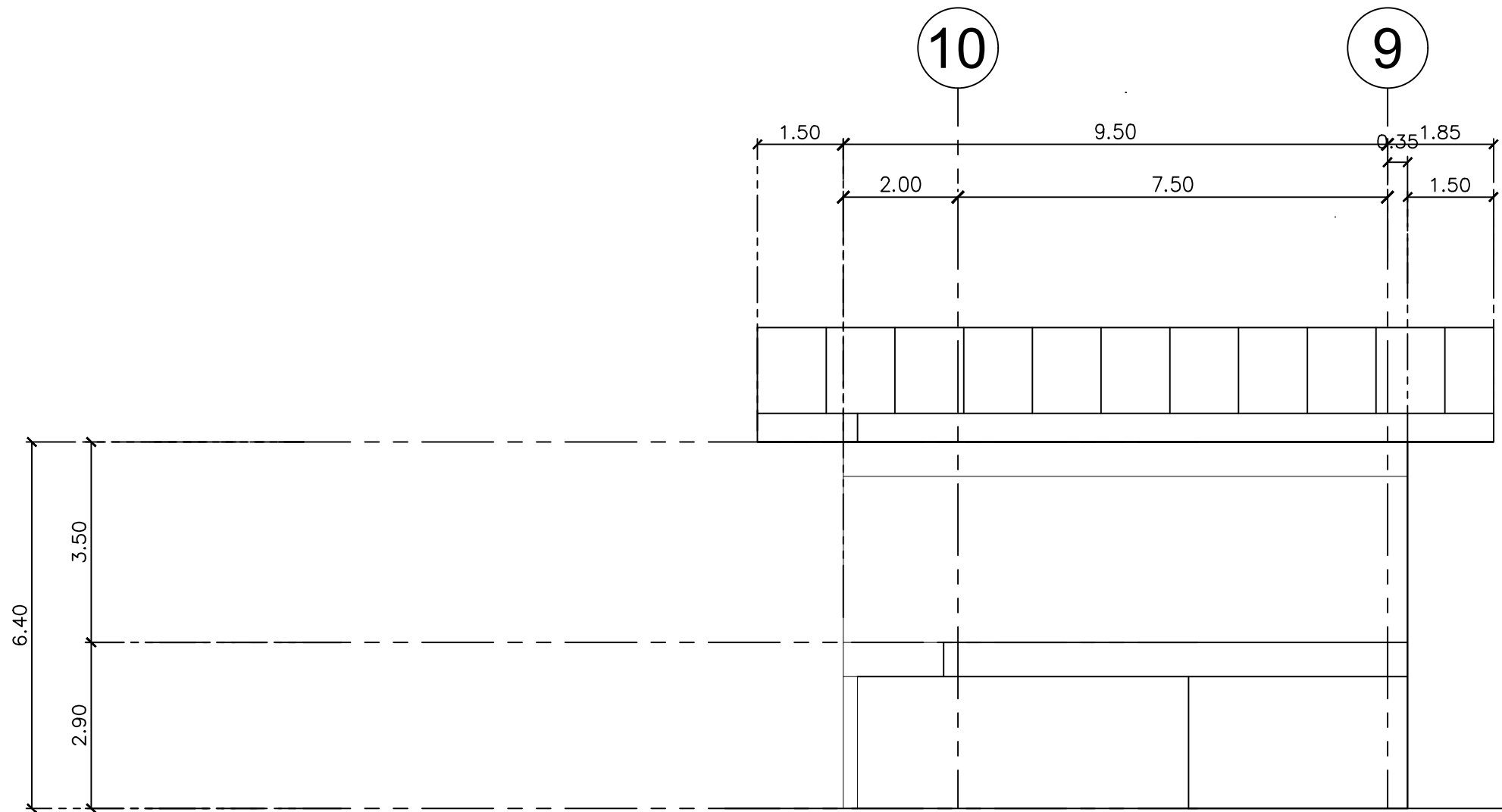


SCOPE OF WORKS

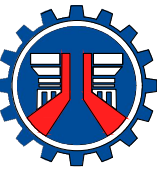
- 1. EXPANSION OF CONSTRUCTION SECTION OFFICE AREA
- 2. PROVISION FOR ADDITIONAL ELECTRICAL, LIGHTING & DATA LINES
- 3. FINISHING WORKS (TILING & PAINTING)
- 4. CARPENTRY WORKS (CEILING INSTALLATION)
- 5. INSTALLATION OF FABRICATED MATERIALS



RIGHT-SIDE ELEVATION  
SCALE 1:100 M.



REAR ELEVATION  
SCALE 1:100 M.



REPUBLIC OF THE PHILIPPINES  
**DEPARTMENT OF PUBLIC WORKS AND HIGHWAYS**  
NATIONAL CAPITAL REGION  
**METRO MANILA FIRST DISTRICT ENGINEERING OFFICE**  
WEST BANK ROAD, MANGGAHAN FLOODWAY  
ROSARIO, PASIG CITY

**PROJECT TITLE**  
**Rehabilitation of MM1DEO Office Facilities, Pasig City**

**SHEET CONTENTS**

ELEVATIONS

**DRAWN BY:**

ANGELICA SAMANTHA B. CARLOS  
ARCHITECT II

**PREPARED BY:**

CRISTINA L. JOSE  
ARCHITECT II

**CHECKED BY**

MARY JESSICA P. HONRADE  
ENGINEER II

DATE:

**SUBMITTED BY**

ELINO V. CASTRO  
CHIEF, PLANNING AND DESIGN SECTION

DATE:

**RECOMMENDING APPROVAL**

EDUARDO B. DEL ROSARIO  
ASSISTANT DISTRICT ENGINEER

DATE:

**APPROVED BY**

ARISTOTLE B. RAMOS  
DISTRICT ENGINEER

DATE:

**SET**

A-08

**SHEET**

8

14