



REPUBLIC OF THE PHILIPPINES  
DEPARTMENT OF PUBLIC WORKS AND HIGHWAYS  
OFFICE OF THE SECRETARY  
MANILA

097-13- DPWH  
8-08-02

AUG 08 2002

DEPARTMENT ORDER )

No. 189 )  
Series of 2002 8-08-02 )

SUBJECT: REVISED PROCEDURES  
FOR NEW PRODUCT  
EVALUATION/  
ACCREDITATION

The attached Product Accreditation Scheme, which covers new or innovative product prior to permitting their use in DPWH projects, is hereby adopted, effective immediately.

Among these things, the procedures indicate the number of pilot trials to be constructed as well as the performance monitoring period to be adopted on the Item of Work where the product is intended to be used prior to accreditation of the new product, and define the roles of the proponent and the Department during the process of evaluation/accreditation. These requirements were not clearly presented in the previous procedures.

In no case, should any new product be accredited for use in DPWH projects without prior evaluation.

This supersedes the Flowchart of Proforma Procedures for Evaluation of New Products which has been adopted by the Department since 1989.

  
SIMEON A. DATUMANONG  
Secretary

Attachment. As stated.

**Department of Public Works and Highways  
BUREAU OF RESEARCH AND STANDARDS**

**PRODUCT ACCREDITATION SCHEME (P.A.S.)**

**1.0 Introduction**

The Product Accreditation Scheme (PAS) has been set-up to prescribe procedures and requirements for the evaluation by the Department of Public Works and Highways (DPWH), through its Bureau of Research and Standards (BRS), of new or innovative products prior to permitting their use in DPWH projects.

This scheme supersedes the Flowchart of Proforma Procedures for Evaluation of New Products which has been adopted by the Department since 1989.

**2.0 Coverage**

The accreditation will cover new products which are not yet covered by or vary from existing specifications adopted by the Department, including but not limited to soil stabilizers, concrete and asphalt admixtures, and cracks/potholes repair products.

**3.0 Stages of Product Evaluation**

Each product will go through five stages of evaluation, namely: evaluation of product characteristics, applications and test methods; conduct of small-scale pilot trials; issuance of conditional approval to use the product in DPWH projects; conduct of large-scale trials; and, issuance of accreditation certificate. The requirements and procedures for each evaluation stage are discussed in the following sections:

**3.1 Evaluation of Product Characteristics, Applications and Test Methods**

**3.1.1 The proponent shall submit:**

- a. Letter to DPWH signifying intent to have a product evaluated under this scheme.



- b. Comprehensive product brochures/literature, indicating among others, the specifications and test requirements.
- c. List of distributors/suppliers as well as the market price of the product to be evaluated.

3.1.2 The BRS shall evaluate the submitted documents and determine whether the product is covered by or not/varies from existing specifications used by the Department. Likewise, BRS shall initially determine if the product will address DPWH needs.

3.1.3 If the product passes the above evaluation, a laboratory evaluation shall be conducted based on the requirements of the DPWH Standard Specifications for Highways, Bridges and Airports, Volume II for the Item of Work for which the product is intended to be used, or based on the product specifications and test requirements submitted by the proponent.

If the product does not address DPWH needs, the proponent shall be notified accordingly.

3.1.4 The proponent shall be required to provide all the materials needed for the conduct of laboratory evaluation as well as an engineer and/or laboratory personnel who shall assist the BRS personnel in the conduct of the laboratory testing.

If BRS does not have the testing facilities to undertake the required test, the proponent shall be advised to have the product tested at any DPWH accredited government/private testing laboratory.

3.1.5 BRS, in the presence and with the assistance of the proponent, shall undertake the laboratory tests. In the case where the tests shall be conducted by a DPWH accredited laboratory, BRS and the proponent's personnel shall jointly witness the testing.

3.1.6 If the product passes the laboratory evaluation, BRS will inform the proponent and require their conformance to proceed to the next evaluation stage.



If the product fails the laboratory evaluation, the proponent shall be informed accordingly.

### **3.2 Conduct of Small-Scale Pilot Trials**

- 3.2.1 Upon conforme of the proponent, two (2) small-scale pilot trials shall be scheduled for construction to verify the performance of the product under local conditions, e.g. weather, traffic, etc.
- 3.2.2 The BRS shall identify the sites of the two pilot trials in accordance with the criteria on pilot project site selection, as presented in Annex A.
- 3.2.3 The proponent shall be informed of the sites of the pilot trials and his conforme shall be secured. If the proponent disagrees, the BRS will re-identify sites until such time that the selected sites would be agreeable to both parties.
- 3.2.4 Upon conforme of the proposal, BRS shall lay the necessary ground work for the preliminary and detailed engineering works, as well as the funding of the trials and procurement of contractors, if necessary, in coordination with the concerned DPWH implementing office.
- 3.2.5 The pilot trials shall be constructed under the joint supervision of BRS, the DPWH implementing office and the proponent. The proponent shall supply free of charge the product to be used in the construction of pilot trials.
- 3.2.6 Upon completion of the pilot trials, the BRS, the implementing office, and the proponent shall conduct a final inspection. The proponent shall give a warranty period of at least one (1) year.
- 3.2.7 The BRS and the proponent shall monitor the performance of the product (soil stabilizer, concrete additives and asphalt admixtures) for one (1) year; monthly during the first six (6) months and then quarterly during the next six (6) months. However, cracks/potholes repair products shall be monitored



only for six (6) months, monthly during the first three (3) months, and a final inspection at the end of sixth month.

For other products whose application is not mentioned above, the monitoring period will be jointly determined by BRS and the proponent.

3.2.8 The BRS shall make a final evaluation of the two pilot trials, and a copy of the report shall be furnished to the proponent.

### **3.3 Issuance of a Certificate of Conditional Approval to Use the Product in DPWH Projects**

3.3.1 After two pilot trials have exhibited satisfactory performance, a *Certificate of Conditional Approval to Use the Product in DPWH Projects* shall be issued to the proponent at the end of the prescribed monitoring period. This certificate shall be valid for five (5) years and shall include the product's application and specifications as well as the laboratory and field tests requirements for accepting the product when used in DPWH projects. However, when the product is used in DPWH projects during the period when the product use is under conditional approval, the product proponent will give a warranty period of one (1) year. The contractor to be commissioned shall likewise follow the terms and conditions set by the Department in implementing a regular infrastructure project.

3.3.2 Should one of the pilot trials exhibit unsatisfactory performance, the proponent may be allowed to construct another pilot trial. However, the small-scale pilot trials shall in no case be more than three (3). The same procedures shall govern the construction of a third pilot trial. Restoration or maintenance of the failed sections shall be borne by the proponent.

3.3.3 Should both pilot trials, or two (2) out of three (3) pilot trials show unsatisfactory performance, the product shall be outrightly rejected for use in DPWH projects.



### **3.4 Conduct of Large-Scale Trial**

After the issuance a of *Certificate of Conditional Approval* and should the proponent desire to continue, a large-scale trial, at least one kilometer long but not more than five (5) km, shall be recommended for construction to verify further the performance of the product. The construction period of the large-scale trial should be within the five (5) years validity period of the Conditional Approval.

- 3.4.1 Upon conforme of the proponent, a large-scale trial, shall be scheduled for construction to verify the long-term performance of the product under local conditions, e.g. weather, traffic, etc.
- 3.4.2 The BRS shall identify the site for the construction of the large scale trial in accordance with the criteria for pilot project site selection as presented in Annex A.
- 3.4.3 The proponent shall be informed of the site of the large scale trial and his conforme shall be secured. If the proponent disagrees, the BRS will re-identify another site until such time that the selected site would be agreeable to both parties.
- 3.4.4 Upon conforme of the proposal, BRS shall lay the necessary ground work for the preliminary and detailed engineering works, as well as the funding and procurement of contractors, if necessary, in coordination with the concerned DPWH implementing office.
- 3.4.5 The large scale trial shall be constructed under the joint supervision of BRS, the DPWH implementing office and the proponent. The proponent shall supply free of charge the product to be used in the construction of pilot trials.
- 3.4.6 Upon completion of the large scale trial, the BRS, the DPWH implementing office, and the proponent shall conduct a final inspection. The proponent shall give a warranty period of at least one (1) year. The contractor to be commissioned shall likewise follow the terms and conditions set by the Department in implementing a regular infrastructure project.



3.4.7 The BRS and the proponent shall monitor the performance of the product (soil stabilizer, concrete additives and asphalt admixtures) for one (1) year, monthly during the first six (6) months and then quarterly during the next six (6) months. However, cracks/potholes repair products shall be monitored only for six (6) months, monthly during the first three (3) months, and a final inspection at the end of sixth month.

For other products, whose application is not mentioned above, the monitoring period will be jointly determined by BRS and the proponent.

3.4.8 The BRS shall make a final evaluation of the large scale trial, and a copy of the report shall be furnished to the proponent.

### 3.5 Issuance of Accreditation Certificate

If the large scale trial exhibits satisfactory performance after the one year warranty period, a Certificate of Product Accreditation, signed by the Secretary, shall be issued to the proponent. A Department Order with corresponding specifications will be prepared relative to the use of the product in DPWH projects. The specification will give details on the product description, characteristics of the material, test methods, construction methods, equipment to be used and the basis of payment.

However, should the large-scale trial show unsatisfactory performance, the product shall be outrightly rejected.

## 4.0 Right of DPWH to Cancel Accreditation Certificate

The DPWH, after a thorough investigation and discussion with the proponent, has the right to cancel the Accreditation Certificate issued on the following grounds:

- Discovery of any fraudulent information on the product as furnished by the proponent
- When the manufacturer cancels the award/license of distributorship to the proponent
- When the product became ineffective because of alteration in formulation

## CRITERIA FOR THE SELECTION OF PILOT PROJECT SITE

	Points (%)
1. Urgency/Necessity of the project -----	25
1.1 Addresses problems relative to DPWH operations as well as the construction industry	
2. Benefits derived from the project -----	20
2.1 Countryside development	
2.2 Labor-intensive/use of indigenous materials	
2.3 Cost reduction	
2.4 Economic benefits-cost ratio	
3. Feasibility of the site -----	15
3.1 Availability of materials	
3.2 Working space for equipment	
3.3 Stockpiling of materials	
3.4 Traffic deviations	
3.5 Safety of personnel	
4. Existing Road Condition -----	15
4.1 Traffic Condition	
4.2 Road surface condition	
4.3 Subgrade condition	
4.4 Drainage condition	
4. Probability of success (risk factor) in attaining ----- The desired output/s considering the following:	15
5.1 Availability of competent manpower	
5.2 Availability of appropriate equipment and facilities	
5.3 Funding requirement	
5.4 Completion time	
5.5 Availability of necessary technical information	
6. Innovation -----	10
6.1 New/necessary technological development to Support the infrastructure program of DPWH	
6.2 Utilization of waste materials/by-products -----	

100%

ip

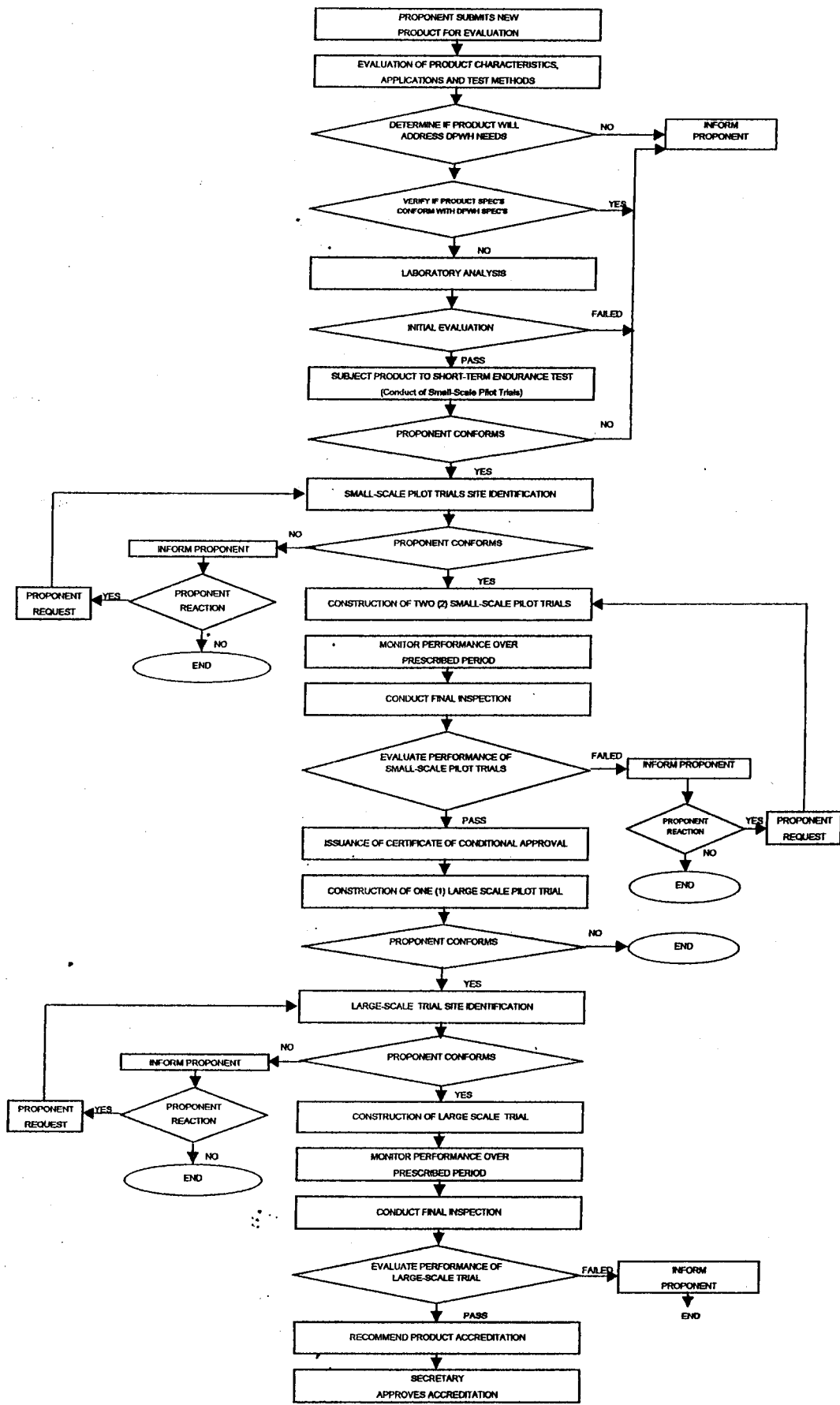


# EVALUATION OF PILOT RESEARCH PROJECT SITES

NAME OF PROJECT	PROPOSED LOCATION	CRITERIA						TOTAL POINTS	RANK	REMARKS
		1	2	3	4	5	6			

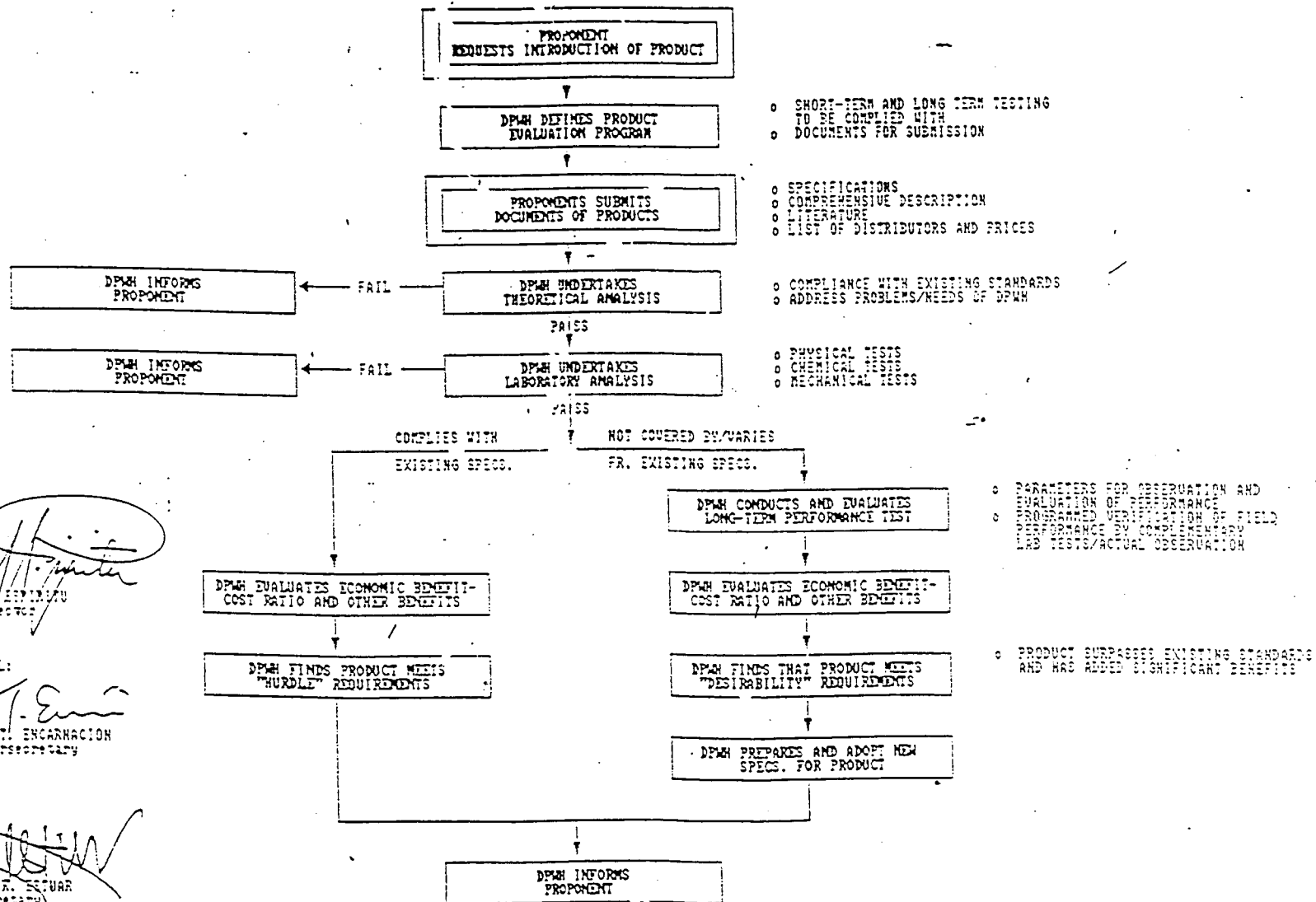
MS

PRODUCT ACCREDITATION SCHEME



REPUBLIC OF THE PHILIPPINES  
DEPARTMENT OF PUBLIC WORKS AND HIGHWAYS  
OFFICE OF THE SECRETARY

FLOWCHART OF PROFORMA PROCEDURES: FOR PRODUCT EVALUATION



Submitted by:

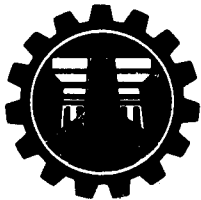
JOSE M. ESPINOSA  
Director

RECOMMENDING APPROVAL:

TEODORO T. ENCARNACION  
Undersecretary

APPROVED:

FIDELIO R. ESTUAR  
Secretary



REPUBLIC OF THE PHILIPPINES  
DEPARTMENT OF PUBLIC WORKS AND HIGHWAYS  
OFFICE OF THE SECRETARY  
MANILA

11

**CERTIFICATE OF PRODUCT ACCREDITATION**

Having complied the test requirements for \_\_\_\_\_,  
(*Item of Work*)  
and showed satisfactory performance after the prescribed monitoring period of the  
constructed large-scale trials, approval to use \_\_\_\_\_  
(*Name of Product*)  
in DPWH projects is issued to \_\_\_\_\_ subject to  
(*Name of Proponent/Company*)  
the attached tests and construction requirements.

Approval No. : \_\_\_\_\_  
Date Issued : \_\_\_\_\_  
Place Issued : \_\_\_\_\_

**SIMEON A. DATUMANONG**  
Secretary



Republic of the Philippines  
DEPARTMENT OF PUBLIC WORKS AND HIGHWAYS  
BUREAU OF RESEARCH AND STANDARDS  
EDSA, Diliman, Quezon City

12

**CERTIFICATE OF CONDITIONAL APPROVAL**

Having complied the test requirements for \_\_\_\_\_,  
(*Item of Work*)  
and showed satisfactory performance after the prescribed monitoring period of the  
constructed small-scale trials, approval to use \_\_\_\_\_  
(*Name of Product*)  
in DPWH projects is issued to \_\_\_\_\_ subject to  
(*Name of Proponent/Company*)  
warranty on the performance of the product for \_\_\_\_\_  
(*months/year*)  
after construction.

Conditional Approval No. : \_\_\_\_\_  
Date Issued : \_\_\_\_\_  
Place Issued : \_\_\_\_\_  
Validity : \_\_\_\_\_

**ANTONIO V. MOLANO, JR.**  
OIC-Bureau Director