



Republic of the Philippines  
DEPARTMENT OF PUBLIC WORKS AND HIGHWAYS  
**OFFICE OF THE SECRETARY**  
Manila

097.13.DA24  
12.23.2018

19 NOV 2018

DEPARTMENT ORDER )

NO. 171 )

Series of 2018 )

**SUBJECT: REVISED DESIGN OF STANDARD  
DPWH DISTRICT ENGINEERING  
OFFICE BUILDING AND DESIGN OF  
STANDARD DPWH REGIONAL OFFICE  
BUILDING**

In order to provide a uniform design that will instill the identity of this Department, the standard design for all Regional Office (RO) and District Engineering Office (DEO) buildings are hereby prescribed. Henceforth, the following guidelines shall be observed in the construction/renovation of the said buildings:

1. The attached revised design plan of the Two (2) Storey Standard DPWH DEO Building with Roof deck (Annex A-1 to A-3) shall be adopted for the construction of a new DEO building. The new exterior design features and its color scheme as shown in the elevations (Annex A-4 to A5) and perspective (Annex A-6 to A12) shall be strictly followed.
2. The attached design plan of the Two (2) Storey Standard DPWH RO Building with Roof deck (Annex B-1 to B-3) shall be adopted for the construction of a new RO building wherein the standard exterior design features and its color scheme as shown in the elevations (Annex B-4 to B-5) and perspective (Annex B-6 to B-12) shall be strictly followed.
3. The roof deck of the RO and DEO buildings shall be designed as space or area for other purposes/ functions such as a roof garden (greenery area) and solar panel system (sustainable electricity source) in compliance with the Green Building Code.
4. For the construction of a new RO and DEO buildings, the concerned implementing office shall prepare and approve the required Detailed Architectural and Engineering Design (DAED) plan and its supporting documents (i.e. Structural Analysis, Quantity Calculations, Bill of Quantities, DUPA, etc.).
5. In case the standard plan cannot be accommodated in the proposed site of the new RO or DEO building, the concerned implementing office shall prepare and approve the design modification and supporting documents but the design features and its color scheme shall conform to the revised/standard plan.
6. Existing RO, DEO and other existing DPWH buildings shall be renovated adopting the exterior design features (glazed aluminum curtain wall system, bush hammered finish wall, concrete vertical sunbreakers) and color scheme conforming to the standard plans.

7. Landscaping at deck roof (pocket garden) and exterior perimeter side of the building at ground floor shall be provided.

The approved standard plans for the conceptual design of the DPWH RO and DEO Buildings can also be accessed in the DPWH Website ([http://www.dpwhnet.gov.ph/dpwh/references/standard\\_design](http://www.dpwhnet.gov.ph/dpwh/references/standard_design)).

This Order supersedes Department Order No. 81, series of 2012 and shall take effect immediately.



**MARK A. VILLAR**  
Secretary

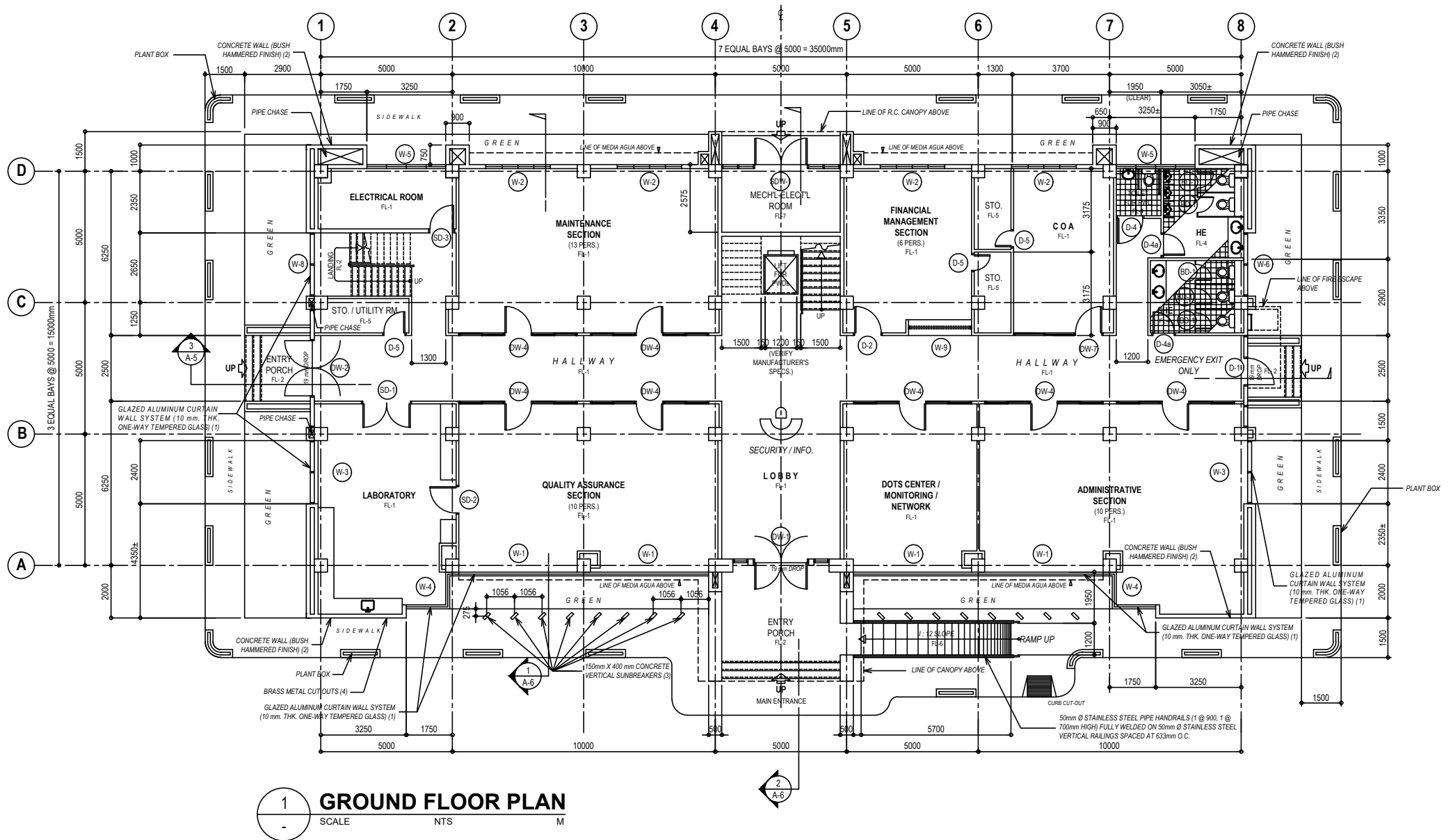
5.1.5 FGS/KCM/JPI/LND

Department of Public Works and Highways  
Office of the Secretary

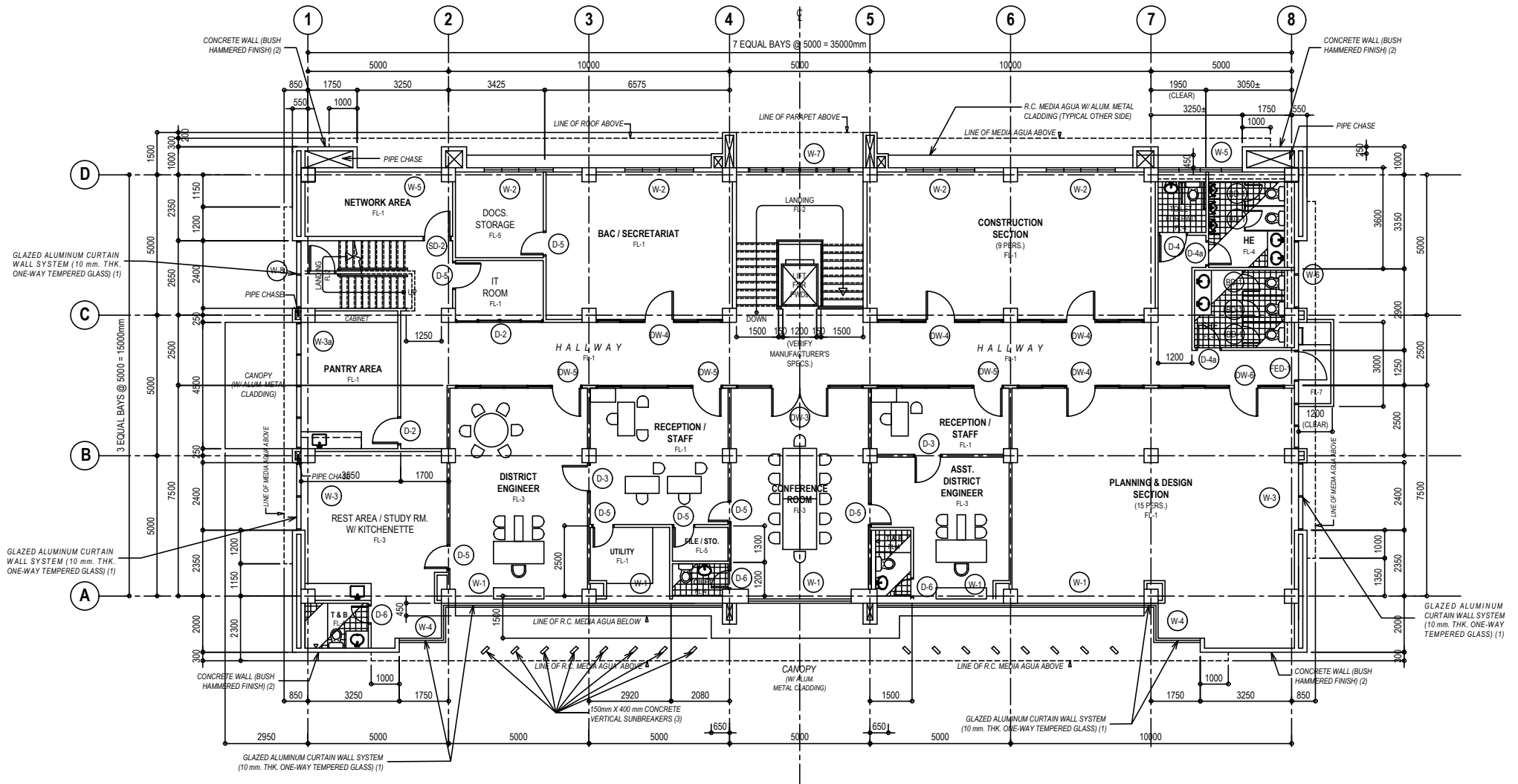


WIN8R01493

## ANNEX A-1



## ANNEX A-2

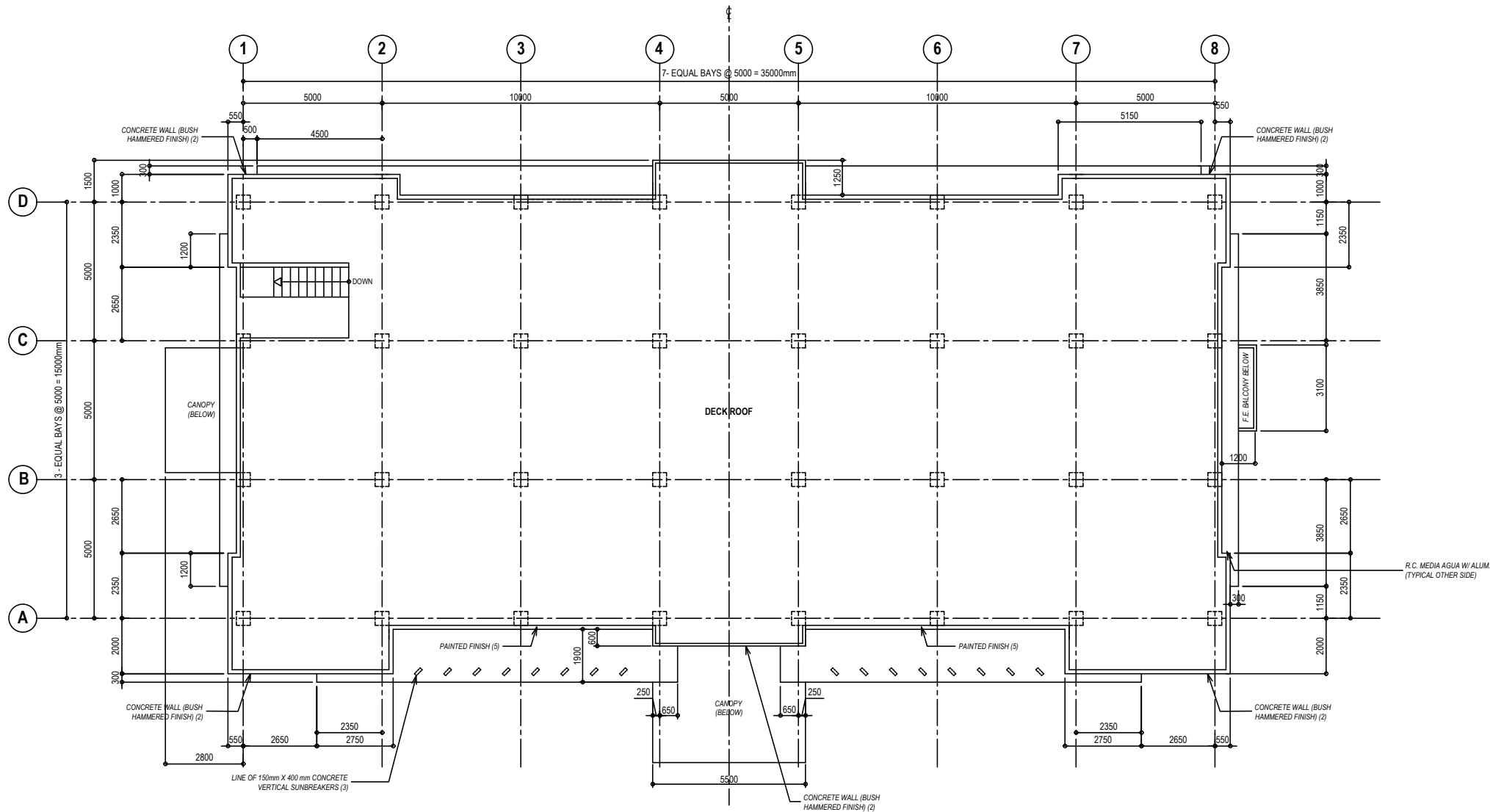


**1 SECOND FLOOR PLAN**

SCALE NTS M



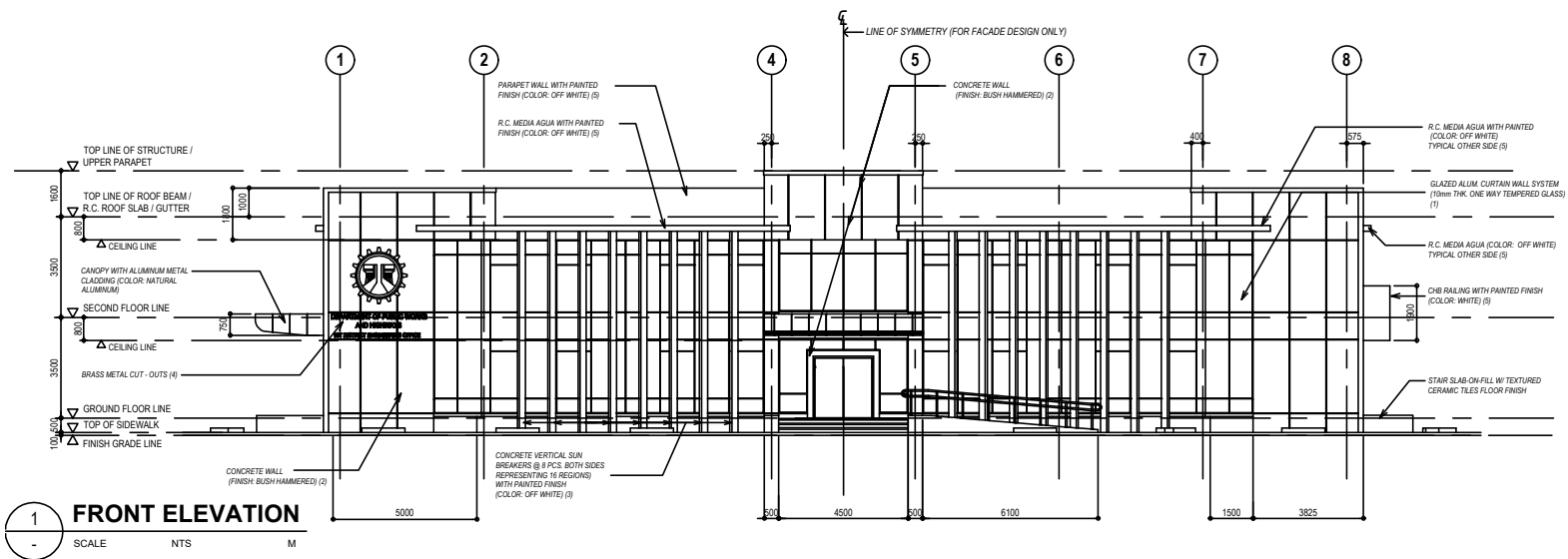
# ANNEX A-3



1 DECK ROOF PLAN

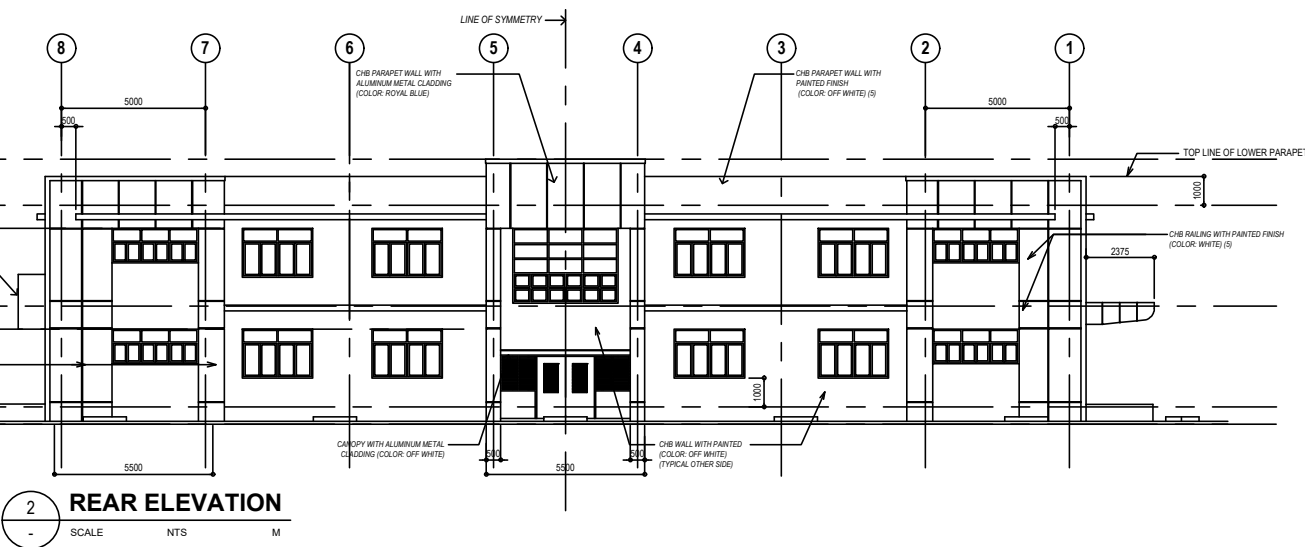
SCALE NTS M

# ANNEX A-4



## LEGEND:

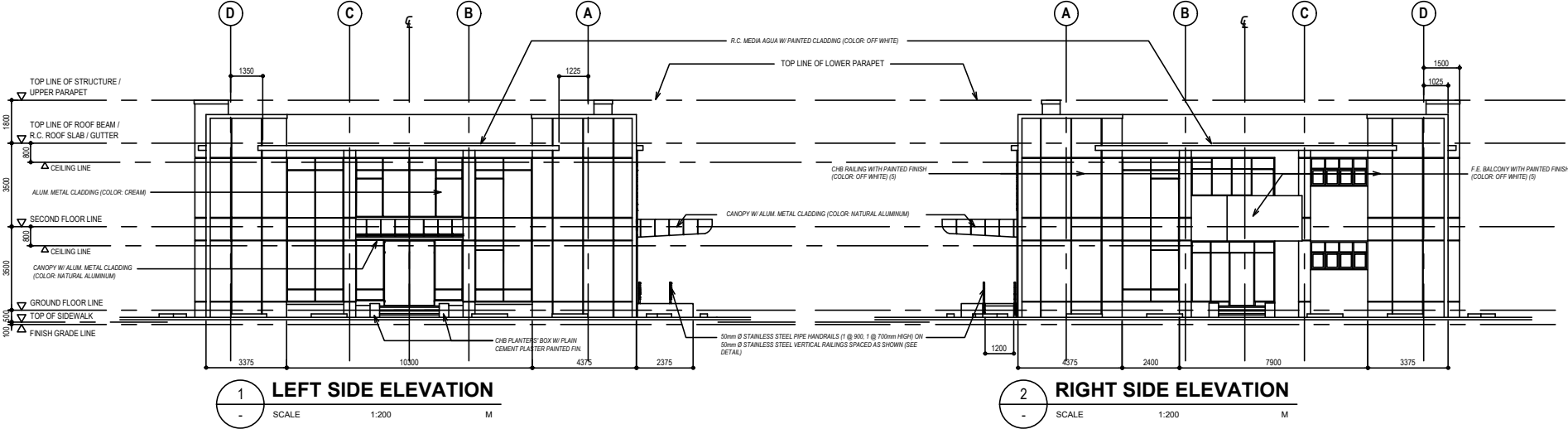
1. GLAZED ALUM. CURTAIN WALL SYSTEM (10mm THK. ONE WAY TEMPERED GLASS)
2. CONCRETE WALL (BUSH HAMMERED FINISH)
3. CONCRETE VERTICAL SUNBREAKERS
4. BRASS METAL CUT-OUT
5. PAINTED FINISH



# ANNEX A-5

LEGEND:

- 1. GLAZED ALUM. CURTAIN WALL SYSTEM (10mm THK. ONE WAY TEMPERED GLASS)
- 2. CONCRETE WALL (BUSH HAMMERED FINISH)
- 3. CONCRETE VERTICAL SUNBREAKERS
- 4. BRASS METAL CUT-OUT
- 5. PAINTED FINISH









1. GLAZED ALUM. CURTAIN WALL SYSTEM (10mm THK. ONE-WAY TEMPERED GLASS)
2. CONCRETE WALL (BUSH HAMMERED FINISH)
3. CONCRETE VERTICAL SUNBREAKERS
4. BRASS METAL CUT OUTS
5. PAINTED FINISH

## ANNEX A-7



## FRONT VIEW



1. GLAZED ALUM. CURTAIN WALL SYSTEM (10mm THK. ONE-WAY TEMPERED GLASS)
2. CONCRETE WALL (BUSH HAMMERED FINISH)
3. CONCRETE VERTICAL SUNBREAKERS
4. BRASS METAL CUT OUTS
5. PAINTED FINISH

## ANNEX A-8



LEFT SIDE VIEW



1. GLAZED ALUM. CURTAIN WALL SYSTEM (10mm THK. ONE-WAY TEMPERED GLASS)
2. CONCRETE WALL (BUSH HAMMERED FINISH)
3. CONCRETE VERTICAL SUNBREAKERS
4. BRASS METAL CUT OUTS
5. PAINTED FINISH

## ANNEX A-9



## REAR VIEW



1. GLAZED ALUM. CURTAIN WALL SYSTEM (10mm THK. ONE-WAY TEMPERED GLASS)
2. CONCRETE WALL (BUSH HAMMERED FINISH)
3. CONCRETE VERTICAL SUNBREAKERS
4. BRASS METAL CUT OUTS
5. PAINTED FINISH

## ANNEX A-10



## REAR - RIGHT SIDE VIEW



1. GLAZED ALUM. CURTAIN WALL SYSTEM (10mm THK. ONE-WAY TEMPERED GLASS)
2. CONCRETE WALL (BUSH HAMMERED FINISH)
3. CONCRETE VERTICAL SUNBREAKERS
4. BRASS METAL CUT OUTS
5. PAINTED FINISH

## ANNEX A-11



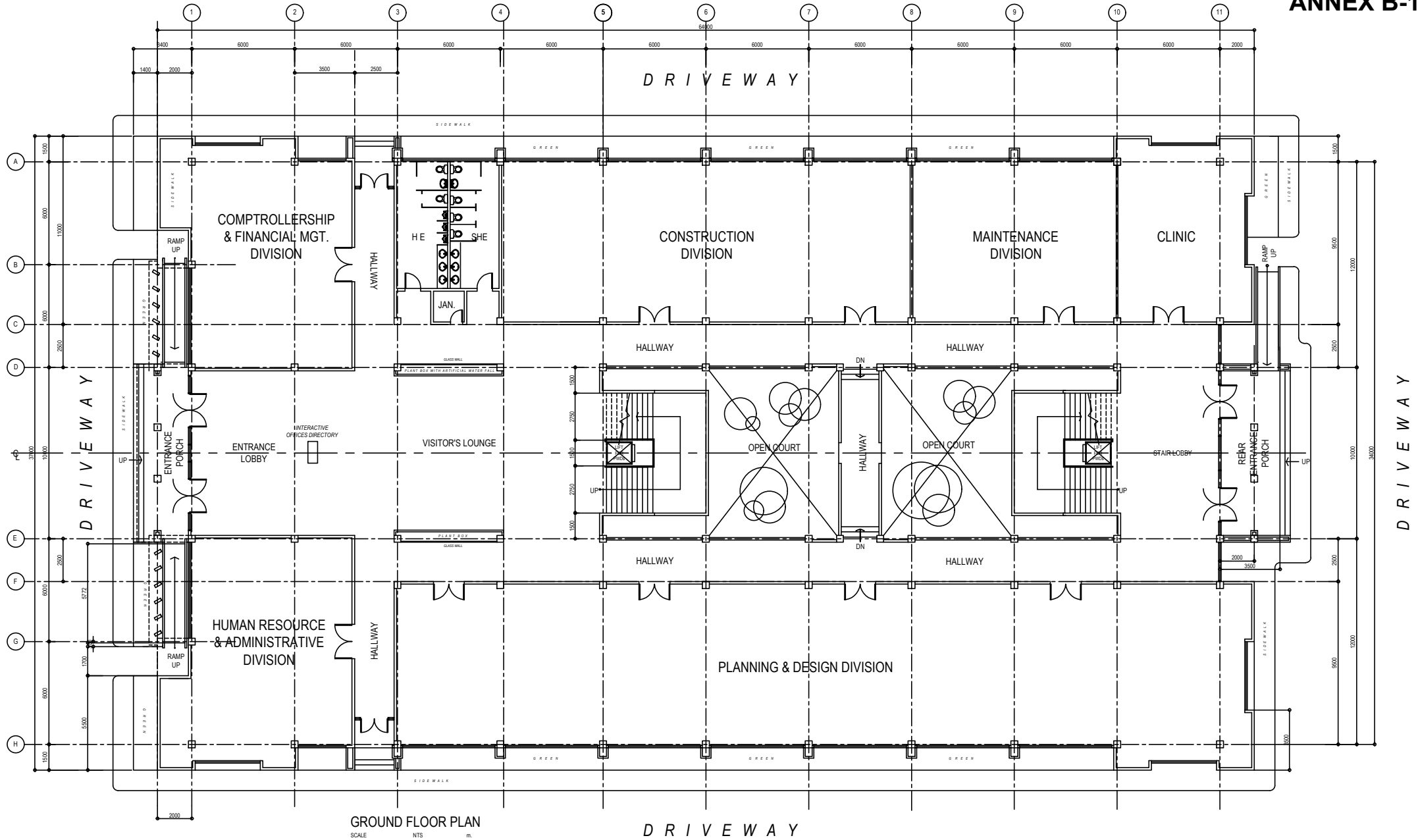
FRONT - RIGHT SIDE VIEW



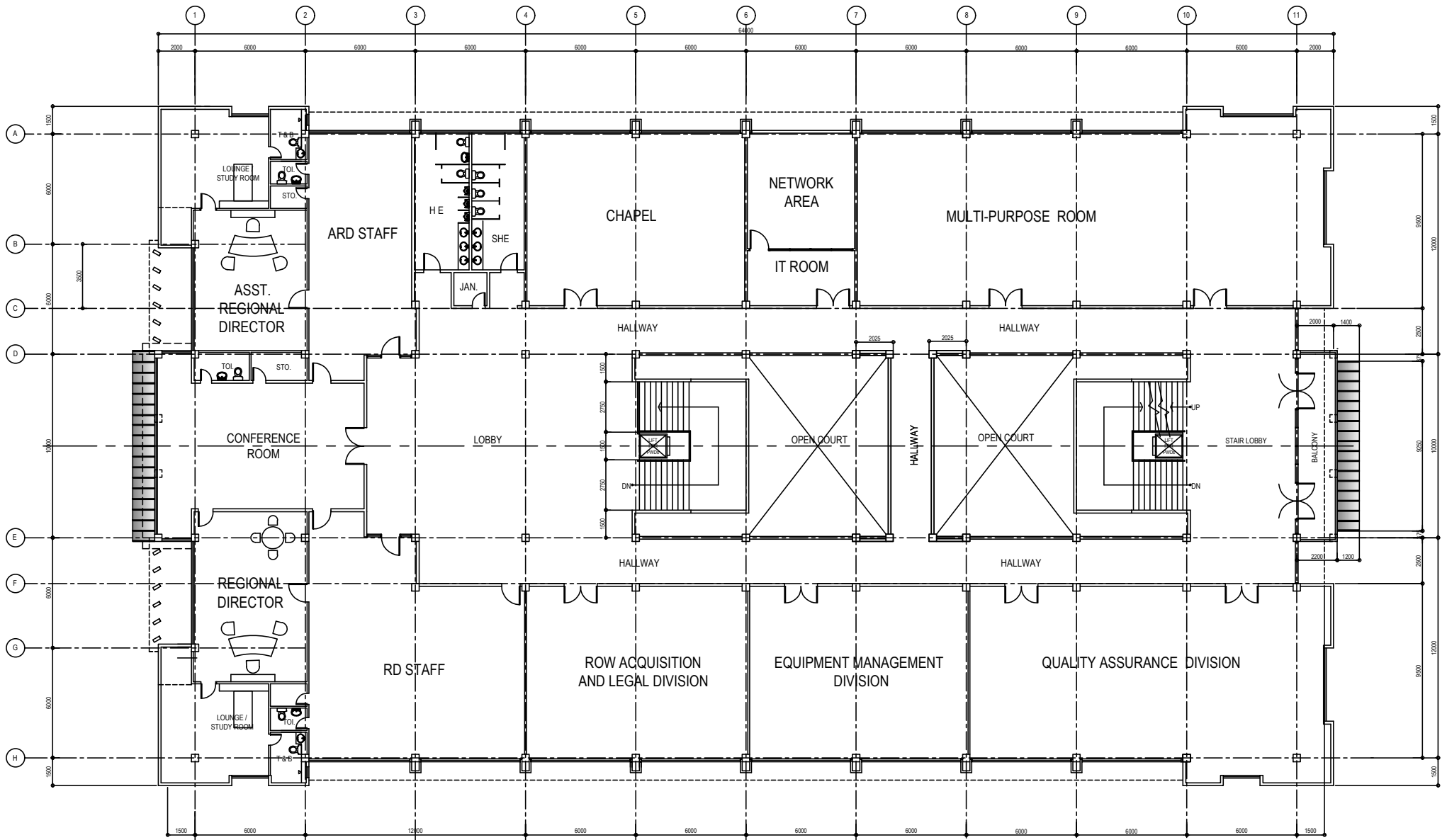


STREET VIEW

GROUND FLOOR PLAN

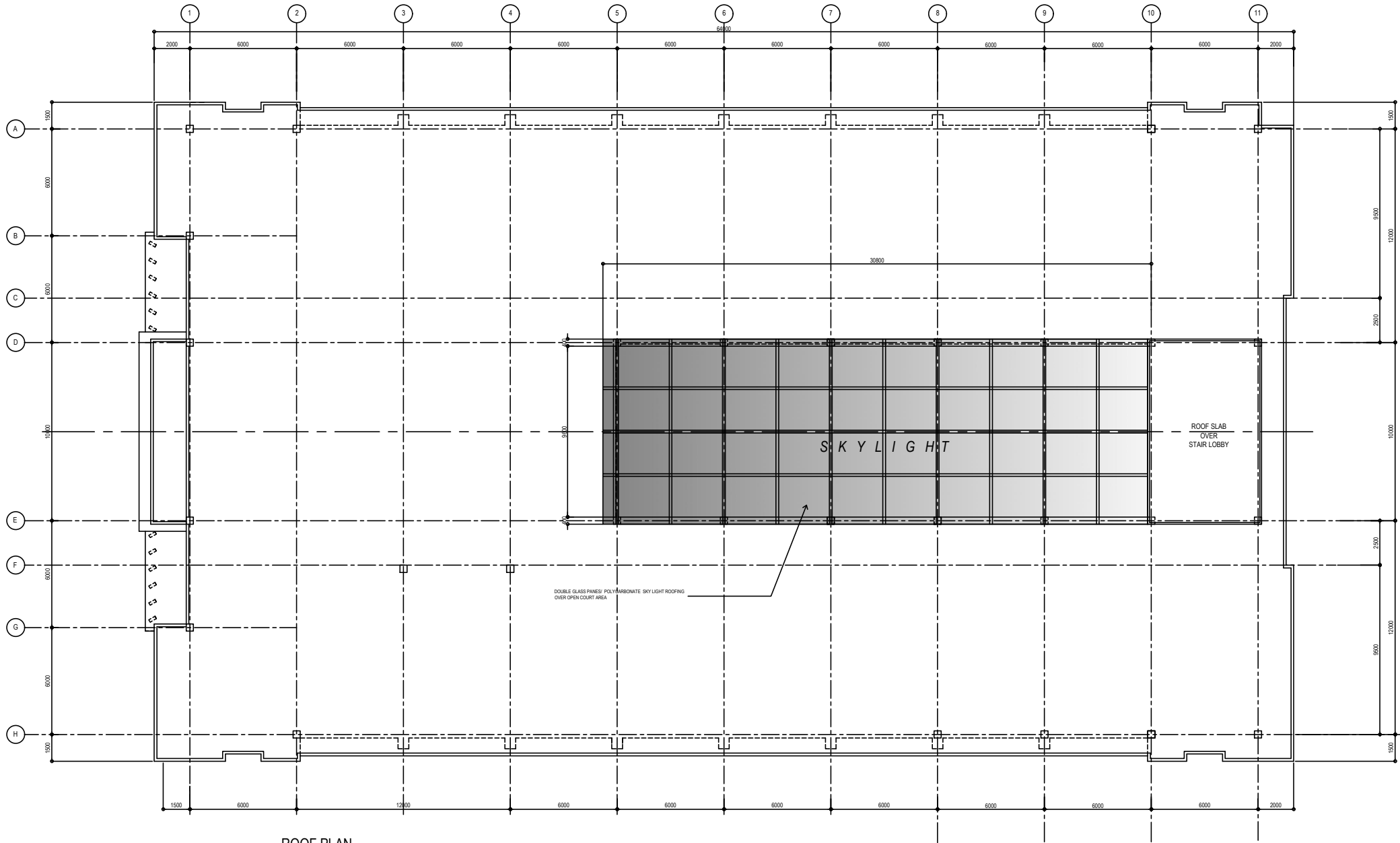






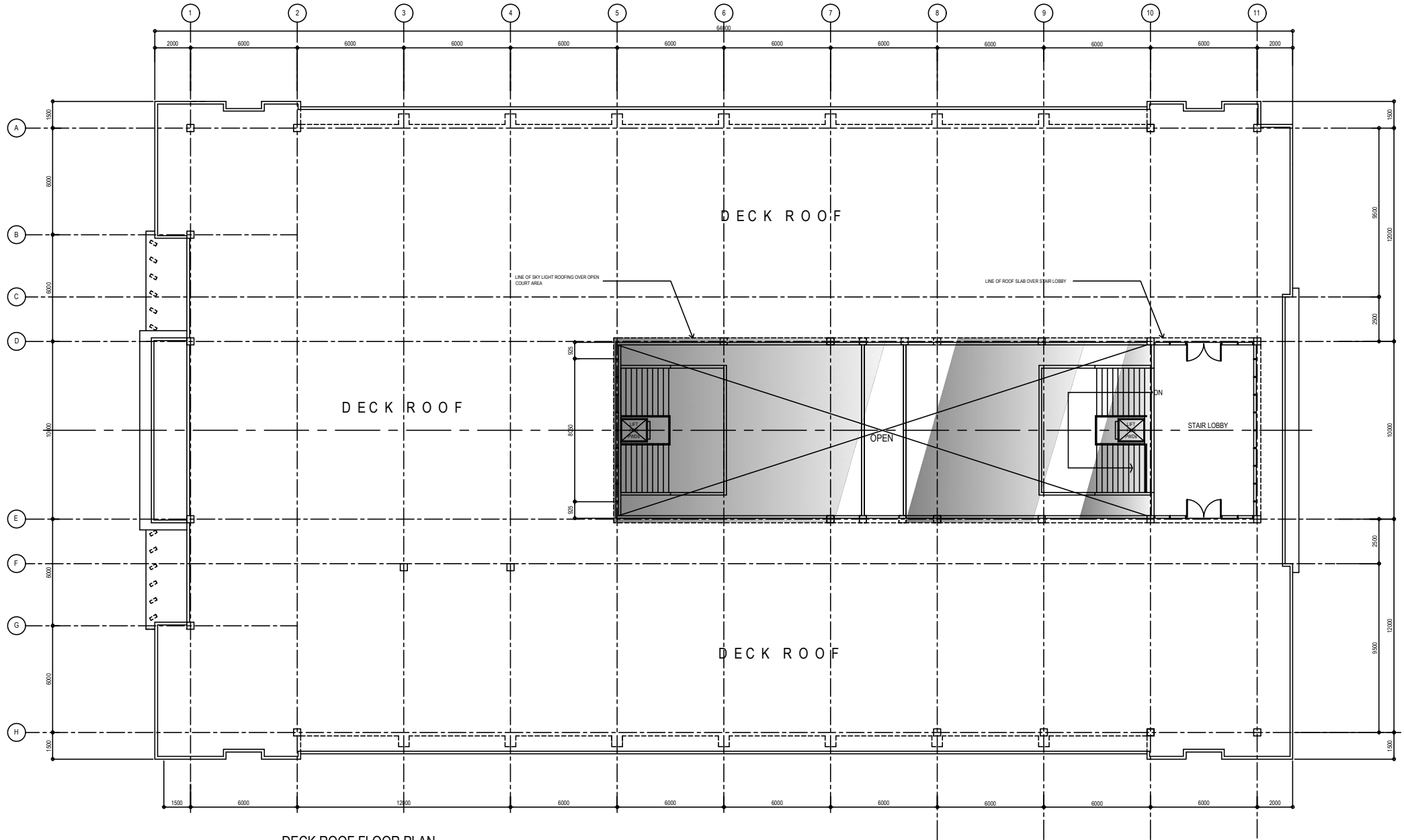
SECOND FLOOR PLAN  
SCALE NTS m.





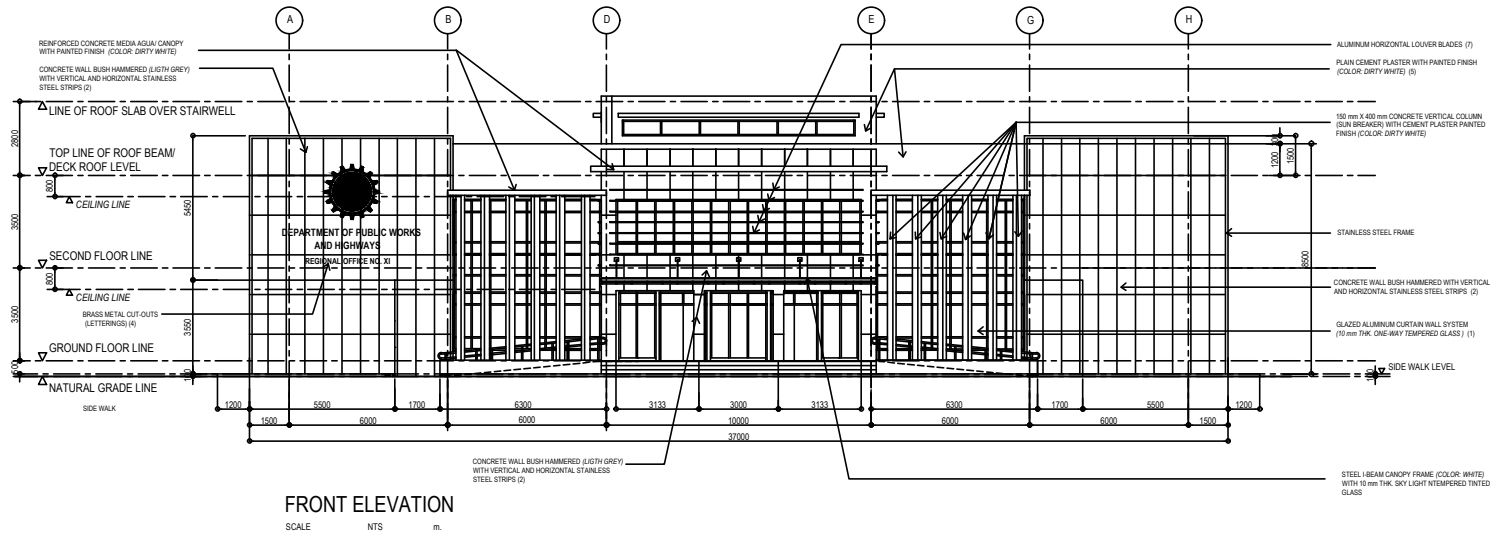
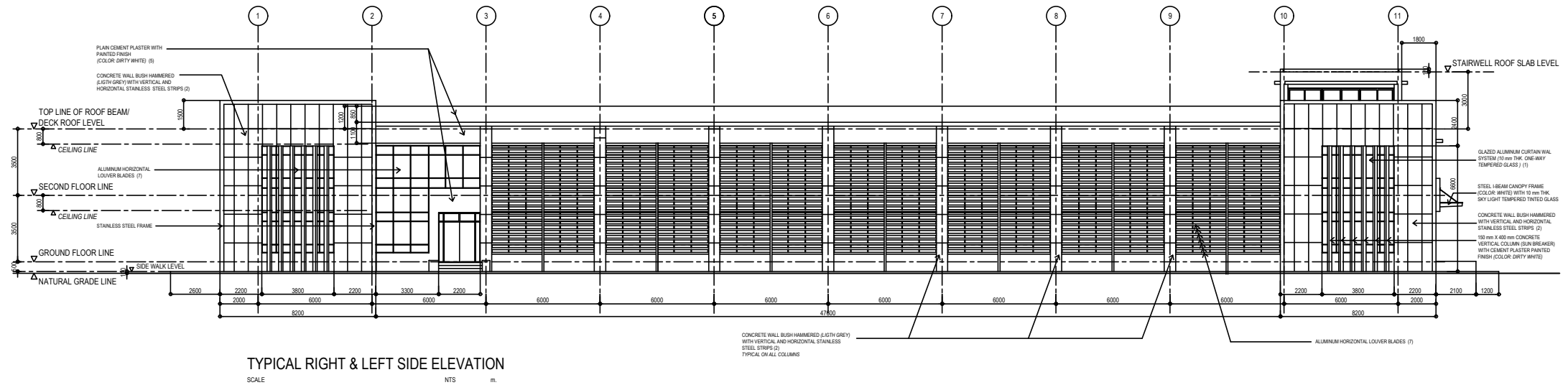
ROOF PLAN

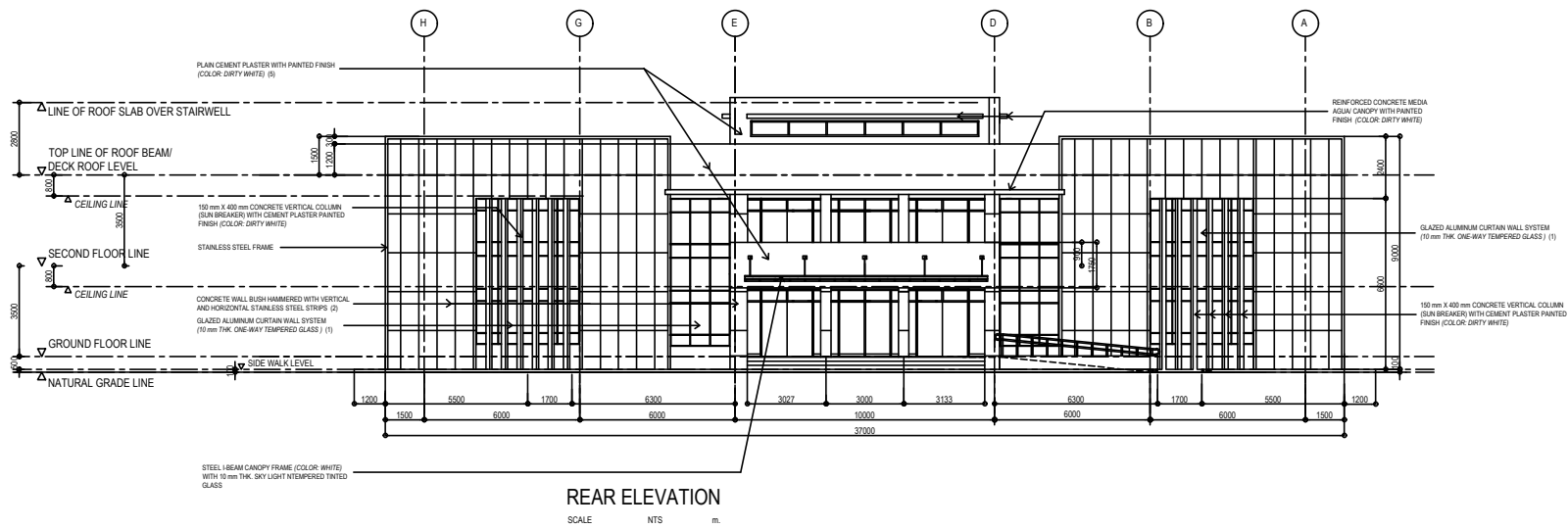
SCALE NTS m.



DECK ROOF FLOOR PLAN

## ANNEX B-4













VIEW OF ROOF DECK



1. GLAZED ALUM. CURTAIN WALL SYSTEM (10mm THK. ONE-WAY TEMPERED GLASS)
2. CONCRETE WALL (BUSH HAMMERED FINISH)
3. CONCRETE VERTICAL SUNBREAKERS
4. BRASS METAL CUT OUTS
5. PAINTED FINISH

6. SOLAR PANEL
7. ALUMINUM HORIZONTAL LOUVERS

## ANNEX B-8



FRONT - LEFT SIDE VIEW



1. GLAZED ALUM. CURTAIN WALL SYSTEM (10mm THK. ONE-WAY TEMPERED GLASS)
2. CONCRETE WALL (BUSH HAMMERED FINISH)
3. CONCRETE VERTICAL SUNBREAKERS
4. BRASS METAL CUT OUTS
5. PAINTED FINISH

6. SOLAR PANEL
7. ALUMINUM HORIZONTAL LOUVERS

## ANNEX B-9



LEFT SIDE VIEW



1. GLAZED ALUM. CURTAIN WALL SYSTEM (10mm THK. ONE-WAY TEMPERED GLASS)
2. CONCRETE WALL (BUSH HAMMERED FINISH)
3. CONCRETE VERTICAL SUNBREAKERS
4. BRASS METAL CUT OUTS
5. PAINTED FINISH

6. SOLAR PANEL
7. ALUMINUM HORIZONTAL LOUVERS

## ANNEX B-10



REAR - LEFT SIDE VIEW



1. GLAZED ALUM. CURTAIN WALL SYSTEM (10mm THK. ONE-WAY TEMPERED GLASS)
2. CONCRETE WALL (BUSH HAMMERED FINISH)
3. CONCRETE VERTICAL SUNBREAKERS
4. BRASS METAL CUT OUTS
5. PAINTED FINISH

6. SOLAR PANEL
7. ALUMINUM HORIZONTAL LOUVERS

## ANNEX B-11



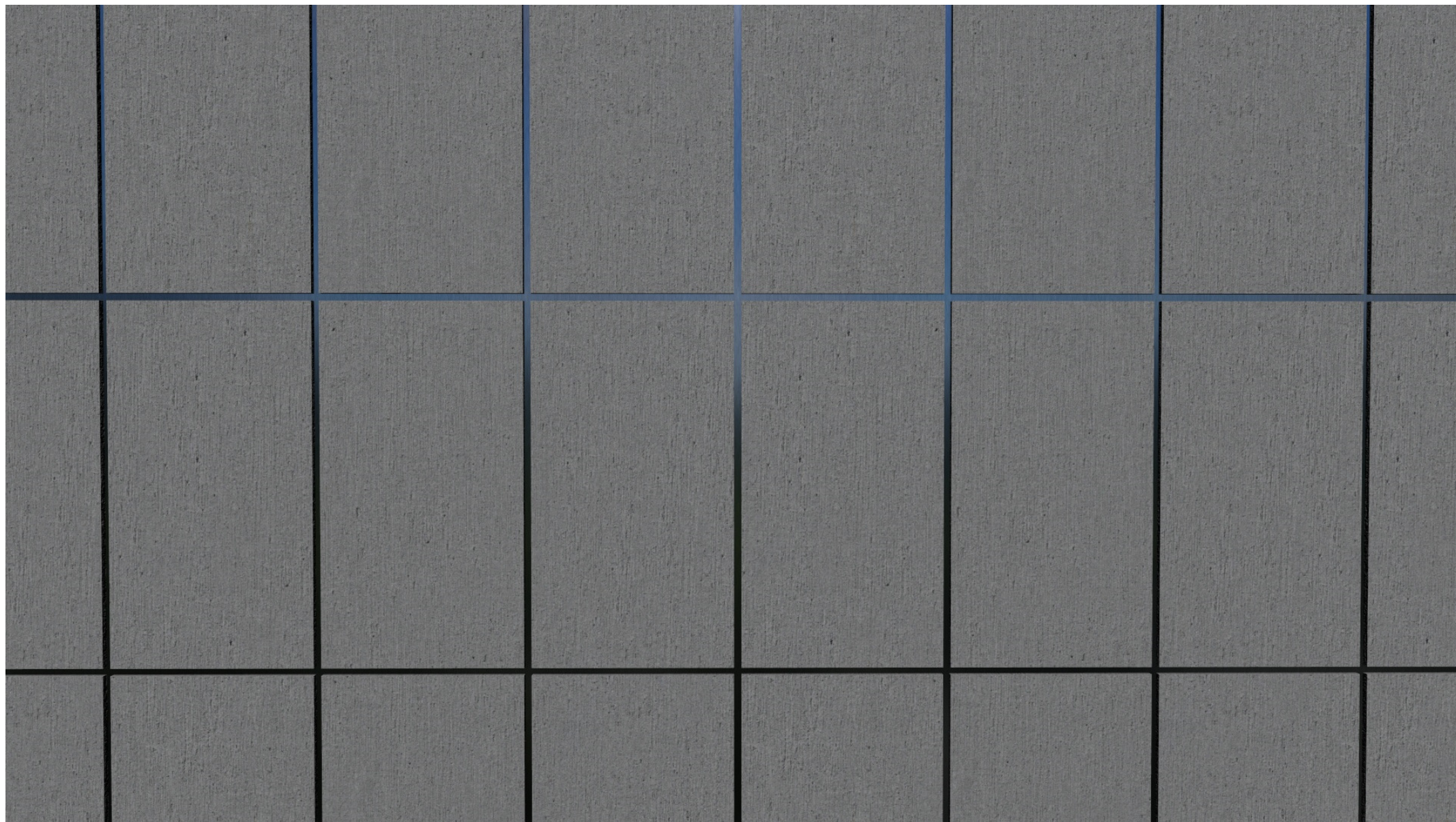
REAR - RIGHT SIDE VIEW





STREET VIEW





CONCRETE BUSH HAMMERED WITH STAINLESS STEEL STRIPS FINISH