



Republic of the Philippines
DEPARTMENT OF PUBLIC WORKS AND HIGHWAYS
OFFICE OF THE SECRETARY
Manila

097.13 DPWH

DS-29-2012

MAY 28 2012

DEPARTMENT ORDER)

No. 34)
Series of 2012 *KKBA DS-29-12*)

**SUBJECT : GUIDELINES ON THE
IMPLEMENTATION OF
PEDESTRIAN REFUGE
ISLAND ALONG
NATIONAL ROADS**

In order to provide additional safety measures for pedestrians crossing the national road and as a suppletoary to D.O. No. 62, series of 2011, pedestrian refuge island shall be provided along the center of the carriageway where pedestrians may safely wait until vehicular traffic clears. Henceforth, the following guidelines on the proper location and installation of pedestrian refuge island in conjunction with the pedestrian crossing markings are hereby prescribed:

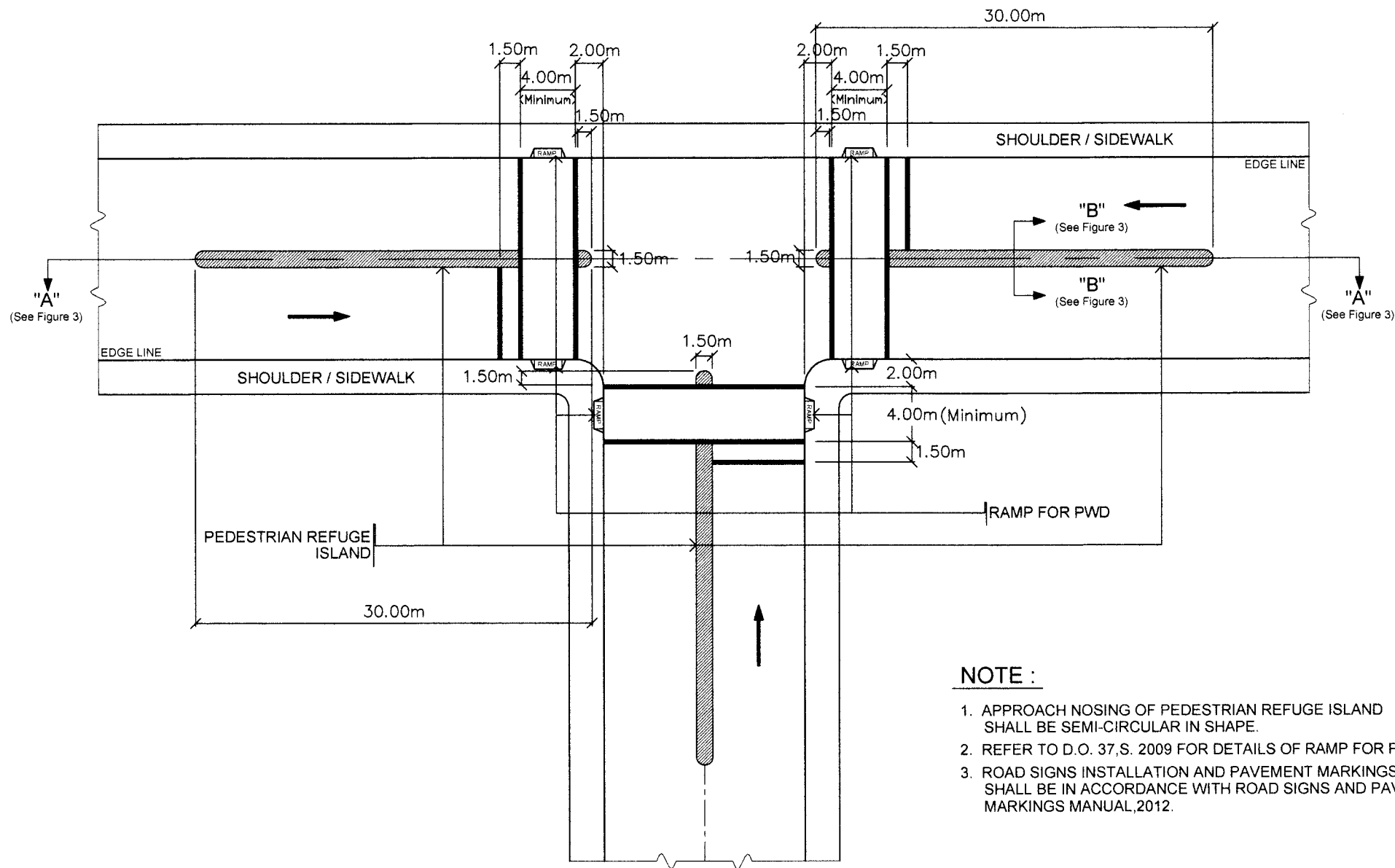
1. Pedestrian refuge island shall be provided in roadways having clear carriageway width of at least 4 lanes.
2. The island shall be installed at the following locations where there are concentration of pedestrians:
 - 2.1 In front of school, church, market and other areas for public use.
 - 2.2 At approaches of unsignalized intersection.
3. The island shall have a minimum width of 1.50 meters and total length of 30.0 meters, (Figures 1 and 2).
4. Minimum distance between two consecutive pedestrian refuge island along the highway shall not be less than 500 meters.
5. At-grade crosswalk passage shall be provided for the entire width of refuge island having width of less than 5.0 meters in order to provide convenient accessibility for Persons With Disabilities (PWD), (Figures 3 and 4). For refuge island having width of more than 5.0 meters, ramp for PWD shall be provided.
6. All approach nosing of pedestrian refuge island shall be provided with arrow sign, pedestrian crossing warning signs and pavement markings, (Figure 5).
7. For roads having carriageway width of six (6) lanes or more, pedestrian overpass structure shall be provided instead of at-grade crosswalk.

This Order shall take effect immediately.


ROGELIO L. SINGSON
Secretary



WIN2101794

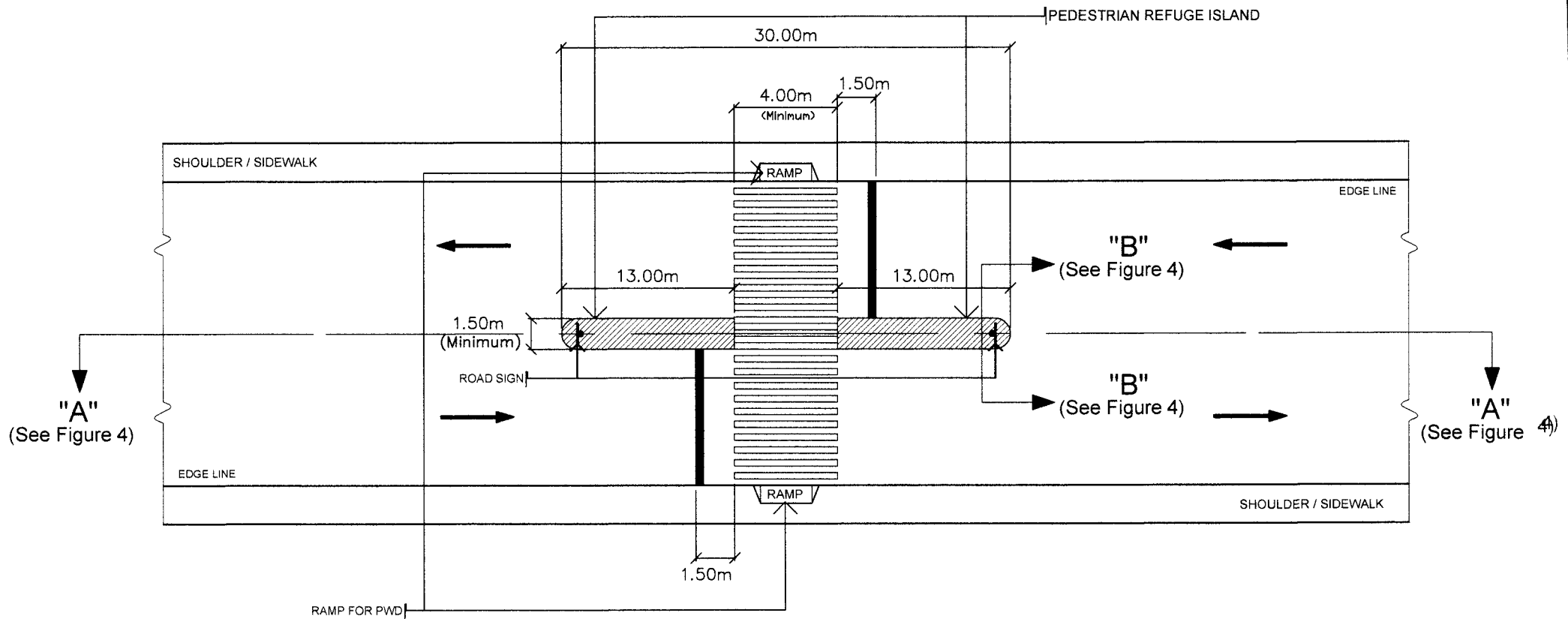


NOTE :

1. APPROACH NOSING OF PEDESTRIAN REFUGE ISLAND SHALL BE SEMI-CIRCULAR IN SHAPE.
2. REFER TO D.O. 37,S. 2009 FOR DETAILS OF RAMP FOR PWD.
3. ROAD SIGNS INSTALLATION AND PAVEMENT MARKINGS LAYOUT SHALL BE IN ACCORDANCE WITH ROAD SIGNS AND PAVEMENT MARKINGS MANUAL,2012.

PEDESTRIAN REFUGE ISLAND AT ROAD INTERSECTION

FIGURE 1

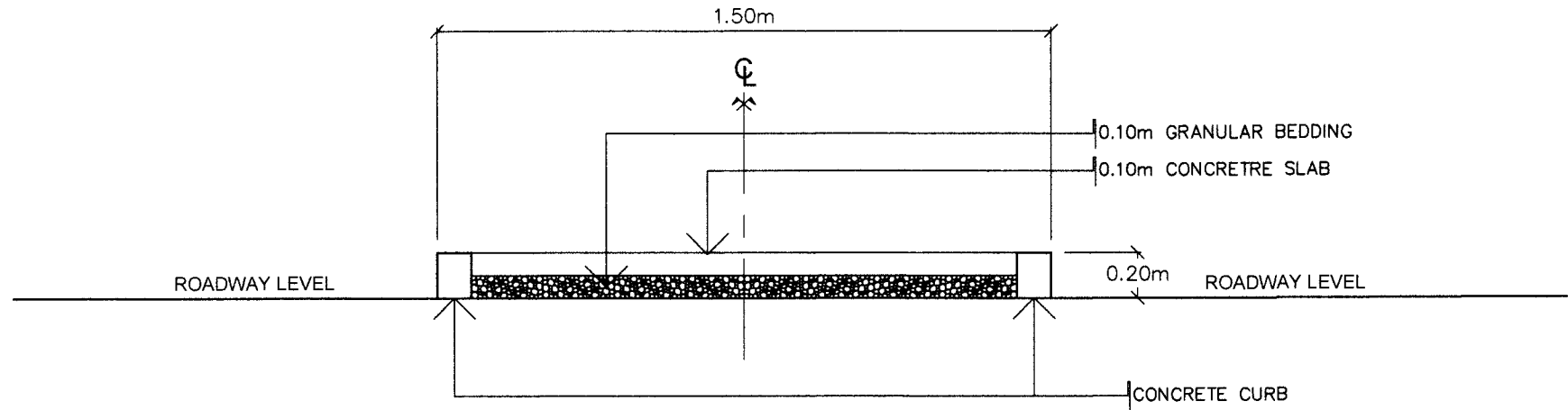


NOTE :

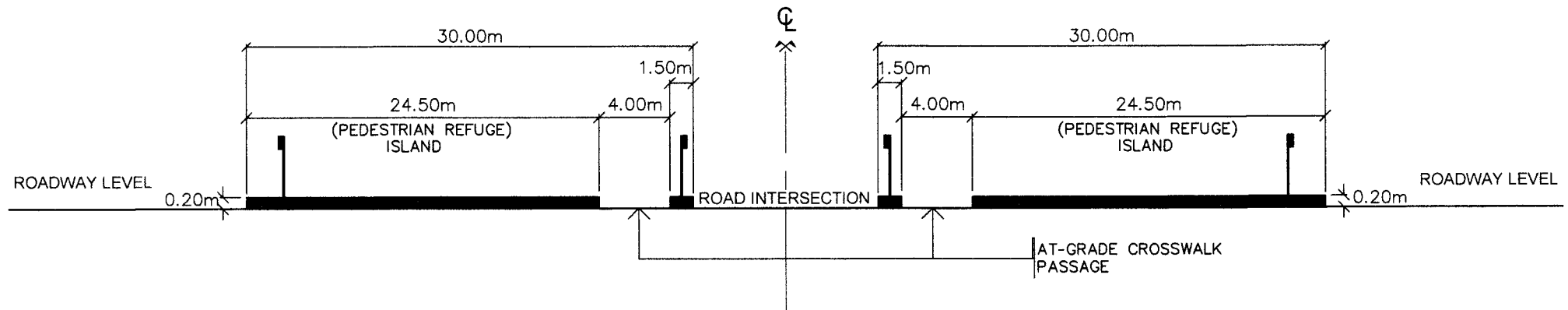
1. APPROACH NOSING OF PEDESTRIAN REFUGE ISLAND SHALL BE SEMI-CIRCULAR IN SHAPE.
2. REFER TO D.O. 37,S. 2009 FOR DETAILS OF RAMP FOR PWD.
3. ROAD SIGNS INSTALLATION AND PAVEMENT MARKINGS LAYOUT SHALL BE IN ACCORDANCE WITH ROAD SIGNS AND PAVEMENT MARKINGS MANUAL,2012.

PEDESTRIAN REFUGE ISLAND AT MID-BLOCK

FIGURE 2



DETAILS OF SECTION "B - B "



SECTION A - A PEDESTRIAN REFUGE ISLAND AT ROAD INTERSECTION

FIGURE 3

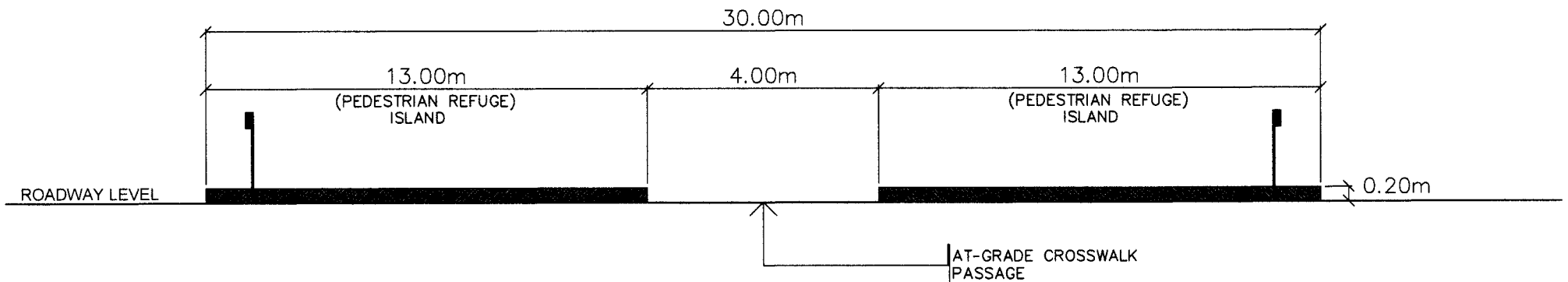
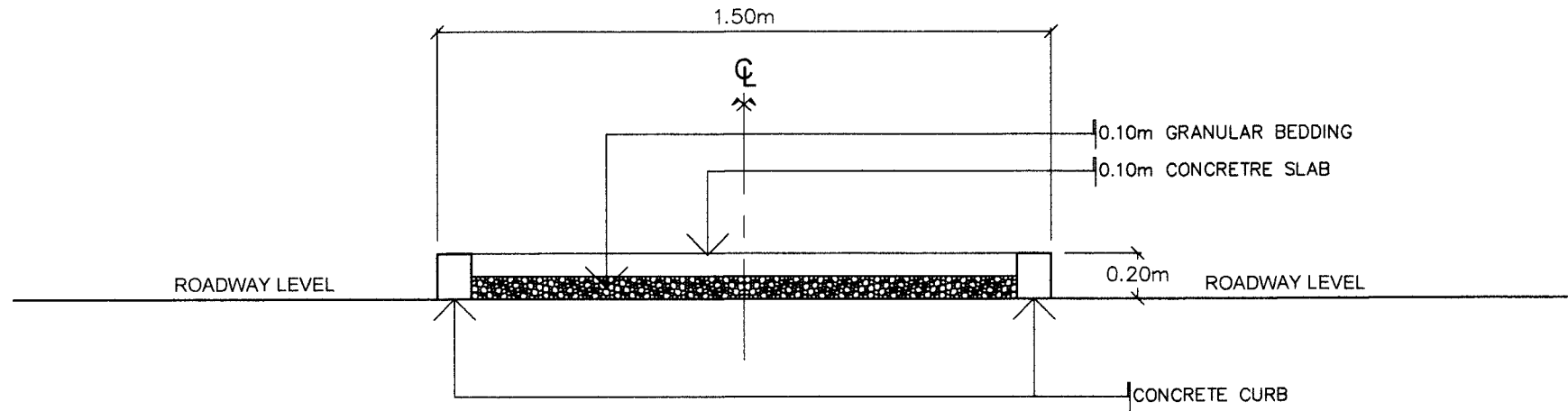


FIGURE 5