



Republic of the Philippines
DEPARTMENT OF PUBLIC WORKS AND HIGHWAYS
OFFICE OF THE SECRETARY
Manila

097.13 DPWH
23-10-2019

MAR 15 2019

DEPARTMENT ORDER)

NO. **31**)
Series of 2019)

**SUBJECT: REVISED GUIDELINES ON THE
INSTALLATION OF ROAD RIGHT-
OF-WAY (RROW) BOUNDARY
MARKER, KILOMETER POST, AND
STREET NAME ALONG NATIONAL
HIGHWAYS ON RURAL AND
URBAN AREAS**

To ensure proper and effective delineation of road-right-of-way limits of national roads, to properly inform the public about national roads that fall within the jurisdiction of DPWH, and to provide uniformity in design and features for kilometer post and street names, all Regional and District Engineering Offices are hereby directed to strictly comply with the following guidelines on the installation of RROW markers, kilometer posts and street names along national highways on rural and urban areas:

A. ROAD RIGHT-OF-WAY MARKER:

1. On rural and semi-urbanized area, RROW marker posts shall be installed following the design and specifications shown in Annexes "A-1" to "A-3". All information on the RROW boundary marker post shall be in black lettering on white background while post shall be painted with reflectorized yellow color. The RROW boundary marker posts shall be installed along the RROW limit line on each side of the road at one (1) kilometer interval as shown in Annex "B".
2. Along curve section on rural and semi-urbanized area, RROW marker shall be installed along the beginning, center and end of the horizontal curve as shown in Annex "C".
3. On highly urbanized area, RROW marker shall be concrete block embedded on the surface along the edge of concrete sidewalk on each side of the road at 200 meters interval as shown in Annex "D". All information on the RROW boundary marker concrete block shall be in black lettering on white background, while the border shall be painted with reflectorized yellow color.

B. KILOMETER POST:

1. Kilometer posts shall be installed on all primary and secondary national roads following the design and specification shown in Annexes "E-1" to "E-4". All existing kilometer posts along primary and secondary roads shall be removed and reinstalled along tertiary roads with proper relabeling.
2. Kilometer posts must never be moved or relabeled without consulting the Road and Bridge Information Application (RBIA) Section of the Statistics Division (SD) of the Planning Service. In the event of road conversion which necessitates installation of new set of kilometer posts, consultation with the SD should likewise be undertaken prior to installation.

3. Kilometer posts shall be installed on the right side of the road (along the direction away from the reference location) at one (1) kilometer interval as shown in Annex "B". It shall be located outside the shoulder at 2.50m (max.) from the edge of the road pavement. Where the shoulder is less than 2.0m, the post shall be located at 0.50m setback from the edge of the shoulder. Whenever there is an obstruction at the proposed location of kilometer post (i.e., bridge, junction, gateway, railroad crossing, etc.), offsetting should be done either backward or forward whichever is visible, and the corresponding chainages should be recorded and uploaded in the RBIA.
4. On section where there is existing or requirement for installation of guardrails, kilometer post shall be installed along guardrail face.
5. All information on the kilometer posts shall be in black lettering on white background, while the post shall be painted with reflectorized yellow color.

C. STREET NAME AND POST:

1. Street name and post shall be installed following the design and specifications shown in Annexes "F" and "G".
2. Street name post shall be installed on road intersections as shown in Annex "H".
3. All information on the street name shall be in white lettering on blue background.
4. Street name post shall be painted with reflectorized blue color.
5. On intersection with traffic light, street name shall be installed on traffic light post.
6. In cities and other urban centers where there are already existing street name signs installed, the information "National Road" shall be added on the sign plate below the street name using sticker.

Funds to cover the expenditures related to this activity shall come from the activities programmed for implementation under the Annual Work Program for routine maintenance activities, i.e., Activities 209-Other Roadside Maintenance, 301-Sign Maintenance and 309-Other Traffic Services and/or other appropriate funds available for the purpose. Funds shall be programmed annually until such time that all national roads under the District's jurisdiction shall have been provided with the RROW markers, kilometer posts and street names. Further, said structures shall be maintained in the same manner that the carriageway and roadsides are maintained.

This Order supersedes D.O No. 90, s. 2015 and shall take effect immediately.

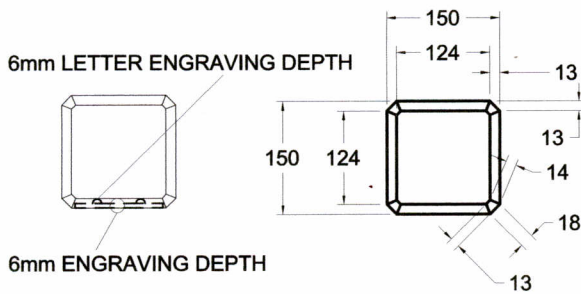

MARK A. VILLAR
Secretary

Department of Public Works and Highways
Office of the Secretary

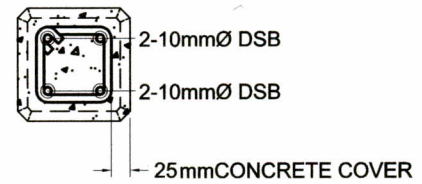


WIN9R01505

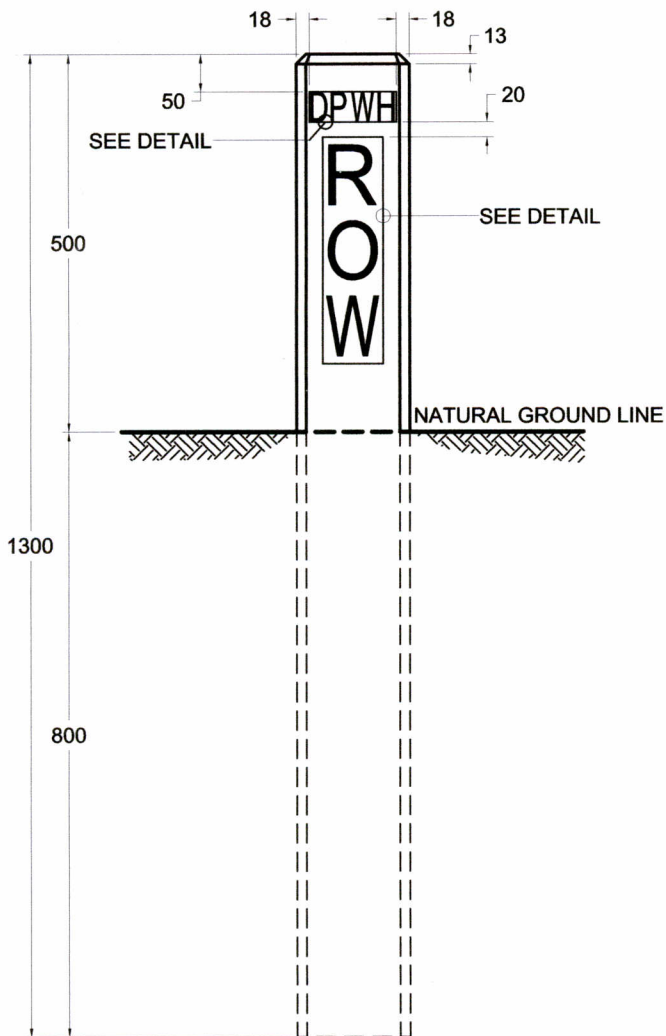
5.1.3 DLB/LND



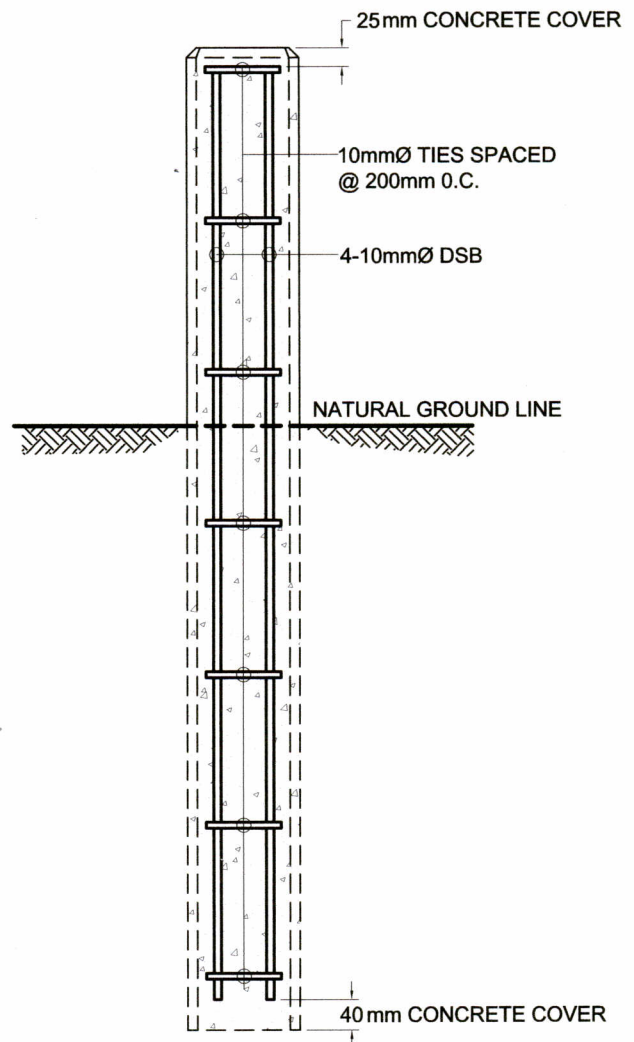
PLAN VIEW
SCALE 1:10



TYPICAL SECTION
SCALE 1:10



FRONT ELEVATION
SCALE 1:10



CROSS SECTION
SCALE 1:10

NOTE:

1. BLACK LETTERING ON YELLOW BACKGROUND
LETTER SIZES (SEE OTHER SHEETS)
2. ALL DIMENSIONS ARE IN MILLIMETERS

SPECIFICATIONS:

1. CONCRETE MIXTURE SHALL BE CLASS "C" (20,70Mpa)
2. STEEL REINFORCEMENT SHALL BE GRADE 40

PREPARED:

PAOLO CARLO M. SALVADOR
ENGINEER II, HIGHWAYS DIVISION, BOD

ROMEO C. RAAGAS
ENGINEER IV, HIGHWAYS DIVISION, BOD

REVIEWED:

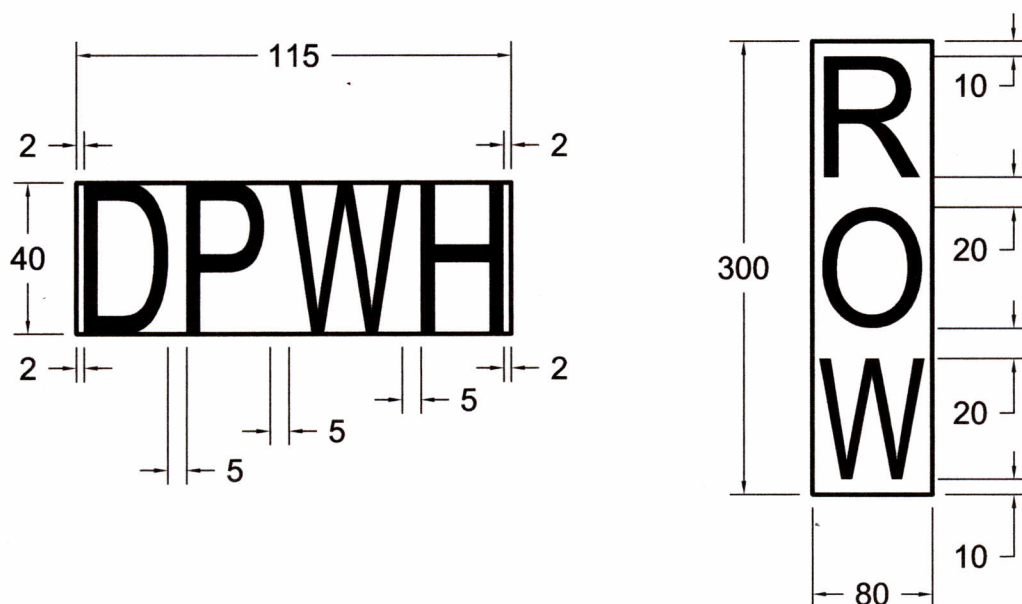
DANILO L. BALIS
CHIEF, HIGHWAYS DIVISION, BOD

SUBMITTED:

LEA N. DELFINADO, CESO IV
OFFICER-IN-CHARGE, BOD

APPROVED:

EMIL K. SADAIN, CESO I
UNDERSECRETARY FOR TECHNICAL
SERVICES AND UPMO OPERATIONS



 BLOW-UP DETAIL
SCALE 1:2






 BLOW-UP DETAIL
SCALE 1:5

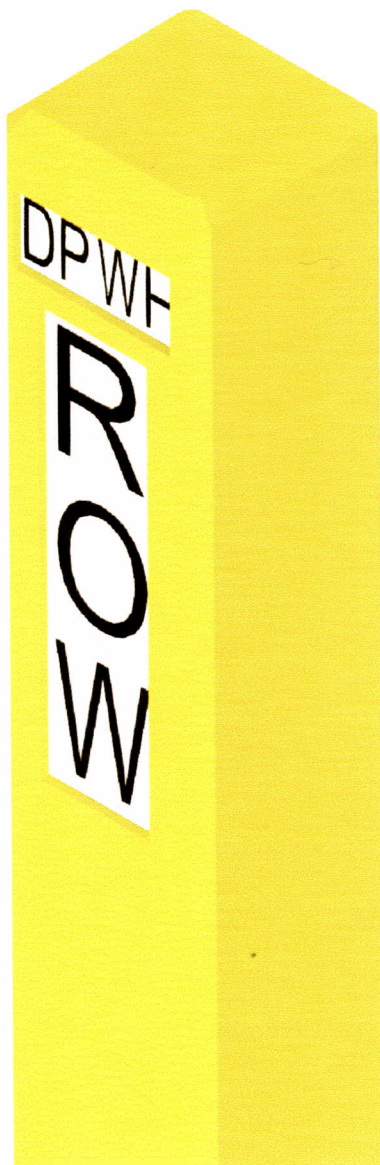
LETTER	WIDTH	HEIGHT	TYPE OF LETTER
D	22	40	Series "C"
P	22	40	Series "C"
W	30	40	Series "C"
H	30	40	Series "C"
R	64	80	Series "E"
O	66	80	Series "E"
W	70	80	Series "D"

 LETTER DETAILS
SCALE NTS

NOTE:

1. THE TYPE OF LETTER (SERIES) CAN BE FOUND IN THE MAY 2012 HIGHWAY SAFETY DESIGN STANDARDS, PART 2, ROAD SIGNS AND PAVEMENT MARKINGS MANUAL
2. ALL DIMENSIONS ARE IN MILLIMETERS

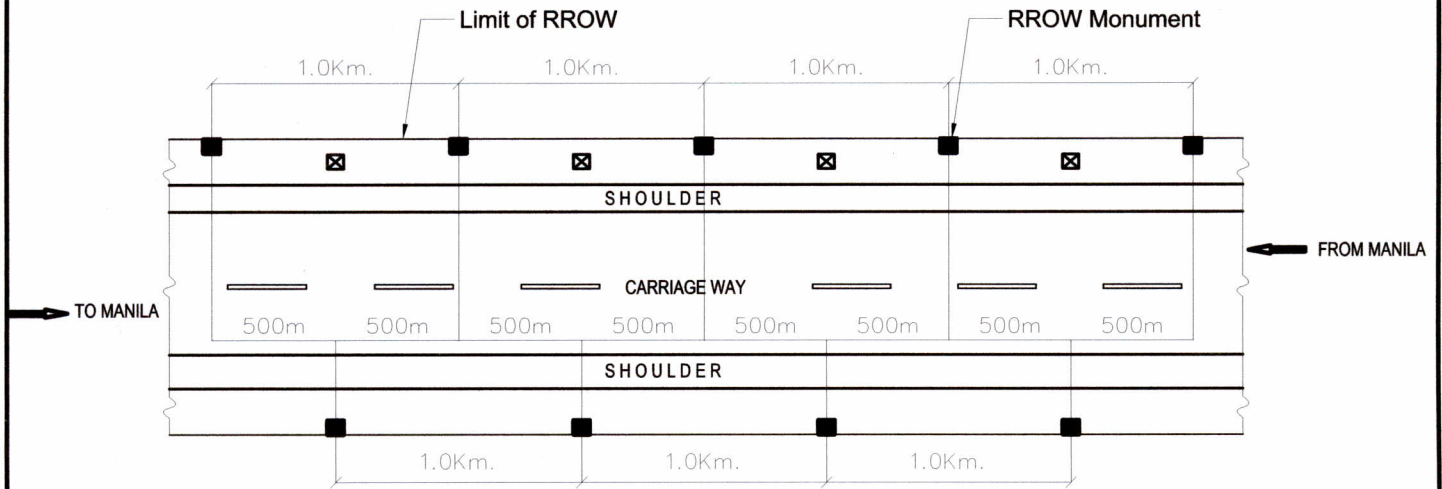
PREPARED:	REVIEWED:	SUBMITTED:	APPROVED:
 PAOLO CARLO M. SALVADOR ENGINEER II, HIGHWAYS DIVISION, BOD	 DANILO L. BALIS CHIEF, HIGHWAYS DIVISION, BOD	 LEA N. DELFINADO, CESO IV OFFICER-IN-CHARGE, BOD	 EMIL K. SADAIN, CESO I UNDERSECRETARY FOR TECHNICAL SERVICES AND UPMO OPERATIONS
 ROMEO C. RAAGAS ENGINEER IV, HIGHWAYS DIVISION, BOD			





NOTE:

1. THE TYPE OF LETTER (SERIES) CAN BE FOUND IN THE MAY 2012 HIGHWAY SAFETY DESIGN STANDARDS, PART 2, ROAD SIGNS AND PAVEMENT MARKINGS MANUAL
2. ALL DIMENSIONS ARE IN MILLIMETERS


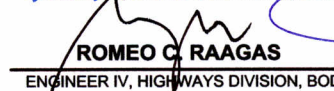
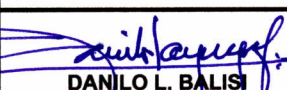
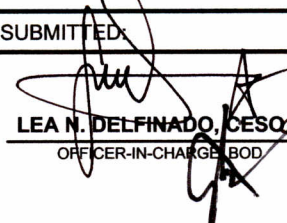
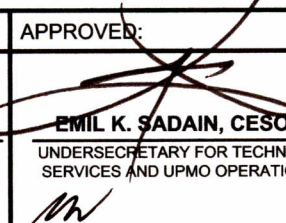
PREPARED:	REVIEWED:	SUBMITTED:	APPROVED:
PAOLO CARLO M. SALVADOR ENGINEER II, HIGHWAYS DIVISION, BOD ROMEO C. RAAGAS ENGINEER IV, HIGHWAYS DIVISION, BOD	 DANILO L. BALISI CHIEF, HIGHWAYS DIVISION, BOD	 LEA N. DELFINADO, CESO IV OFFICER-IN-CHARGE, BOD	 EMIL K. SADAIN, CESO I UNDERSECRETARY FOR TECHNICAL SERVICES AND UPMO OPERATIONS

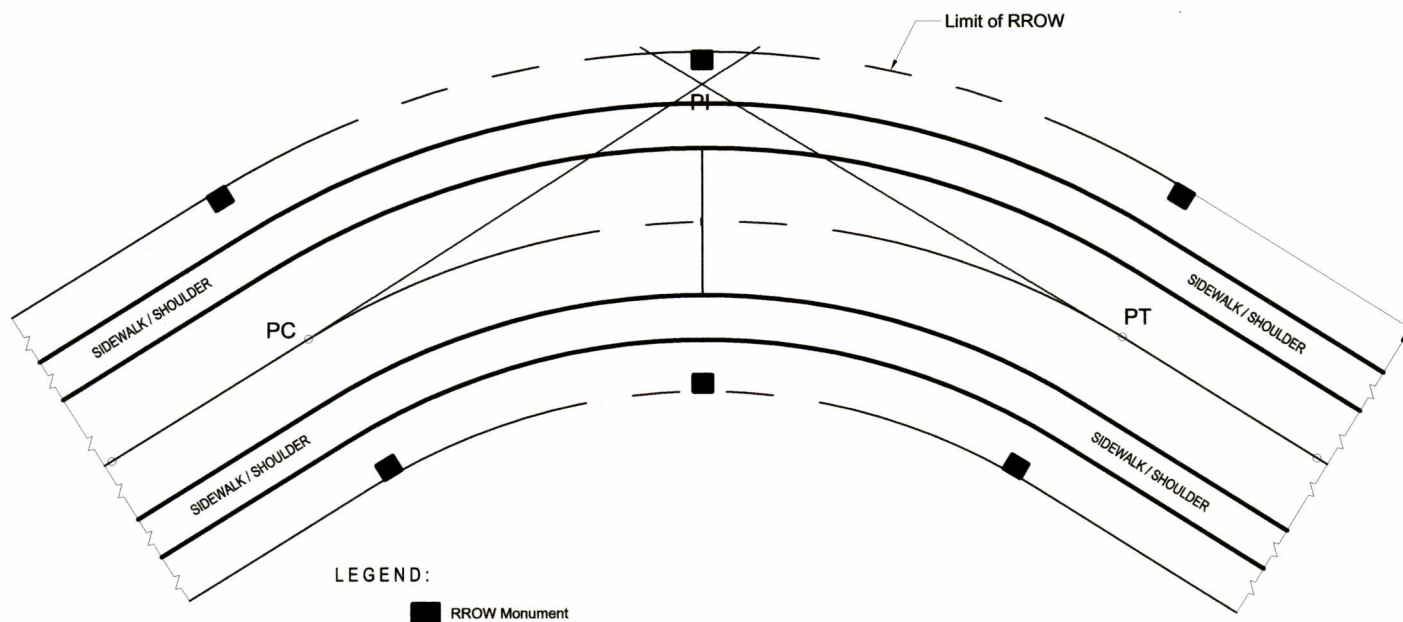


LEGEND:

-  RROW Monument
 KM Post

 ROW MARKER AND KILOMETER POST PLACEMENT

PREPARED:	REVIEWED:	SUBMITTED:	APPROVED:
PAOLO CARLO M. SALVADOR ENGINEER III, HIGHWAYS DIVISION, BOD  ROMEO C. RAAGAS ENGINEER IV, HIGHWAYS DIVISION, BOD 	 DANILO L. BALIS CHIEF, HIGHWAYS DIVISION, BOD	 LEA N. DELFINADO, CESO IV OFFICER-IN-CHARGE, BOD	 EMIL K. SADAIN, CESO I UNDERSECRETARY FOR TECHNICAL SERVICES AND UPMO OPERATIONS

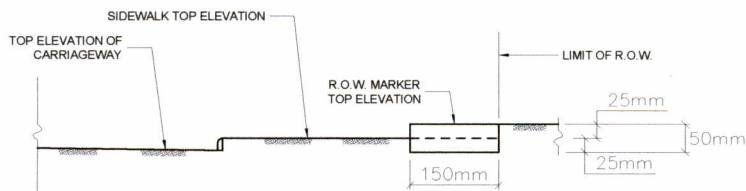
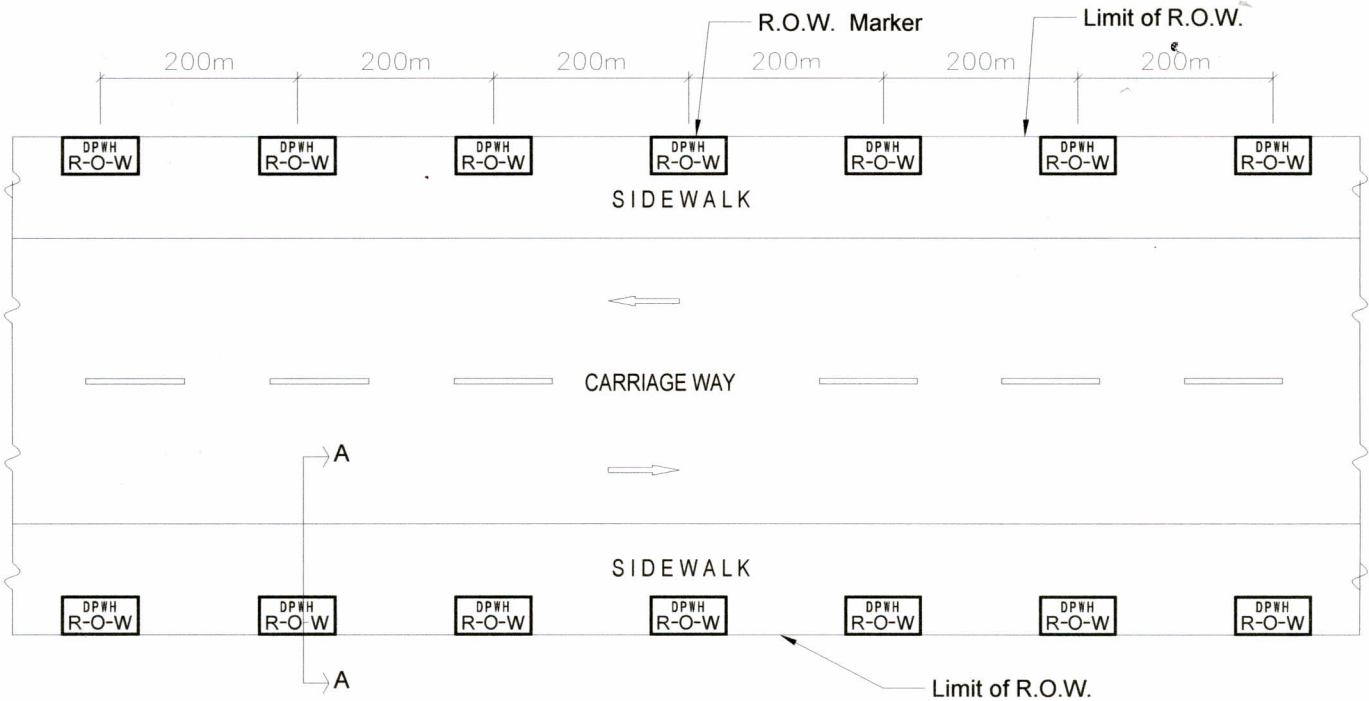


○ ROW MARKER PLACEMENT ALONG CURVE SECTION

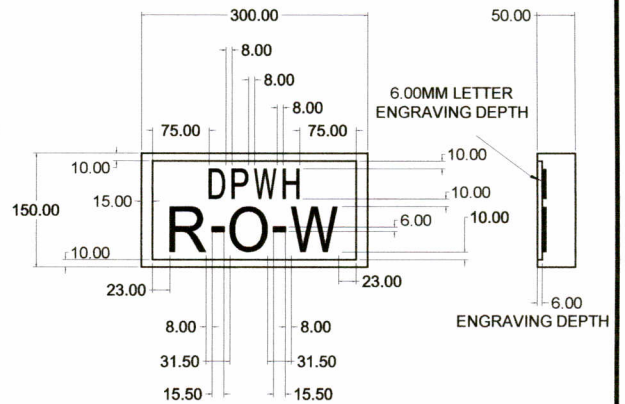
N T S

PREPARED:	REVIEWED:	SUBMITTED:	APPROVED:
PAOLO CARLO M. SALVADOR ENGINEER II, HIGHWAYS DIVISION, BOD ROMEO C. RAAGAS ENGINEER IV, HIGHWAYS DIVISION, BOD	 DANILO L. BALIS CHIEF, HIGHWAYS DIVISION, BOD	 LEA N. DELFINADO, CESO IV OFFICER-IN-CHARGE, BOD	 EMIL K. SADAIN, CESO I UNDERSECRETARY FOR TECHNICAL SERVICES AND UPMO OPERATIONS

ANNEX "D"



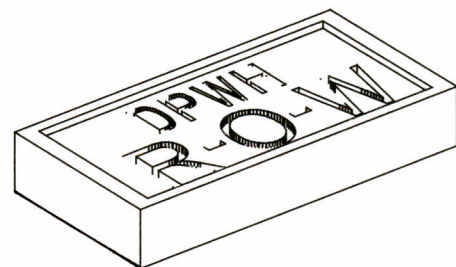
SECTION A - A



TYPICAL SECTION

LETTER	WIDTH	HEIGHT	TYPE OF LETTER
D	22	40	Series "C"
P	22	40	Series "C"
W	30	40	Series "C"
H	22	40	Series "C"
R	48	80	Series "E"
O	50	80	Series "E"
W	63	80	Series "E"

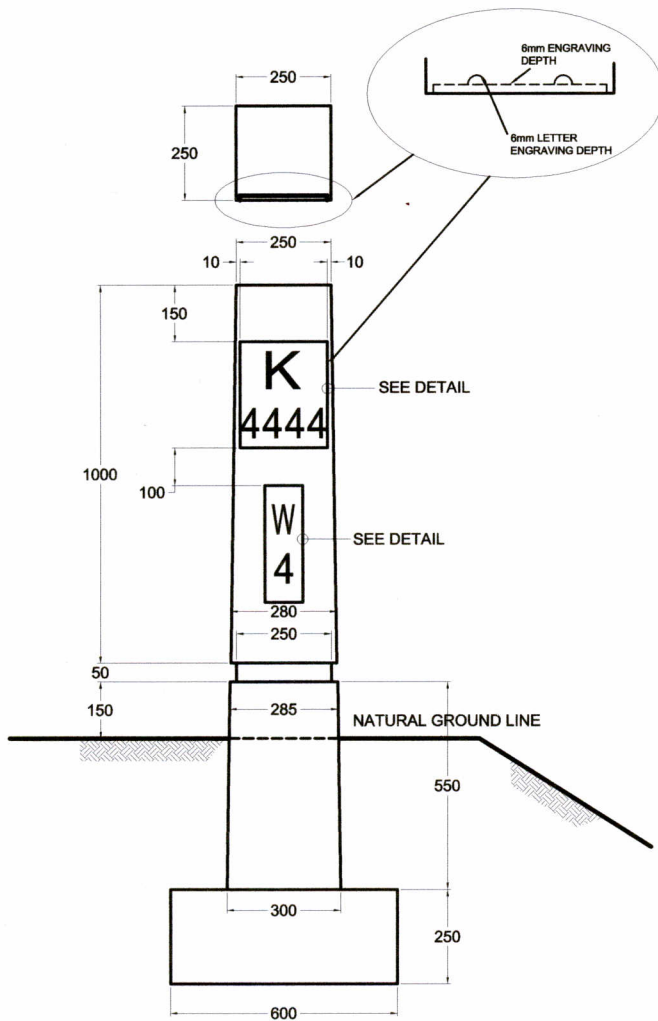
LETTER DETAILS



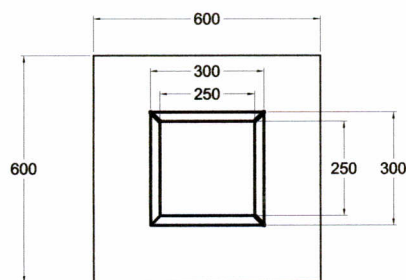
ISOMETRIC

ROW MARKER PLACEMENT ON HIGHLY URBANIZED AREA

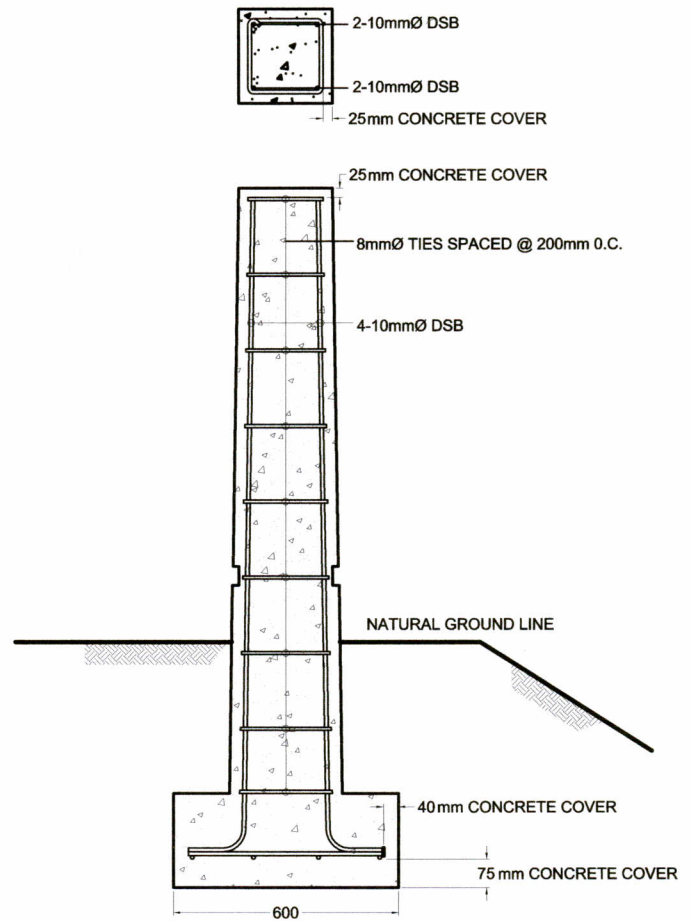
PREPARED:	REVIEWED:	SUBMITTED:	APPROVED:
PAOLO CARLO M. SALVADOR ENGINEER II, HIGHWAYS DIVISION, BOD ROMEO C. RAAGAS ENGINEER IV, HIGHWAYS DIVISION, BOD	 DANILO L. BALISI CHIEF, HIGHWAYS DIVISION, BOD	 LEA N. DELFINARO, CESO IV OFFICER-IN-CHARGE, BOD	 EMIL K. SADAIN, CESO I UNDERSECRETARY FOR TECHNICAL SERVICES AND UPMO OPERATIONS



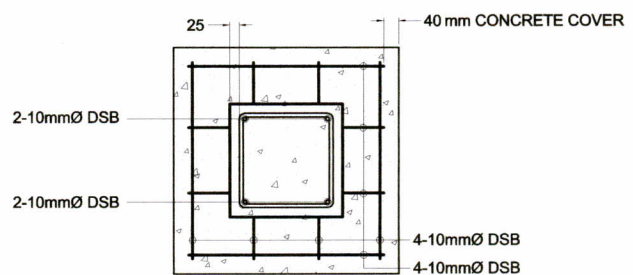
ELEVATION
SCALE 1:20



PLAN VIEW
SCALE 1:20



CROSS SECTION
SCALE 1:20



FOOTING PLAN
SCALE 1:20

NOTE:

1. BLACK LETTERING ON YELLOW BACKGROUND
LETTER SIZES (SEE OTHER SHEETS)
2. ALL DIMENSIONS ARE IN MILLIMETERS

SPECIFICATIONS:

1. CONCRETE MIXTURE SHALL BE CLASS "C" (28.70Mpa)
2. STEEL REINFORCEMENT SHALL BE GRADE 40

PREPARED:

PAOLO CARLO M. SALVADOR

ENGINEER IN CHARGE, DIVISION, BOD

ROMEO C. RAAGAS

ENGINEER IV, HIGHWAYS DIVISION, BOD

REVIEWED:

DANILO L. BALISI

CHIEF, HIGHWAYS DIVISION, BOD

SUBMITTED:

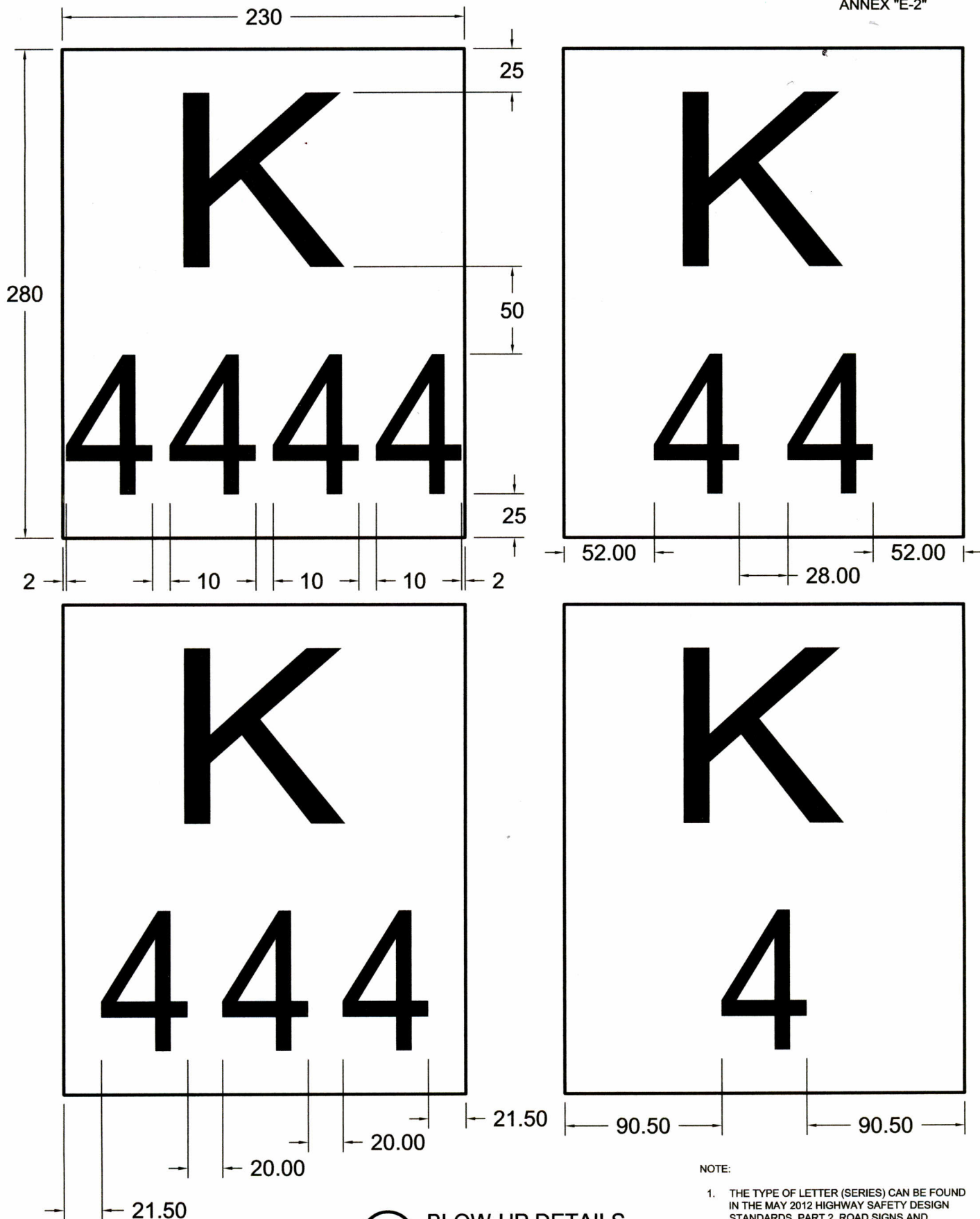
LEA N. DELFINADO, CESO IV

OFFICER-IN-CHARGE, BOD

APPROVED:

EMIL K. SADAIN, CESO I

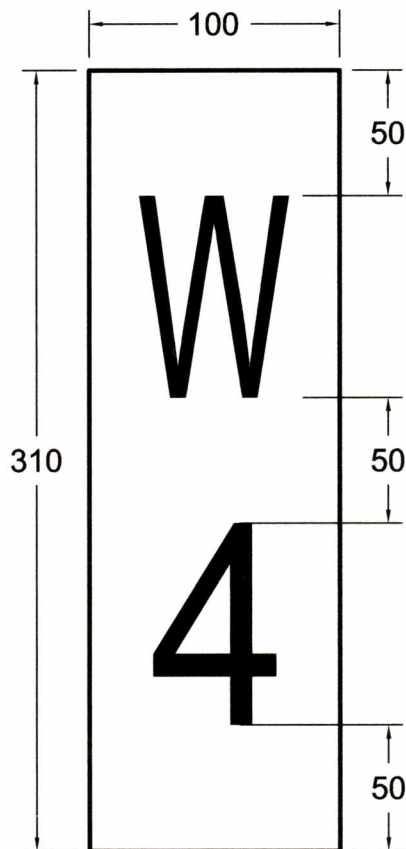
UNDERSECRETARY FOR TECHNICAL
SERVICES AND UPMO OPERATIONS



NOTE:

1. THE TYPE OF LETTER (SERIES) CAN BE FOUND IN THE MAY 2012 HIGHWAY SAFETY DESIGN STANDARDS, PART 2, ROAD SIGNS AND PAVEMENT MARKINGS MANUAL
2. ALL DIMENSIONS ARE IN MILLIMETERS

PREPARED:	REVIEWED:	SUBMITTED:	APPROVED:
PAOLO CARLO M. SALVADOR ENGINEER II, HIGHWAYS DIVISION, BOD ROMEO C. RAAGAS ENGINEER IV, HIGHWAYS DIVISION, BOD	 DANILO L. BALISI CHIEF, HIGHWAYS DIVISION, BOD	 LEA N. BELFINADO, CESO IV OFFICER-IN-CHARGE, BOD	 EMIL K. SADAIN, CESO I UNDERSECRETARY FOR TECHNICAL SERVICES AND UPMO OPERATIONS



BLOW-UP DETAILS

SCALE

1:3

LETTER / NUMBER	WIDTH	HEIGHT	TYPE OF LETTER
A to Z	60	80	Series "C"
K	92	100	Series "F"
1 to 10	49	80	Series "C"



LETTER DETAILS

SCALE

NTS

NOTE:

1. THE TYPE OF LETTER (SERIES) CAN BE FOUND IN THE MAY 2012 HIGHWAY SAFETY DESIGN STANDARDS, PART 2, ROAD SIGNS AND PAVEMENT MARKINGS MANUAL
2. ALL DIMENSIONS ARE IN MILLIMETERS

PREPARED:

PAOLO CARLO M. SALVADOR
ENGINEER II, HIGHWAYS DIVISION, BOD

ROMEO C. RAAGAS

ENGINEER IV, HIGHWAYS DIVISION, BOD

REVIEWED:

DANILO L. BALISI

CHIEF, HIGHWAYS DIVISION, BOD

SUBMITTED:

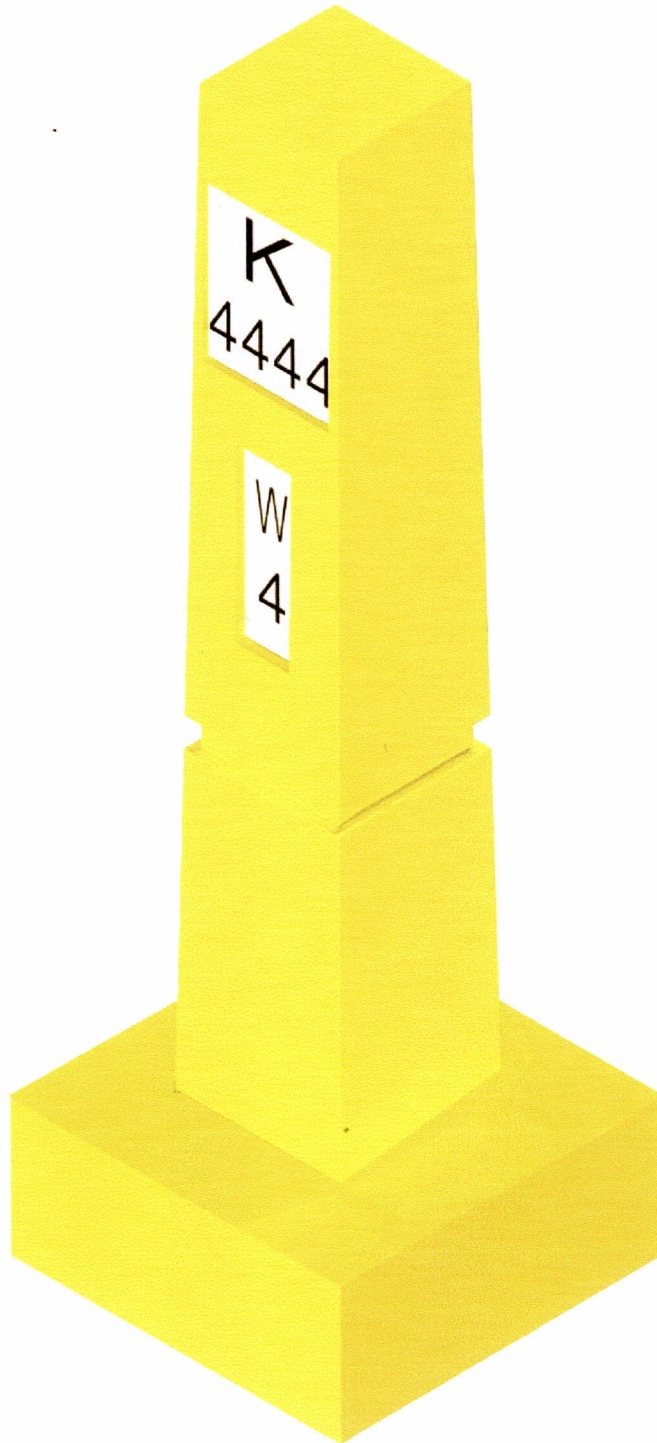
LEA N. DELFINADO, CESO IV

OFFICER-IN-CHARGE, BOD

APPROVED:

EMIL K. SADAIN, CESO I

UNDERSECRETARY FOR TECHNICAL
SERVICES AND UPMO OPERATIONS



NOTE:

1. THE TYPE OF LETTER (SERIES) CAN BE FOUND IN THE MAY 2012 HIGHWAY SAFETY DESIGN STANDARDS, PART 2, ROAD SIGNS AND PAVEMENT MARKINGS MANUAL
2. ALL DIMENSIONS ARE IN MILLIMETERS



ISOMETRIC

SCALE

NTS

PREPARED:

PAOLO CARLO M. SALVADOR
ENGINEER II, HIGHWAYS DIVISION, BOD

ROMEO C. RAAGAS

ENGINEER IV, HIGHWAYS DIVISION, BOD

REVIEWED:

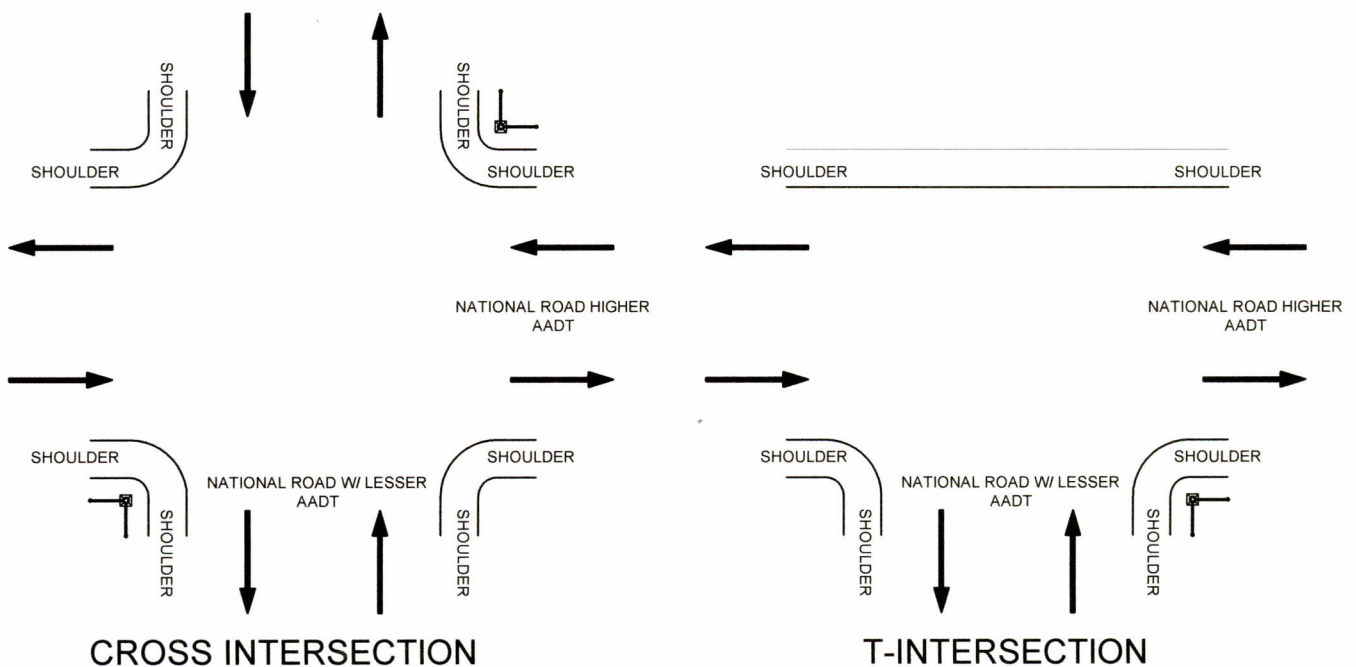
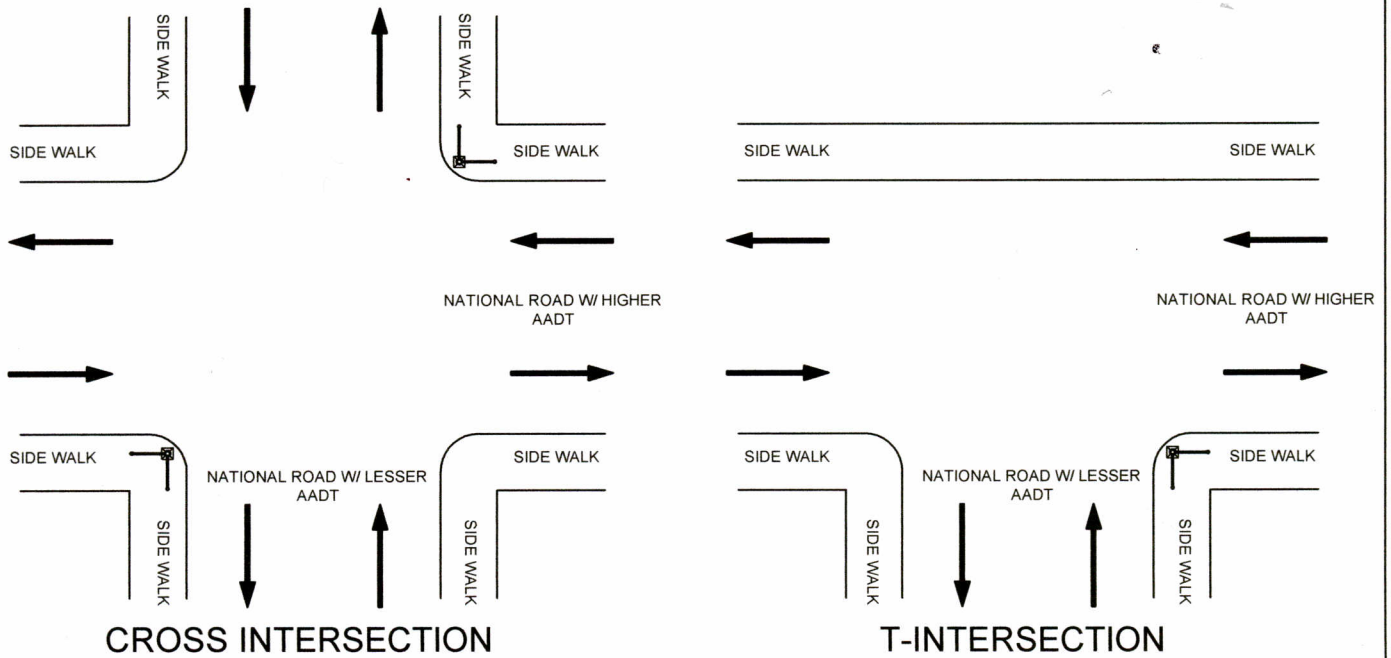
DANILO L. BALIST
CHIEF, HIGHWAYS DIVISION, BOD

SUBMITTED:

LEA N. DELFINADO, CESO IV
OFFICER-IN-CHARGE, BOD

APPROVED:

EMIL K. SADAIN, CESO I
UNDERSECRETARY FOR TECHNICAL
SERVICES AND UPMO OPERATIONS



NOTE:

(1) FOR CROSS TYPE OF INTERSECTION ON CURBED ROADS, STREET SIGNS SHOULD BE LOCATED AT THE CORNER BEFORE THE INTERSECTING NATIONAL ROAD WITH LESSER AADT, AS SHOWN IN THE PLAN.

(2) FOR "T" TYPE OF INTERSECTION ON CURBED ROADS, STREET SIGN SHOULD BE LOCATED AT THE CORNER AFTER THE INTERSECTING NATIONAL ROAD WITH LESSER AADT, AS SHOWN IN THE PLAN.

(3) FOR CROSS TYPE OF INTERSECTION ON UNCURBED ROADS, STREET SIGNS SHOULD BE LOCATED AT THE CORNER BEFORE THE INTERSECTING NATIONAL ROAD WITH LESSER AADT, AS SHOWN IN THE PLAN.

(4) FOR "T" TYPE OF INTERSECTION ON CURBED ROADS, STREET SIGN SHOULD BE LOCATED AT THE CORNER AFTER THE INTERSECTING NATIONAL ROAD WITH LESSER AADT, AS SHOWN IN THE PLAN.

PREPARED:

PAOLO CARLO M. SALVADOR
ENGINEER II, HIGHWAYS DIVISION, BOD

ROMEO C. RAAGAS
ENGINEER IV, HIGHWAYS DIVISION, BOD

REVIEWED:

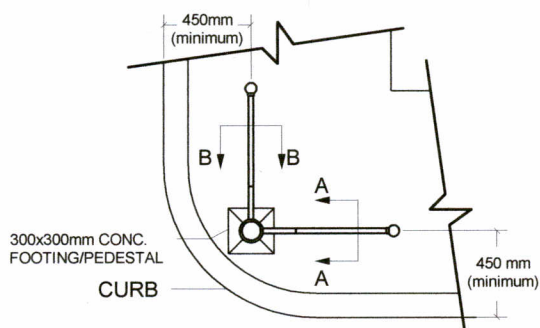
DANILO L. BALIS
CHIEF, HIGHWAYS DIVISION, BOD

SUBMITTED:

LEA N. DELFINADO, CESO IV
OFFICER-IN-CHARGE, BOD

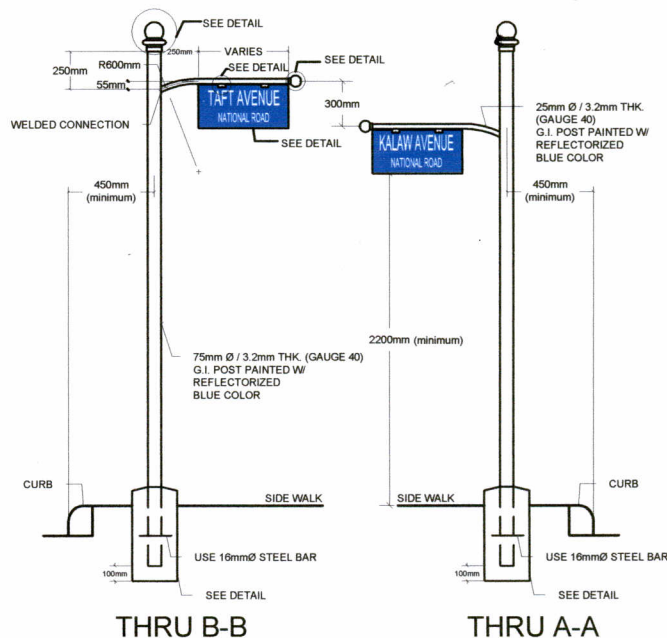
APPROVED:

EMIL K. SADAIN, CESO I
UNDERSECRETARY FOR TECHNICAL SERVICES AND UPMO OPERATIONS



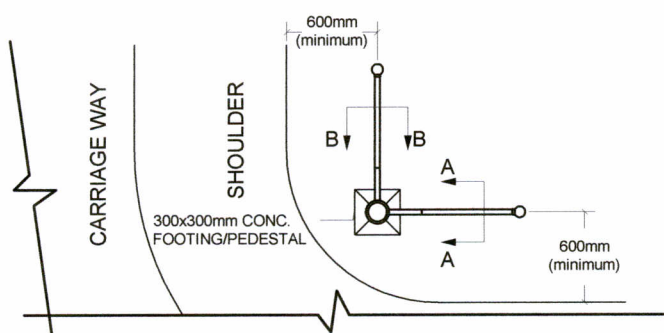
PLAN FOR CURBED ROADS

N T S



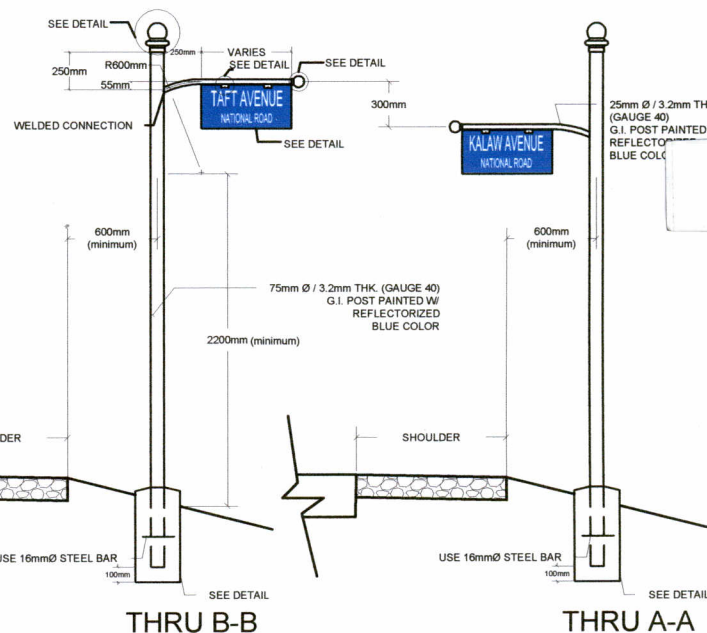
ELEVATION FOR CURBED ROADS

N T S



PLAN FOR UNCURBED ROADS

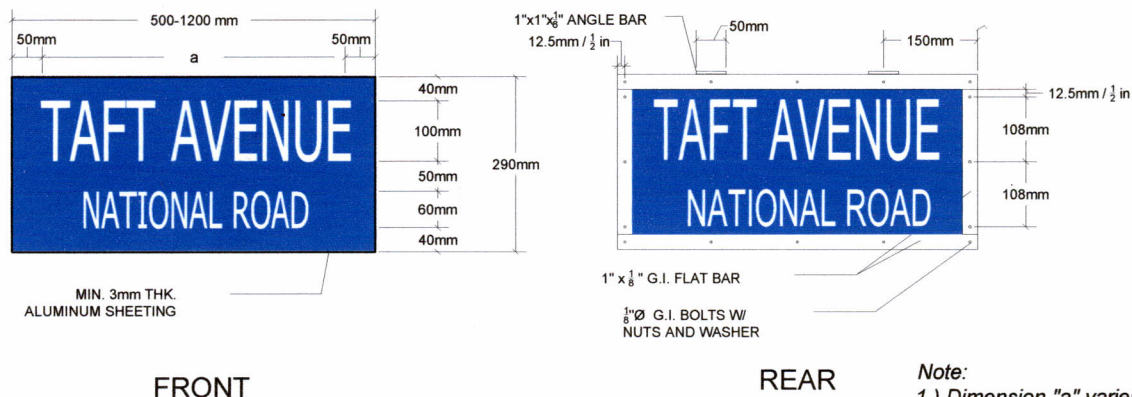
N T S



ELEVATION FOR UNCURBED ROADS

N T S

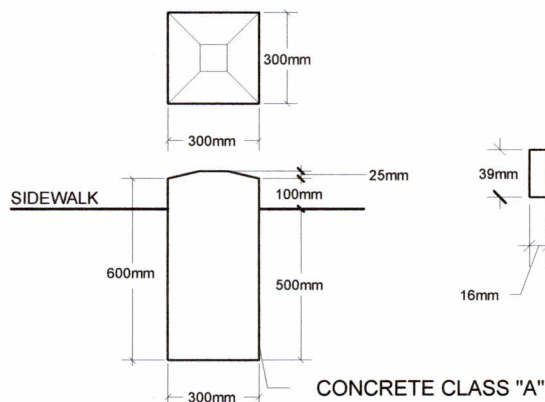
PREPARED:	REVIEWED:	SUBMITTED:	APPROVED:
 PAOLO CARLO M. SALVADOR ENGINEER II, HIGHWAYS DIVISION, BOD	 DANILO L. BALIS CHIEF, HIGHWAYS DIVISION, BOD	 LEA N. DELFINADO, CESO IV OFFICER-IN-CHARGE, BOD	 EMIL K. SADAIN, CESO I UNDERSECRETARY FOR TECHNICAL SERVICES AND UPMO OPERATIONS
 ROMEO C. RAAGAS ENGINEER IV, HIGHWAYS DIVISION, BOD			



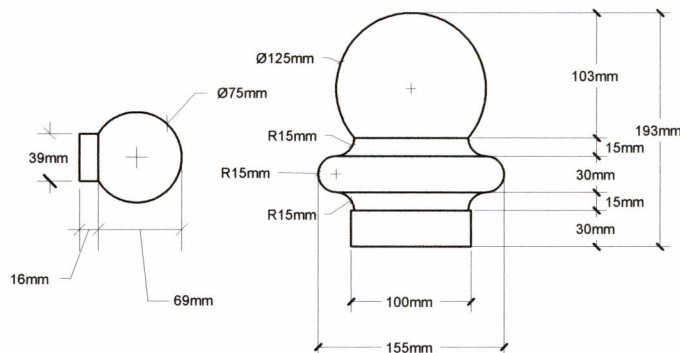
SIGN PANEL DETAIL
SCALE 1:10

Note:

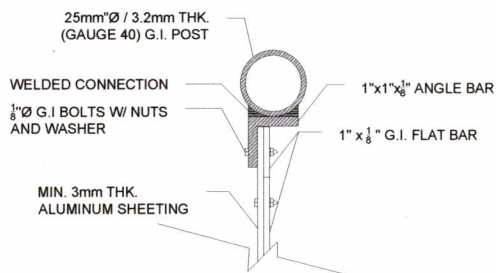
- 1.) Dimension "a" varies from 500mm-1100mm according to the road names.
- 2.) White retro-reflective letters on blue background.



CONC. FOOTING/PEDESTAL DETAIL
SCALE 1:5



PRE-FORMED G.I. STEEL DETAIL
SCALE 1:5



CONNECTION DETAIL
SCALE 1:3

PREPARED:	REVIEWED:	SUBMITTED:	APPROVED:
PAOLO CARLO M. SALVADOR ENGINEER II, HIGHWAYS DIVISION, BOD ROMEO C. RAAGAS ENGINEER IV, HIGHWAYS DIVISION, BOD	DANILO L. BALISI CHIEF, HIGHWAYS DIVISION, BOD	LEA N. DELFINADO, CESO IV OFFICER-IN-CHARGE, BOD	EMIL K. SADAIN, CESO I UNSERSECRETARY FOR TECHNICAL SERVICES AND JPMO OPERATIONS